

# CALL FOR ART HAMILTON PARK PART B PROPOSALS



825 W Monterey Ave  
Pomona, CA

## Prepared For:

City of Pomona

Cultural Arts Commission

Jocelyn Ayala

505 S. Garey Avenue,

Pomona, CA 91766

Due: December 2, 2024

From :

**ANGEL  
BARRIENTOS**

Raised in Pomona, CA

---

# ANGEL BARRIENTOS

Artist



---

December 2, 2024

City of Pomona  
Cultural Arts Commission  
Jocelyn Ayala  
505 S. Garey Avenue, Pomona, CA 91766

Re: Hamilton Park Call for Art I Part B: Proposals

Dear Selection Committee,

It is my pleasure to be selected to submit my proposal for the Hamilton Park Call for Art for the City of Pomona. I was raised in Pomona, where my sister and mother still live. I have always admired the vibrant community spirit and artistic enthusiasm that the Cultural Arts Commission embodies.

My proposal aims to capture these elements by creating pieces that not only reflects the park's natural beauty but also celebrates the diversity and creativity of its visitors. Through the use of bold colors and dynamic forms, I hope to create an engaging and interactive experience that invites everyone to connect with the art and with each other.

Ultimately, my goal is to create a space where art serves as a bridge, connecting people from all walks of life and sparking dialogues that celebrate our shared humanity. I am deeply committed to making this project a source of joy and inspiration for the entire Pomona community, and I am thrilled at the prospect of seeing our collective vision come to fruition in Hamilton Park.

***I want to be the artist of choice to continue seeing Hamilton Park beautified. I am open to review the budget and schedule to meet the City's goals.***

Thank you for considering my proposal, and I am eager to embark on this creative journey with you.

A handwritten signature in black ink, appearing to read 'Angel Barrientos'.

Angel Barrientos

---

---

# TABLE OF CONTENTS



Understanding of Part B: Proposal Request	1
<del>References</del> Removed by Staff.	<del>2-4</del>
Suitability for the Project, Site and Community	5
Suitability for the Community (Children's Art)	6-11
Artistic Merit/Rendering of the Project	12-29
Project Management - Approach	30
Project Management - Schedule	31-33
Project Management - Budget	34



# UNDERSTANDING

## of the Part B Proposal Request

The commission is particularly interested in pieces that reflect the diverse community and rich cultural history of Pomona. Artists are encouraged to consider themes that resonate with local traditions, stories, and the natural beauty of the area. Proposals should include a detailed description of the artwork, its intended impact, and how it will enhance the park's environment.

Artists are also invited to think creatively about materials and community, ensuring durability and sustainability. The proposal should include Artist Merit, sustainability for the project, a budget breakdown, and a timeline for completion. Public engagement and community collaboration are highly valued, and proposals that incorporate these elements will receive special consideration.

The Cultural Arts Commission is excited to see innovative and meaningful art that will inspire and engage residents and visitors alike, making Hamilton Park a vibrant place to make memories.

*Project completion is expected by the community on May 30, 2025.*



# SUITABILITY

## for the Project, Site and Community

### Suitability for the Project

Suitability for the Project is a crucial aspect to consider when planning any artistic endeavor. The art project should resonate with the cultural, historical, and social context of the site and the community it is engaging with. This means understanding the unique characteristics and needs of the community, as well as the site's physical and environmental attributes.



**Having grown up in Pomona and spent my childhood playing in the city's parks, I understand what the community desires to see in these spaces.**

A successful art project can foster community pride, engagement, and dialogue, while also enhancing the site's aesthetic and functional value. It is important to involve community members in the planning process, ensuring their voices are heard and their perspectives are reflected in the project's design and implementation.

Additionally, it should align with the park's values and mission, celebrating local culture and history or promoting sustainability and education. By meeting these criteria, the project can create a meaningful and lasting impact on both the park and its visitors.

### Suitability for the Site

**My distinctive artistic techniques, combined with children's art, will further the City's objective of making Hamilton Park an appealing destination for kids.**



### Hamilton Park in Progress

On August 31, 2023, the park was revitalized and opened to the community with a new first all-abilities playground, with vibrant colorful surfaces.

The park is evolving beyond its former identity, and I am eager to contribute to this transformation by infusing it with **COLOR** and joy through my art.



#### ***Safety is My Utmost Priority.***

As a seasoned local artist, I recognize the importance of securing the work areas, adhering to regular hours, and permitting the public to observe the process.

# SUITABILITY

## for the Project, Site and Community

### Suitability for the Community (and their ART)

By incorporating my art and engaging the community with the collaborative project, we can create a dynamic environment that reflects our collective spirit. I envision vibrant murals that celebrate the diversity and vitality of our community, turning blank walls into canvases bursting with life. Imagine pathways lined with colorful shapes that guide visitors on a journey of discovery, each step revealing a new story or theme.



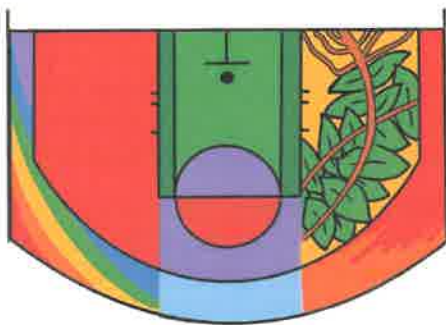
As I examined the children's artwork, I was reminded of my own beginnings in drawing, where I unleashed my imagination onto the page. Their creations inspired my Hamilton Art.

#### Sample of art or kids Art

#### Sample of art or kids Art



Art Inspired



#### Description of Design

The half-basketball court is a vibrant, community-inspired piece of art that celebrates the creativity and imagination of 5 local kid artists. Their original artworks—featuring rainbows, scribbles, flowers, and the sky—have been transformed into a cohesive design that not only beautifies the court but also serves as a meaningful representation of growth, joy, and hope.

#### Symbolism and Meaning:

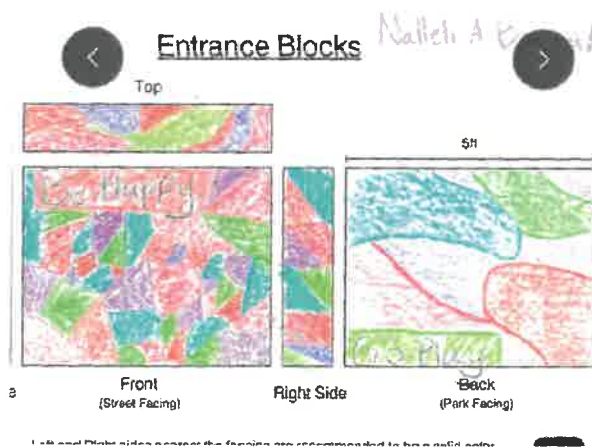
- Hope and Positivity: The rainbow and flowers are symbols of hope, growth, and the joy of working together as a community.
- Imagination and Creativity: The scribbles reflect the unrestrained creativity of children, inspiring everyone to embrace their individuality.
- Unity and Diversity: The combination of all the elements represents the diverse perspectives and talents of the kids who contributed, coming together harmoniously to form a single work of art.
- Nature and Community: By incorporating elements like flowers and the sky, the design emphasizes a connection to nature and the shared outdoor space where the court resides.

# SUITABILITY

## for the Project, Site and Community

### Sample of art or kids Art

#### Sample of art or kids Art



#### Description of Design

This design involves transforming two park entrance blocks into vibrant, mosaic-style artworks inspired by a child's submission. The child's original drawing, filled with colorful geometric patterns resembling a mosaic, serves as the foundation for this design. The mosaic-style artwork on the entrance blocks will create a welcoming and visually striking gateway to the park, symbolizing unity, creativity, and community connection.

#### Symbolism and Meaning:

##### 1. Unity and Community:

The mosaic pattern represents how individual pieces—like the people in the community—come together to create something larger and more meaningful. Each shape and color contributes to the overall design, emphasizing inclusivity and harmony.

##### 2. Creativity and Inspiration:

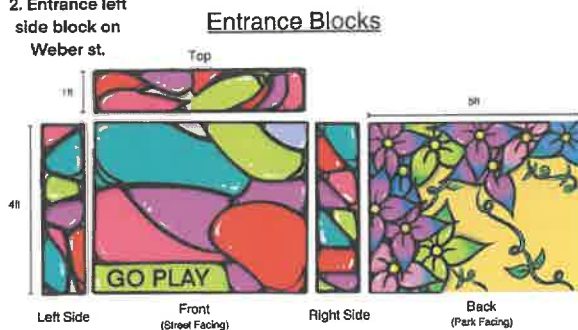
The geometric patterns and bold colors reflect the imaginative spirit of the child artist. They inspire visitors to view the park as a place for creativity and self-expression.

##### 3. Connection and Continuity:

The mosaic design ties the entrance blocks to the overall park experience, creating a sense of continuity between the gateway and the vibrant activities within the park.

#### Art Inspired

2. Entrance left side block on Weber st.



Left and Right sides nearest the fencing are recommended to be a solid color with minimal design.

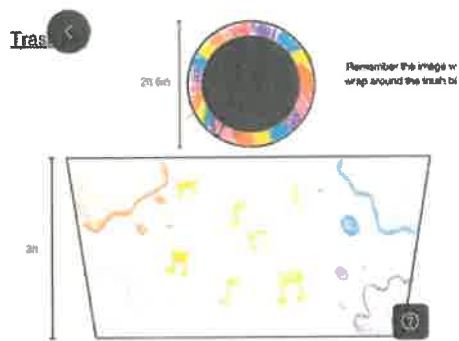


# SUITABILITY

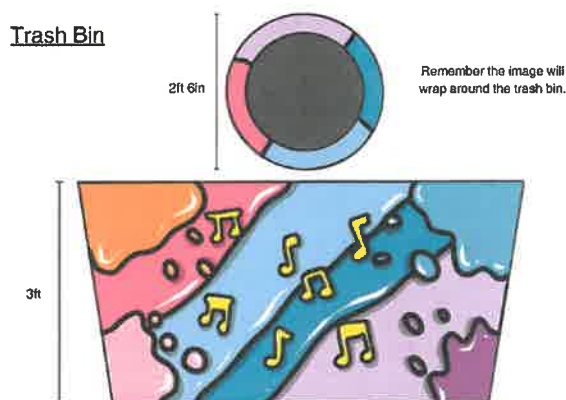
## for the Project, Site and Community

### Sample of art or kids Art

#### Sample of art or kids Art



#### Art Inspired



#### Description of Design

This trash bin design is a fusion of two children's creative artworks. One child's vibrant drawing featured four bold colors arranged in blocks, while the other child's design showcased whimsical music notes floating across a page. Combined, these elements create a lively and harmonious design that brings together color and rhythm, symbolizing creativity and community spirit. The trash bin serves as both a functional object and a work of art, making a vibrant statement while encouraging proper waste disposal.

#### Symbolism and Meaning:

##### 1. Creativity and Expression:

The combination of bold colors and musical elements symbolizes the boundless creativity of the children and the community. The design celebrates art and music as universal forms of self-expression.

##### 2. Unity Through Diversity:

By merging two distinct artistic visions into one cohesive design, the trash bin represents the power of collaboration and the beauty of blending different ideas into a shared creation.

##### 3. Harmony and Movement:

The flowing music notes crossing through the color blocks create a sense of connection and harmony, reminding viewers of the rhythm and vibrancy of life in the community.

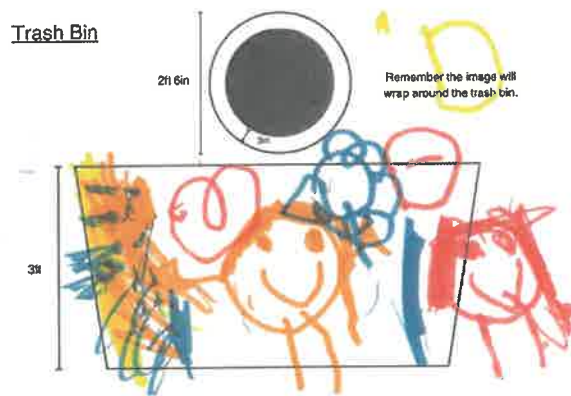


# SUITABILITY

## for the Project, Site and Community

### Sample of art or kids Art

#### Sample of art or kids Art



#### Art Inspired



#### Description of Design

This trash bin design is a heartfelt interpretation of a kindergartner's drawing that featured charming scribbled people and a large, vibrant heart. The design celebrates the innocence, love, and community spirit captured in the child's artwork. By bringing their whimsical vision to life, the trash bin becomes a playful and uplifting addition to the park, turning a functional object into a meaningful symbol of unity and kindness.

#### Symbolism and Meaning:

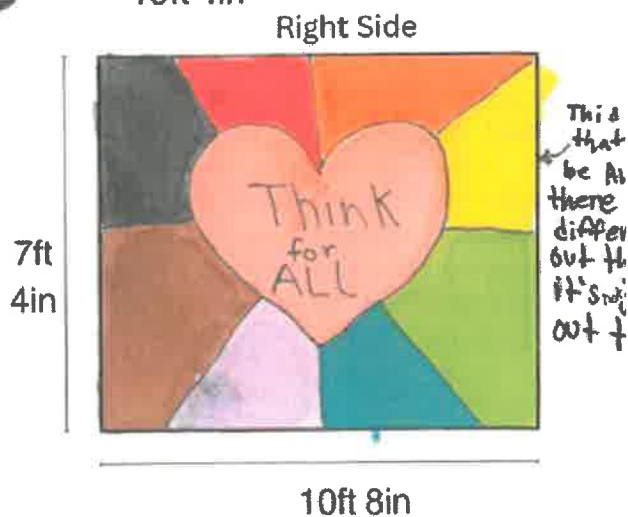
- 1. Love and Kindness:**  
The heart represents love and care for both the community and the environment, encouraging people to use the trash bin and help keep the park clean.
- 2. Childlike Joy and Creativity:**  
The whimsical style of the artwork reflects the unfiltered creativity of children and serves as a reminder of the simple joys of life.

# SUITABILITY

## for the Project, Site and Community

### Sample of art or kids Art

#### Sample of art or kids Art



#### Description of Design

This trash bin design is based on the vibrant and meaningful artwork of a single child artist. Their design features a large heart at the center, radiating colorful beams outward, with the powerful phrase "Think for All" written inside the heart. The artwork emphasizes compassion, inclusivity, and mindfulness, transforming the trash bin into a visual reminder to care for both the community and the environment.

#### Symbolism and Meaning:

- 1. Unity and Love:**  
The heart represents love and unity, serving as a central symbol of connection within the community.
- 2. Inspiration and Impact:**  
The radiating colors suggest the far-reaching effects of kindness and mindfulness, spreading positivity and inclusion throughout the park.
- 3. Mindfulness and Responsibility:**

The phrase "Think for All" encourages people to act thoughtfully, considering the well-being of the environment and those around them.

#### Art Inspired



# SUITABILITY

## for the Project, Site and Community

### • Sample of art or kids Art

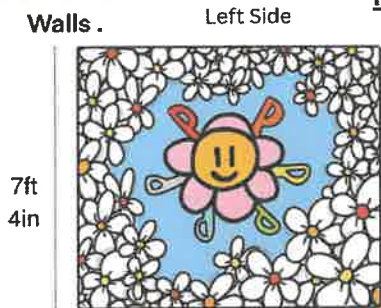
#### Sample of art or kids Art

#### Bathroom Walls



#### Art Inspired

#### L. Restroom Walls .



#### Description of Design

This bathroom wall design incorporates the creative vision of a child's drawing that features a cheerful flower at the center, surrounded by six bold "P" shapes representing the city of Pomona, California. The design is applied across two walls, creating a cohesive and uplifting space that celebrates community pride and youthful imagination. The artwork combines simplicity and vibrancy, transforming the bathroom into a welcoming and joyful environment.

#### Symbolism and Meaning:

- 1. Happiness and Growth:**  
The smiling flower represents joy, growth, and the flourishing spirit of the community.
- 2. Community Identity:**  
The six "P"s honor Pomona, California, serving as a nod to the city's vibrant character and the pride of its residents.



# ARTISTIC MERIT

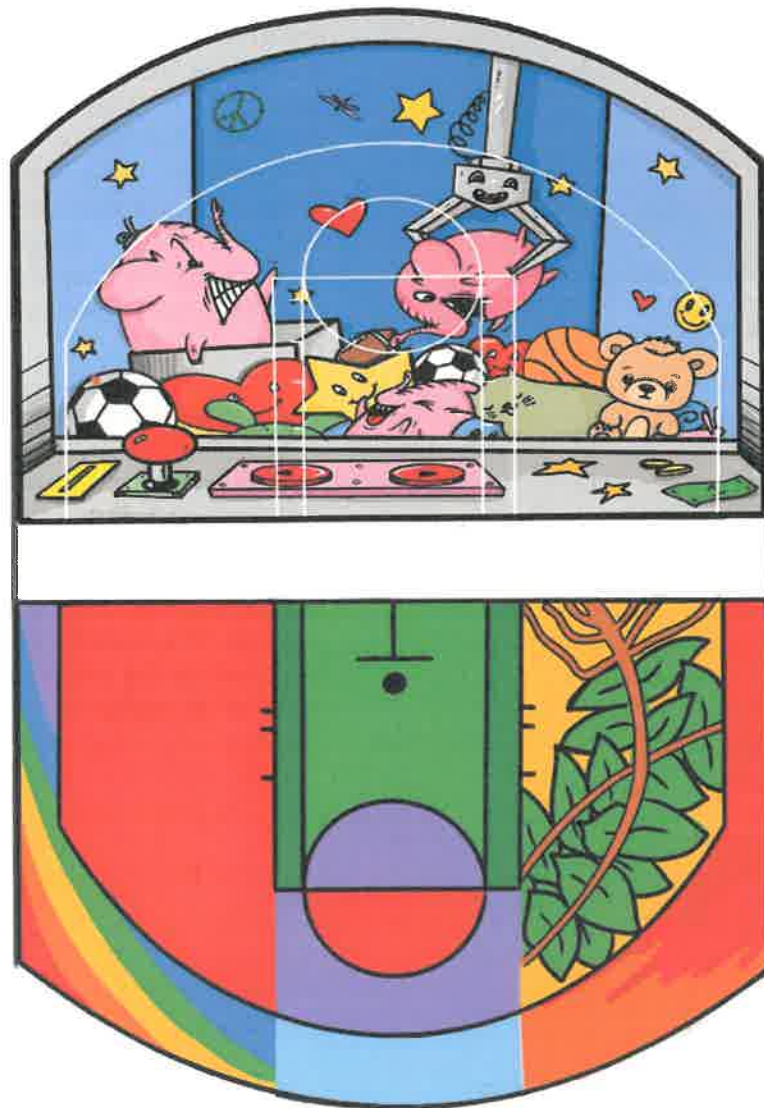
## Renderings for the Project

### BASKETBALL COURT

• Art by It self

The subcontractor  
Project Backboard.

Basketball Court





# ARTISTIC MERIT

## Renderings for the Project

### BASKETBALL COURT

The subcontractor  
Project Backboard.

#### Art on the Basketball Court

---



# ARTISTIC MERIT

## Renderings for the Project

### BASKETBALL COURT

The subcontractor  
Project Backboard.

#### Art on the Basketball Court



# ARTISTIC MERIT

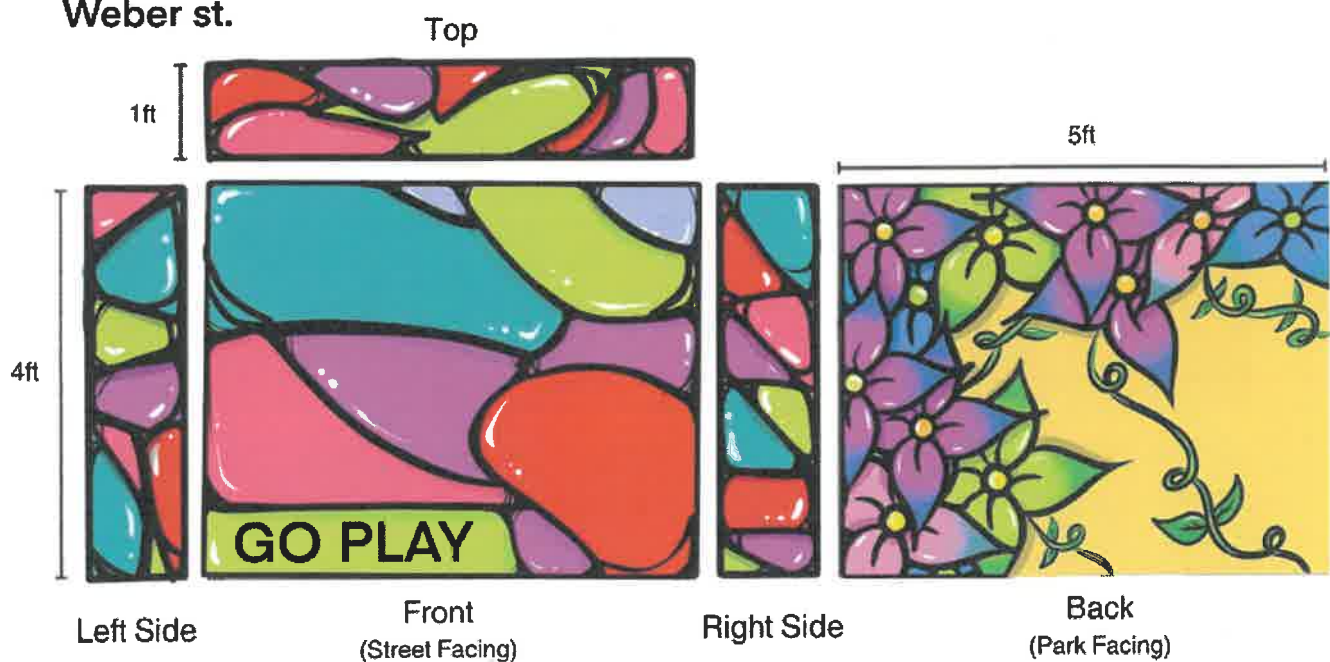
## Renderings for the Project

### ENTRANCE BLOCKS - WEBER STREET

• Art by It self Entrance Left Side Block

2. Entrance left side block on Weber st.

#### Entrance Blocks



Left and Right sides nearest the fencing are recommended to be a solid color with minimal design.



# ARTISTIC MERIT

## Renderings for the Project

### ENTRANCE BLOCKS - WEBER STREET

#### Art on the Entrance Block





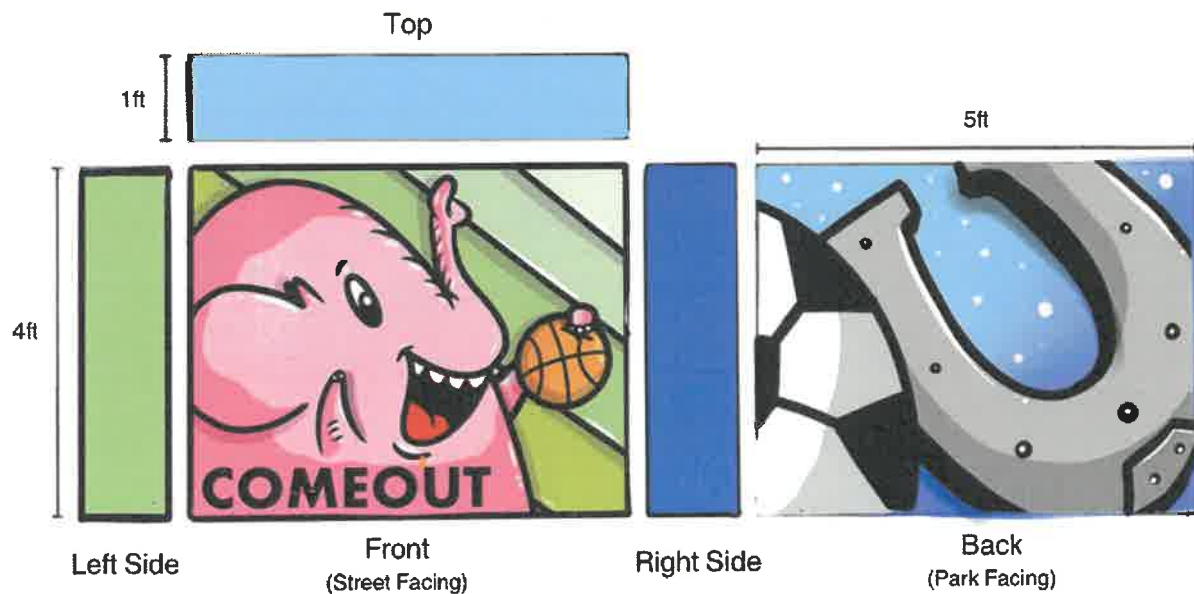
# ARTISTIC MERIT

## Renderings for the Project

### ENTRANCE BLOCKS - HAMILTON STREET

Art by It self

#### Entrance Blocks



Left and Right sides nearest the fencing are recommended to be a solid color with minimal design.

# ARTISTIC MERIT

## Renderings for the Project

### ENTRANCE BLOCKS - HAMILTON STREET

- Art on the Entrance Block



# ARTISTIC MERIT

## Renderings for the Project

### RESTROOM WALLS

Art by It self

#### 1. Restroom Walls .

#### Restroom Walls

Left Side

7ft  
4in



10ft 8in

Back

7ft  
4in



19ft 4in

Front

7ft  
4in



19ft 4in

Right Side

7ft  
4in



10ft 8in



# ARTISTIC MERIT

## Renderings for the Project

### RESTROOM WALLS

#### Art in the Restroom Walls





# ARTISTIC MERIT

## Renderings for the Project

### RESTROOM WALLS

#### Art in the Restroom Walls

---



# ARTISTIC MERIT

## Renderings for the Project

### RESTROOM WALLS

#### Art in the Restroom Walls

---





# ARTISTIC MERIT

## Renderings for the Project

### RESTROOM WALLS

#### Art in the Restroom Walls





# ARTISTIC MERIT

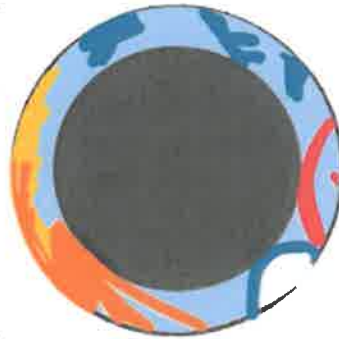
## Renderings for the Project

### TRASH BINS

• Art by It self

Trash Bin

2ft 6in



Remember the image will wrap around the trash bin.

1. Trash can #1

3ft



# ARTISTIC MERIT

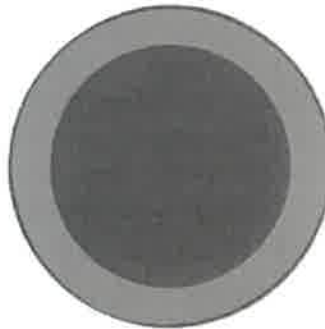
## Renderings for the Project

### TRASH BINS

• Art by It self

Trash Bin

2ft 6in



Remember the image will wrap around the trash bin.

3ft



# ARTISTIC MERIT

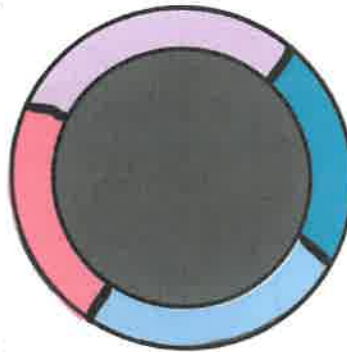
## Renderings for the Project

### TRASH BINS

Art by It self

Trash Bin

2ft 6in



Remember the image will wrap around the trash bin.

3ft





# ARTISTIC MERIT

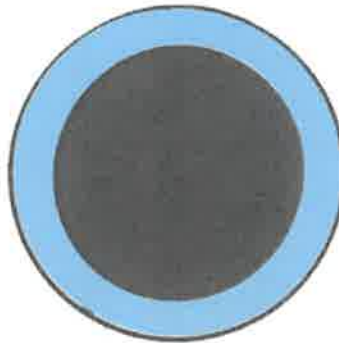
## Renderings for the Project

### TRASH BINS

• Art by It self

#### Trash Bin

2ft 6in



Remember the image will wrap around the trash bin.

#### 1. Trash can Bin #2

3ft



# ARTISTIC MERIT

## Renderings for the Project

### TRASH BINS

#### Art on the Trash Bins





# ARTISTIC MERIT

## Renderings for the Project

### TRASH BINS

#### Art on the Trash Bins







# PROJECT MANAGEMENT

## Schedule

**Schedule Overview: Page 33.**

The start month is based on an assumption. The timeline can be modified to align with the actual start dates.

### Detailed Timeline

#### Phase 1: Procurement and Setup | Timeline: February 1–15, 2025

Goals: Secure all necessary materials, finalize site preparations, and set up the workspace for production.

##### Key Tasks:

1. February 1–5:
  - Procure and purchase all materials and supplies.
  - Finalize contracts with vendors or subcontractors.
2. February 6–10:
  - Prepare workspaces (e.g., organize tools, set up equipment, and allocate storage).
  - Conduct team briefing to align tasks, timelines, and safety protocols.
3. February 11–15:
  - Confirm site readiness (if applicable) with a walk-through and address any logistical concerns.
  - Secure transportation arrangements for materials and delivery.

**Deadline:** Workspace, materials, and transportation must be ready by February 15.

#### Phase 2: Production and Fabrication | Timeline: February 16–April 15, 2025

Goals: Complete the creation of all artwork components and prepare for installation.

##### Key Tasks:

1. February 16–28:
  - Begin initial production tasks (e.g., outlining, trash bins, restroom walls, entrance blocks, etc.)
  - Conduct quality paint tests to ensure components meet design specifications.
2. March 1–31:
  - Complete primary tasks, focusing on major structures or central elements (e.g., basketball court subcontractor coordination).
  - Begin preliminary finishes such as sanding, painting, or detailing on trash bins, restroom walls, entrance blocks, and restroom doors.
  - Hold bi-weekly progress reviews to adjust schedules as needed.
3. April 1–15:
  - Finalize intricate or detailed elements on the restroom walls, doors, entrance blocks and status of a basketball court with the subcontractor.
  - Perform quality checks on all components.
  - Make adjustments as needed.

# PROJECT MANAGEMENT

## Schedule

### Detailed Timeline

#### Phase 3: Installation Preparation and Execution | Timeline: April 16–May 15, 2025

Goals: Completed the artwork at the installation site.

##### Key Tasks:

##### 1. April 16–20:

- Continue to make adjustments per the initial quality check and completed artwork on the site. Restroom walls, doors, entrance blocks, trash bins, and basketball court with the subcontractor.
- Inspect to confirm site readiness.

##### 2. April 21–30:

- Conduct another quality check on all the artwork components. Restroom walls, doors, entrance blocks, trash bins, and basketball court with the subcontractor.
- Hold bi-weekly progress reviews to adjust schedules as needed.

##### 3. May 1–10:

- Add finishing touches, including minor adjustments.
- Begin preparing signage or plaques (if applicable).

##### 4. May 11–15:

- Perform a final walkthrough and resolve any identified issues.
- Ensure all necessary documentation and approvals are obtained.

**Deadline: Installation must be complete by May 15.**

#### Phase 4: Finalization and Close-Out | Timeline: May 16–30, 2025

Goals: Officially conclude the project, deliver reports, and host final presentations.

##### Key Tasks:

##### 1. May 16–22:

- Photograph the completed installation for documentation.
- Finalize and install signage or plaques.

##### 2. May 23–29:

- Prepare and submit the final report, including final invoice.
- Conduct a final meeting or presentation with the City.

##### 3. May 30:

- Host unveiling or project presentation (if applicable).
- Archive all project files for future reference.

**Deadline: All activities must be completed by May 30.**



# PROJECT MANAGEMENT

## Schedule

### Schedule Overview:

The start month is based on an assumption. The schedule can be modified to align with the actual start dates.

#### Timeline

##### PHASE 1

##### Procurement and Setup

**Timeline: February 1–15, 2025**

Deadline: Workspace, materials, and transportation must be ready by February 15.

##### PHASE 2

##### Production and Fabrication

**Timeline: February 15 - April 15, 2025**

Coordinate with SportMaster for basketball courts.

Deadline: All artwork components must be fabrication-ready by April 15.

##### PHASE 3

##### Installation Preparation and Execution

**Timeline: April 16–May 15, 2025**

Coordinate with SportMaster for basketball courts.

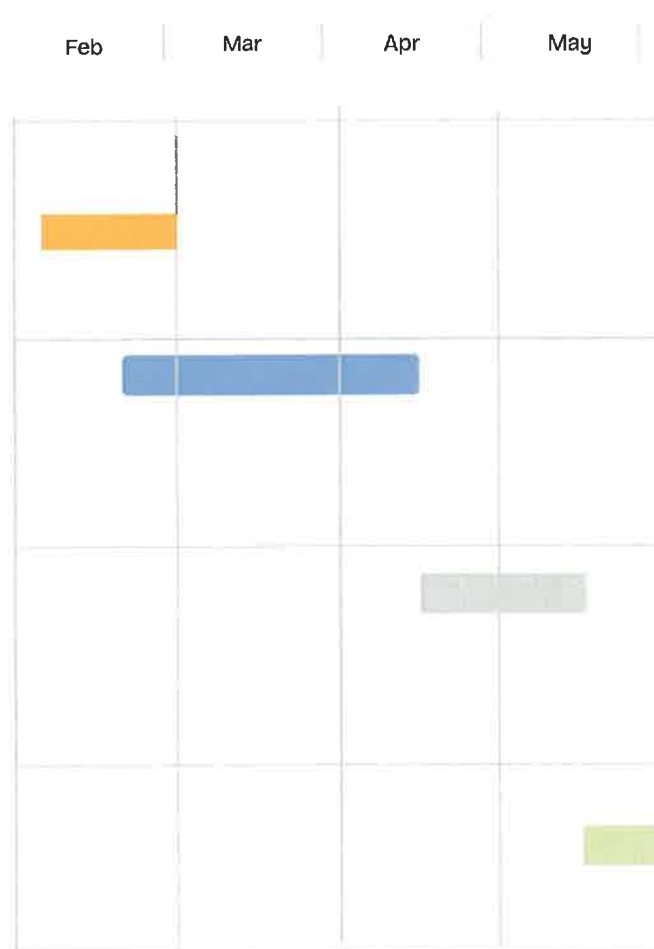
Deadline: Installation must be complete by May 15.

##### PHASE 4

##### Finalization and Close-Out

**Timeline: May 16–30, 2025**

Deadline:  
All activities must be completed by May 30.



# PROJECT MANAGEMENT

## Budget

**Line Item Percentage of Budget Amount Description** Funds can be reallocated within the line items.

LINE ITEM	% OF BUDGET	AMOUNT	DESCRIPTION
• Artist Fee	• 20%	• \$20,000	• Compensation for the primary artist overseeing the project.
• Project Assistant(s)	• 4.5%	• \$4,500	• Salaries or wages for assistants supporting the artist.
• Administrative Overhead	• 2%	• \$2,000	• Cannot exceed 22% of Project Assistant(s) amount
• Auto & Liability Insurance	• 2%	• \$2,000	• Insurance coverage for project duration.
• Travel Expenses	• 2%	• \$2,000	• Transportation costs for artist and assistant(s)
• Materials	• 15%	• \$15,000	• Supplies required for the artwork and project execution.
• Artwork Fabrication	• 13%	• \$13,000	• Costs for design and creating the main artwork.
• Storage	• 2%	• \$2,000	• Temporary storage costs for materials and completed artwork.
• Equipment	• 5%	• \$5,000	• Specialized tools or rentals required for fabrication or setup.
• Project Backboard, Subcontractor	• 18.5%	• \$18,500	• Labor and equipment for installing the artwork. • Subcontractor for basketball courts.
• Permit and Inspector Fees *	• 2%	• \$2,000	• Permits and inspector costs (if applicable).
• Site Preparation	• 1%	• \$1,000	• Preparing the location for installation.
• Signage and Plaque Fabrication *	• 2%	• \$2,000	• Design and installation of commemorative signage.
• Professional Photography	• 1%	• \$1,000	• High-quality photos for documentation and promotion.
• Contingency	• 10%	• \$10,000	• Reserve for unexpected expenses.

### BUDGET SUMMARY

• Total Project Budget:	• \$100,000.00
• Total Allocated Amount:	• \$100,000.00

\*Assumptions: Line items that are not utilized can be reallocated to another line item.



**THANK YOU**



