

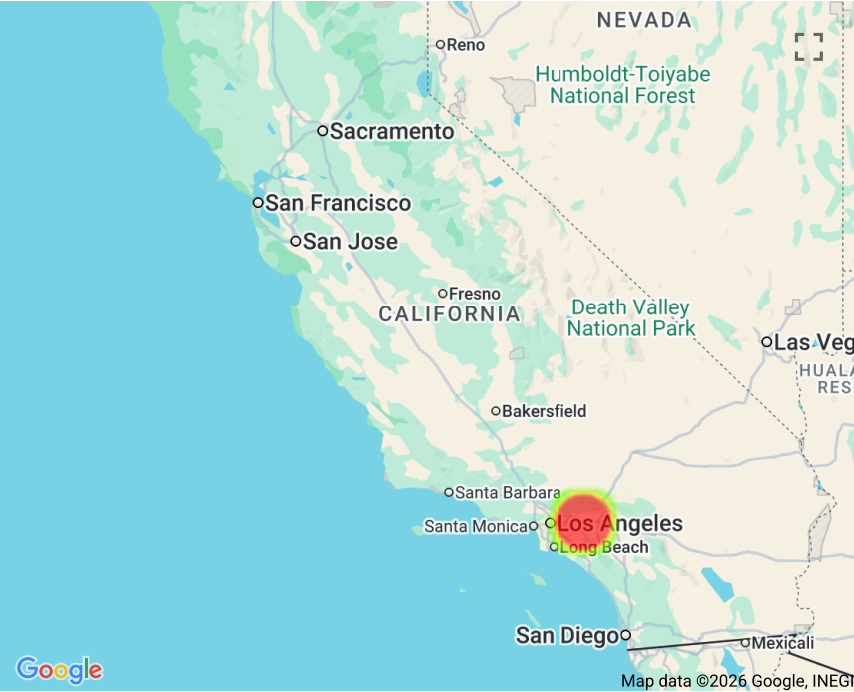
Overview

This report was created with the help of The Transportation Injury Mapping System (TIMS). TIMS has been developed by UC Berkeley SafeTREC to provide quick, easy and free access to California crash data, the Statewide Integrated Traffic Records System (SWITRS), that has been geo-coded by SafeTREC to make it easy to map crashes.

Date & Location	
Date:	01/01/2023 - 12/31/2025
County:	Los Angeles
City:	Pomona

Result

- Total Crashes**
2,890
- Total Victims**
36 Killed & 4,016 Injured
- State Highway**
1,055 (36.5%)
- Ped Involved**
190 (6.6%)
- Bike Involved**
142 (4.9%)
- Motorcycle Involved**
185 (6.4%)

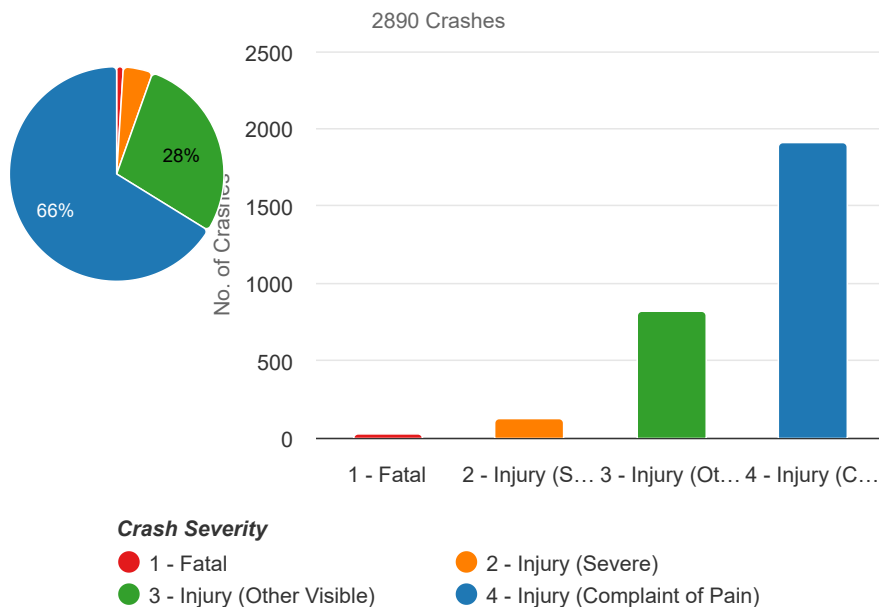


2,854 of 2,890 (98.8%) Crashes are geocoded and mapped.

Crash Summary

By Crash Severity

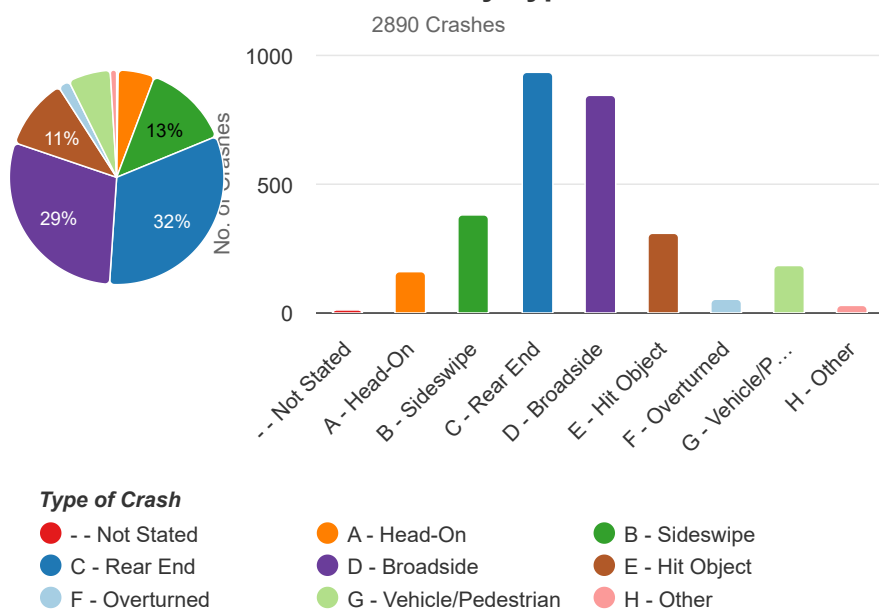
Number of Crashes by Crash Severity



Crash Severity	Count	%
1 - Fatal	29	1.00%
2 - Injury (Severe)	128	4.43%
3 - Injury (Other Visible)	820	28.37%
4 - Injury (Complaint of Pain)	1913	66.19%

By Crash Type

Number of Crashes by Type of Crash

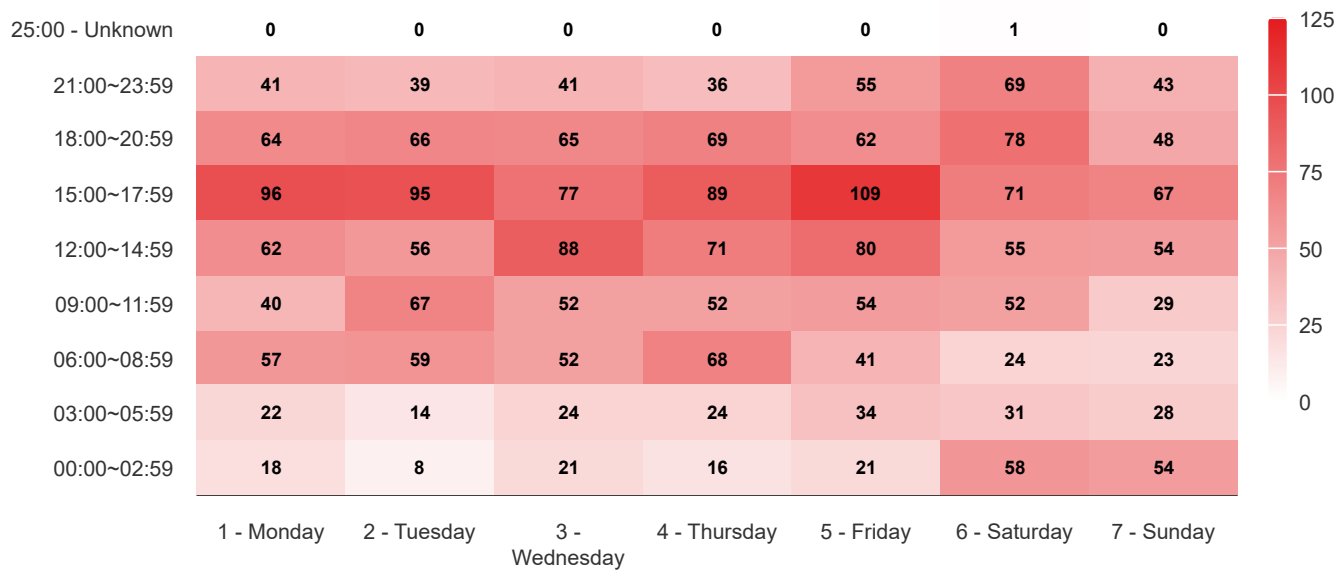


Type of Crash	Count	%
-- Not Stated	7	0.24%
A - Head-On	159	5.50%
B - Sideswipe	377	13.04%
C - Rear End	933	32.28%
D - Broadside	842	29.13%
E - Hit Object	309	10.69%
F - Overturned	51	1.76%
G - Vehicle/Pedestrian	184	6.37%
H - Other	28	0.97%

By Day of Week and Time

Number of Crashes per Day of Week per Time

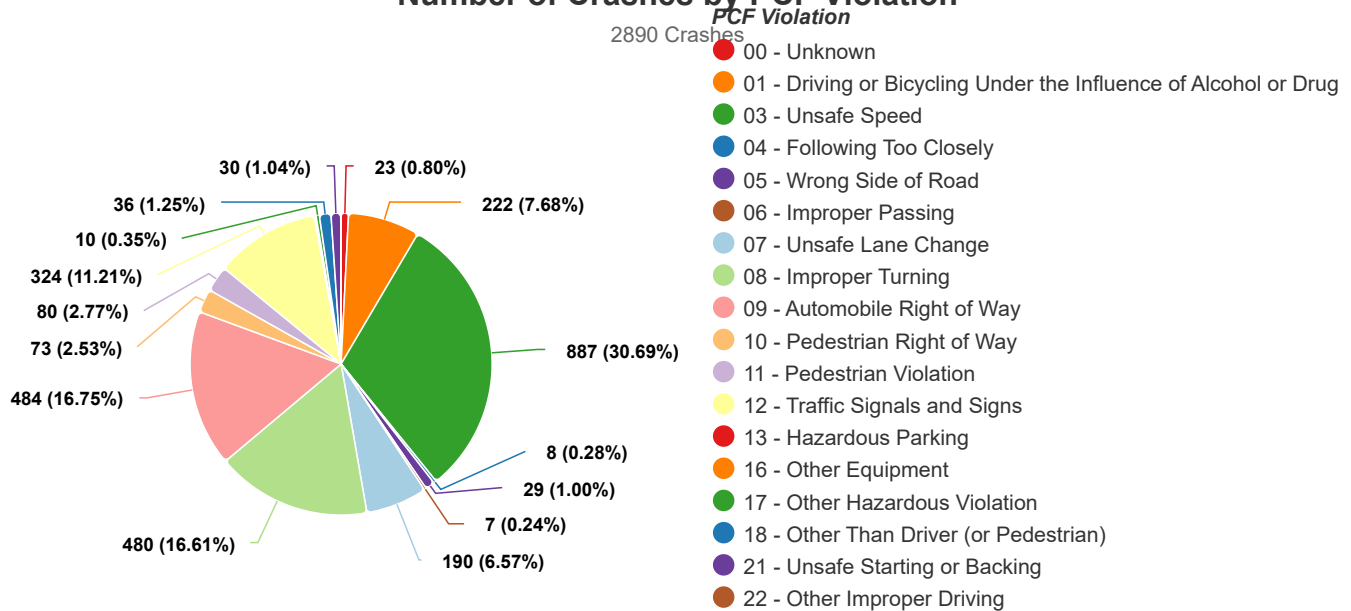
2890 Crashes



By Primary Crash Factor (PCF) Violation

Number of Crashes by PCF Violation

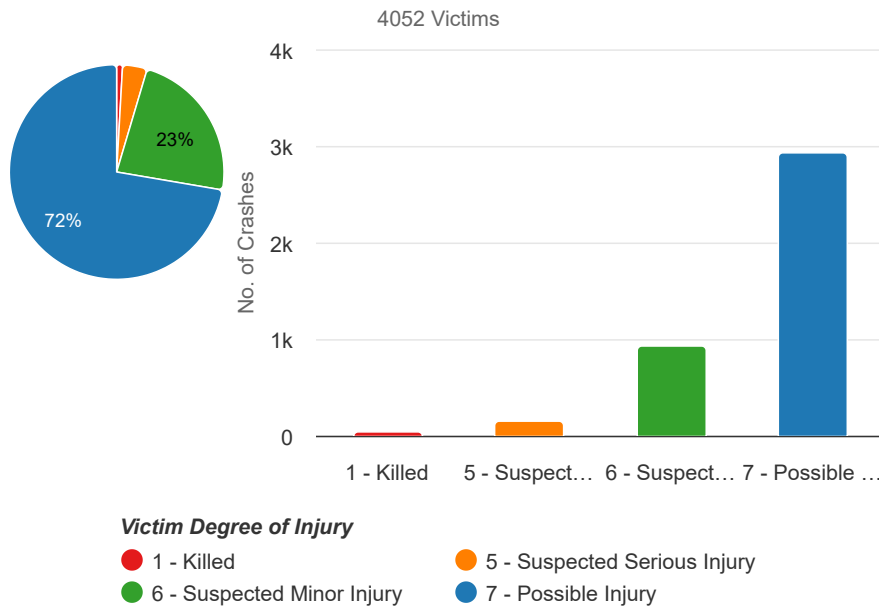
2890 Crashes



Victim Summary

By Victim Degree of Injury

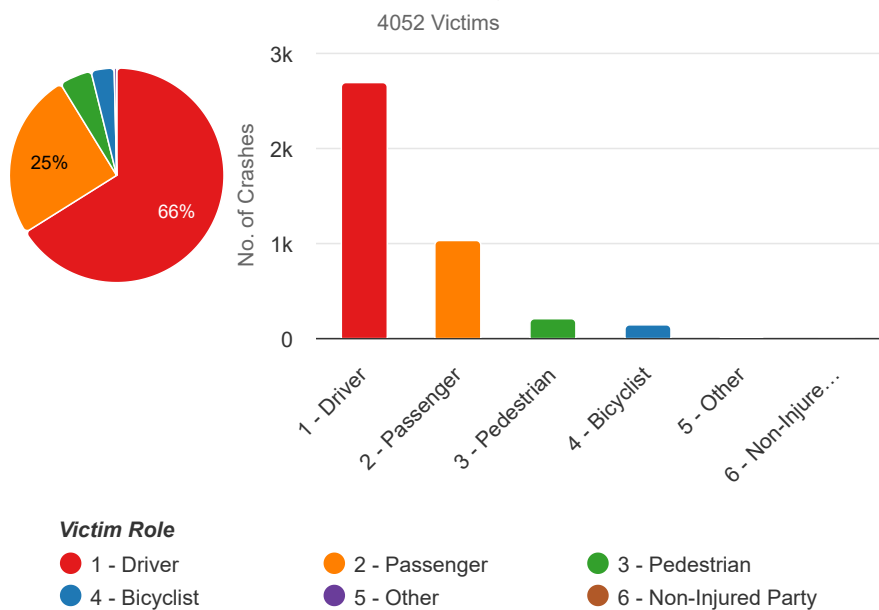
Number of Victims by Victim Degree of Injury



Victim Degree of Injury	Count	%
1 - Killed	36	0.89%
5 - Suspected Serious Injury	150	3.70%
6 - Suspected Minor Injury	936	23.10%
7 - Possible Injury	2930	72.31%

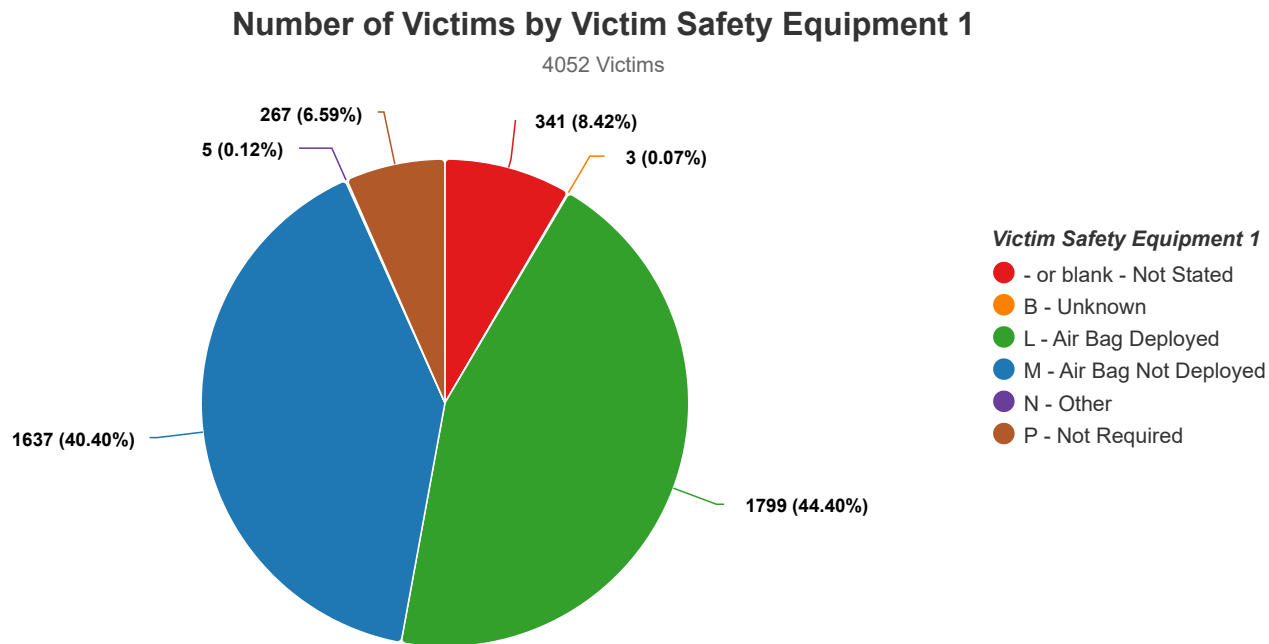
By Victim Role

Number of Victims by Victim Role

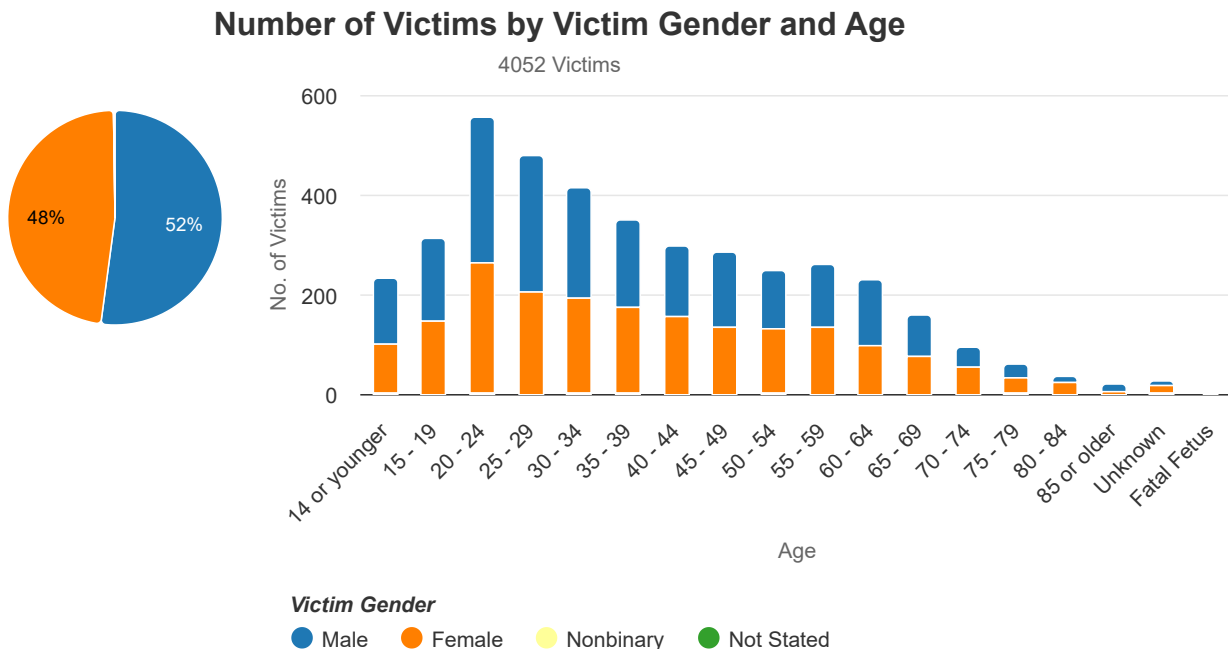


Victim Role	Count	%
1 - Driver	2678	66.09%
2 - Passenger	1019	25.15%
3 - Pedestrian	199	4.91%
4 - Bicyclist	141	3.48%
5 - Other	15	0.37%
6 - Non-Injured Party	0	0.00%

By Victim Safety Equipment 1

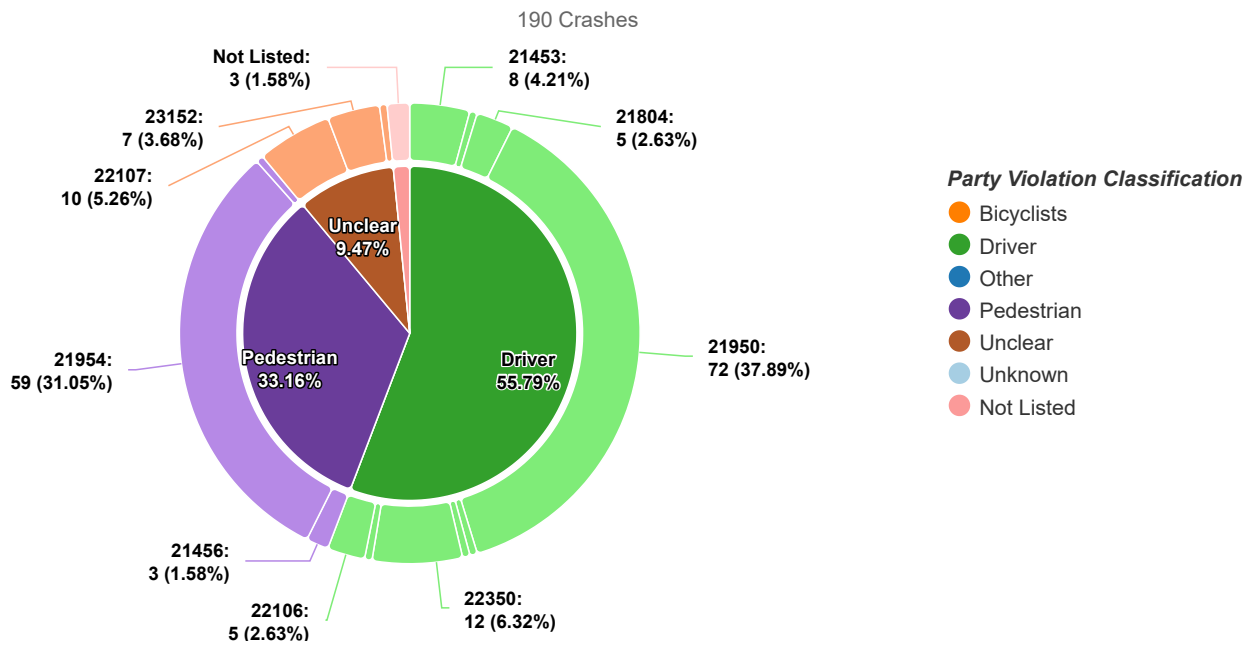


By Victim Gender and Age



Ped Crash Summary

Number of Crashes by Type of Violation

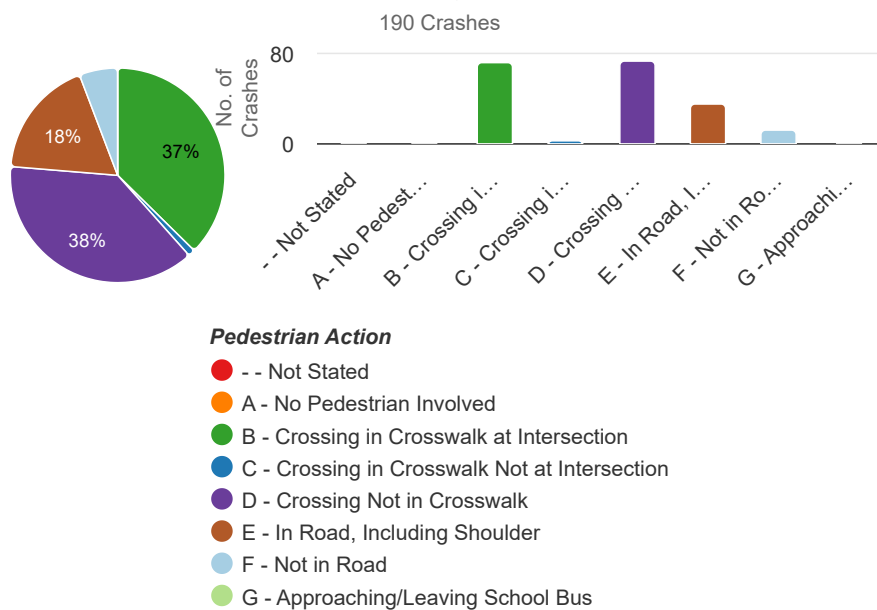


T

Party Violation Classification	Type of Violation	Description	Count	%
Driver	21950	Driver failure to yield right-of-way to pedestrians at a marked or unmarked crosswalk	72	37.89%
Pedestrian	21954	Pedestrian failure to yield right-of-way to vehicles when crossing outside of a marked or unmarked crosswalk	59	31.05%
Driver	22350	Speeding on the highway / Driving at a dangerously high speed given highway conditions like weather, visibility, traffic, and highway measurements, or driving at a speed that endangers people or property	12	6.32%
Unclear	22107	Unsafe turning or moving right or left on a roadway Turning without signaling	10	5.26%
Driver	21453	Failure to stop at a limit line or crosswalk at a red light Failure to yield right-of-way to pedestrian when turning on a red light	8	4.21%
Unclear	23152	Driving under the influence of alcohol (BAC 0.08+) or drugs	7	3.68%
Driver	21804	Driver failure to yield right-of-way when entering/crossing a highway	5	2.63%
Driver	22106	Unsafe starting or backing of a vehicle on a highway	5	2.63%
Pedestrian	21456	Pedestrian failure to yield right-of-way at traffic signal / Failure of pedestrian to yield right-of-way to vehicles already in intersection Failure to obey crosswalk symbols or finish crossing before "countdown" ends	3	1.58%
Not Listed	Not Listed	Violation code was not included in the crash	3	1.58%
Driver	21801	Driver failure to yield right-of-way when making a left turn or U-turn	1	0.53%
Driver	21951	Failure to stop for a vehicle that has already stopped to permit pedestrian crossing when approaching from behind	1	0.53%
Driver	21952	Driver failure to yield right-of-way to pedestrians on sidewalks	1	0.53%
Driver	22450	Driver failure to stop at a stop sign before a limit line (a crosswalk or intersection entrance). Failure to stop at limit line before railroad	1	0.53%
Pedestrian	21956	Pedestrian failure to walk close to the edge of the roadway when there is no sidewalk present / Pedestrian failure to walk on the left-hand edge of the roadway when outside of a business or resident district, unless crossing is not possible	1	0.53%
Unclear	21802	Failure to stop or yield right-of-way at a stop sign	1	0.53%

By Pedestrian Action

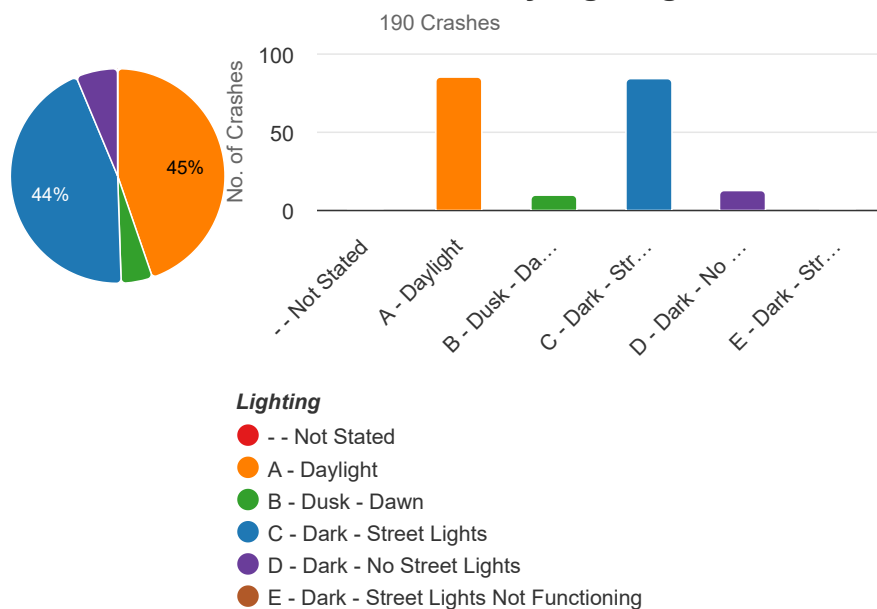
Number of Crashes by Pedestrian Action



Pedestrian Action	Count	%
-- Not Stated	0	0.0
A - No Pedestrian Involved	0	0.0
B - Crossing in Crosswalk at Intersection	71	37.3
C - Crossing in Crosswalk Not at Intersection	2	1.0
D - Crossing Not in Crosswalk	72	37.8
E - In Road, Including Shoulder	34	17.8
F - Not in Road	11	5.7
G - Approaching/Leaving School Bus	0	0.0

By Lighting

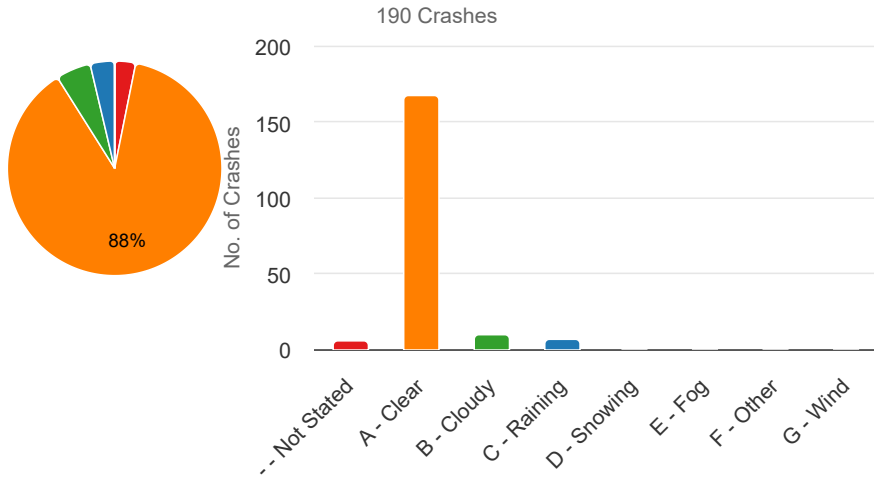
Number of Crashes by Lighting



Lighting	Count	%
-- Not Stated	0	0.00%
A - Daylight	85	44.74%
B - Dusk - Dawn	9	4.74%
C - Dark - Street Lights	84	44.21%
D - Dark - No Street Lights	12	6.32%
E - Dark - Street Lights Not Functioning	0	0.00%

By Weather

Number of Crashes by Weather



Weather	Count	%
-- Not Stated	6	3.16%
A - Clear	167	87.89%
B - Cloudy	10	5.26%
C - Raining	7	3.68%
D - Snowing	0	0.00%
E - Fog	0	0.00%
F - Other	0	0.00%
G - Wind	0	0.00%

Weather

- -- Not Stated ● A - Clear ● B - Cloudy ● C - Raining
- D - Snowing ● E - Fog ● F - Other ● G - Wind

Overview

This report was created with the help of The Transportation Injury Mapping System (TIMS). TIMS has been developed by UC Berkeley SafeTREC to provide quick, easy and free access to California crash data, the Statewide Integrated Traffic Records System (SWITRS), that has been geo-coded by SafeTREC to make it easy to map crashes.

Query by Case ID(s)

User Entered SWITRS Case ID(s)

Result

Total Crashes

5

Total Victims

0 Killed & 5 Injured

State Highway

None

Ped Involved

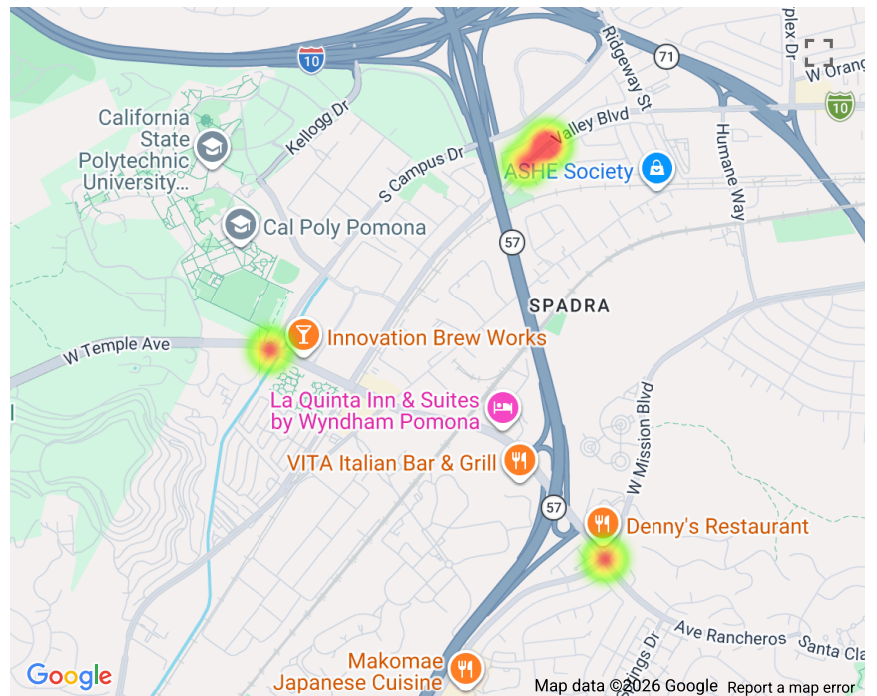
1 (20%)

Bike Involved

4 (80%)

Motorcycle Involved

None

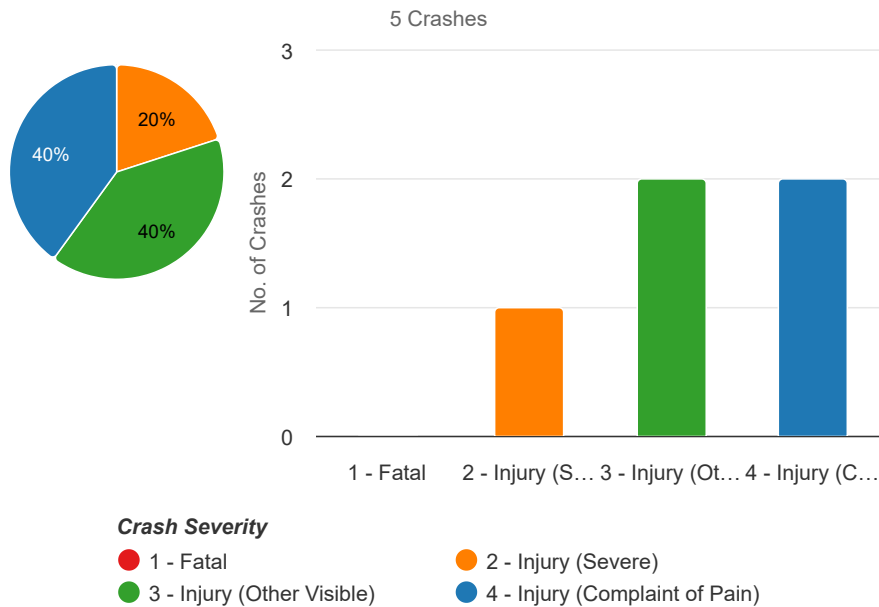


5 of 5 (100%) Crashes are geocoded and mapped.

Crash Summary

By Crash Severity

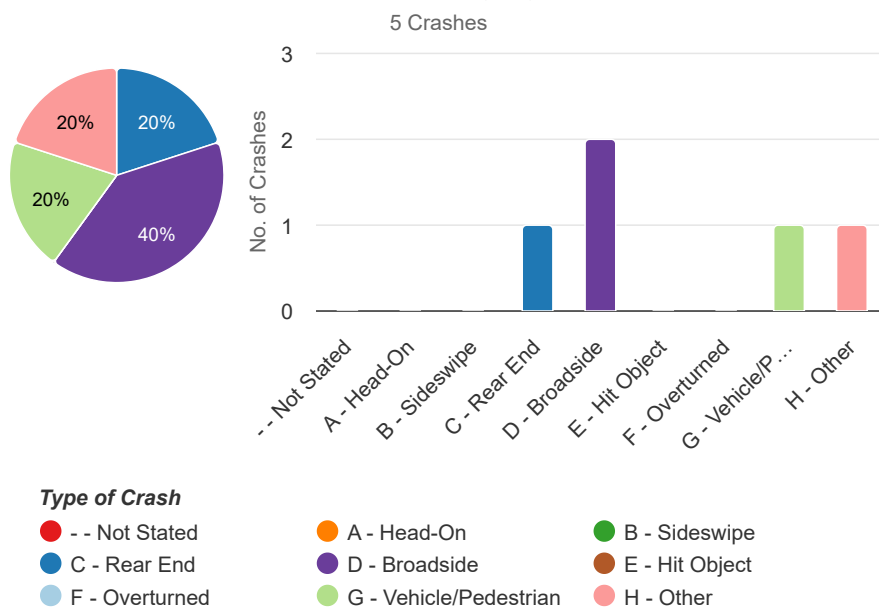
Number of Crashes by Crash Severity



Crash Severity	Count	%
1 - Fatal	0	0.00%
2 - Injury (Severe)	1	20.00%
3 - Injury (Other Visible)	2	40.00%
4 - Injury (Complaint of Pain)	2	40.00%

By Crash Type

Number of Crashes by Type of Crash

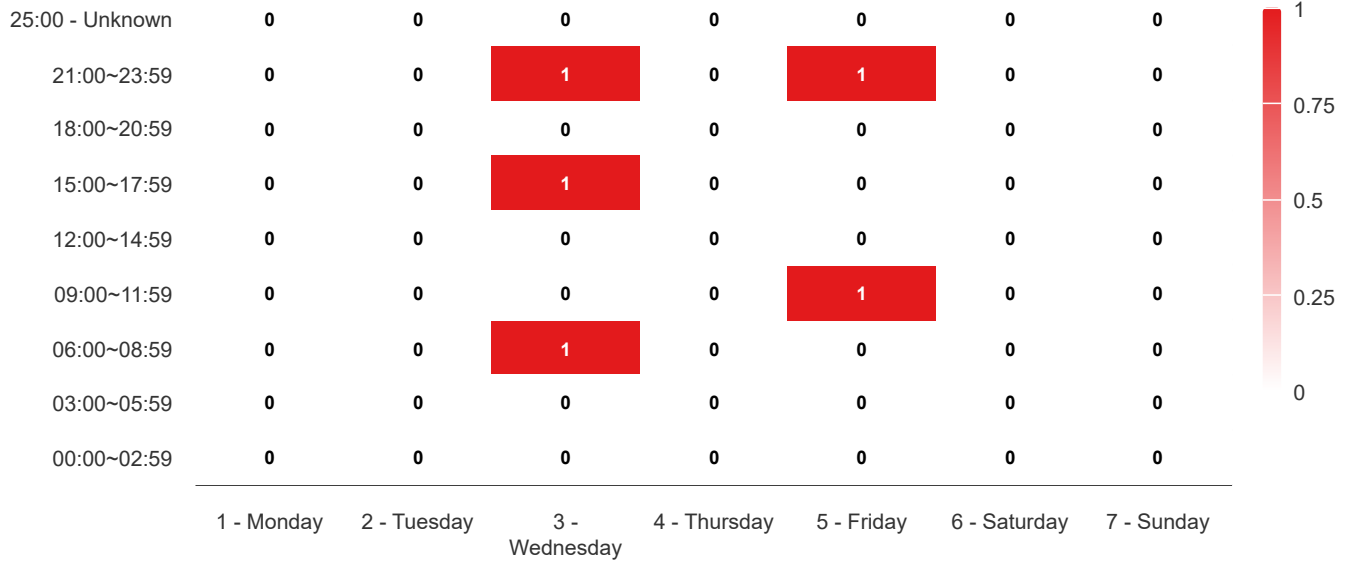


Type of Crash	Count	%
-- Not Stated	0	0.00%
A - Head-On	0	0.00%
B - Sideswipe	0	0.00%
C - Rear End	1	20.00%
D - Broadside	2	40.00%
E - Hit Object	0	0.00%
F - Overturned	0	0.00%
G - Vehicle/Pedestrian	1	20.00%
H - Other	1	20.00%

By Day of Week and Time

Number of Crashes per Day of Week per Time

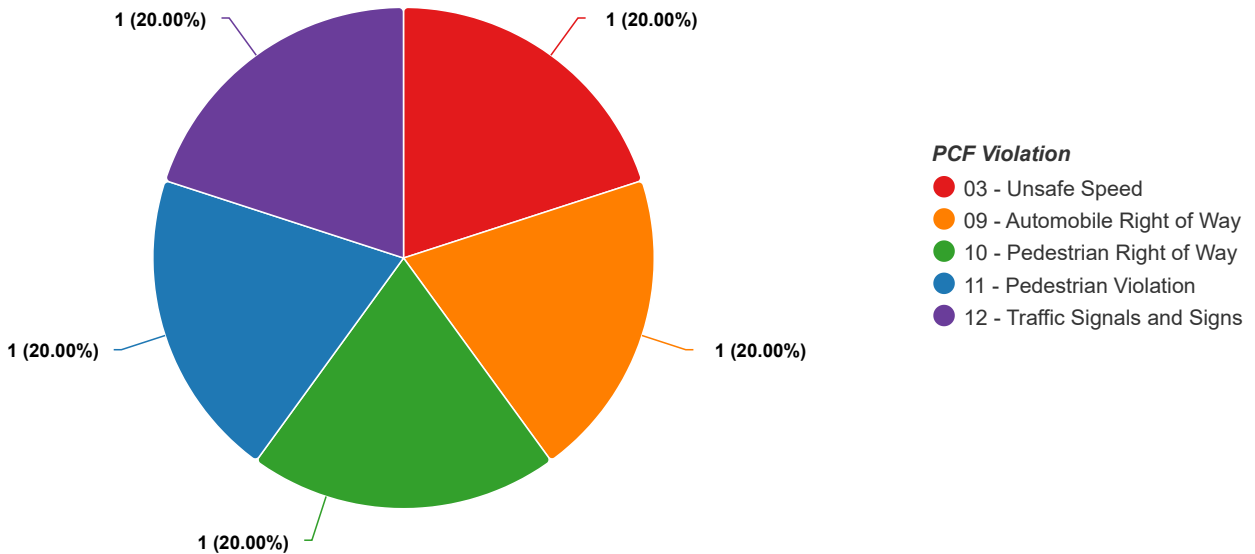
5 Crashes



By Primary Crash Factor (PCF) Violation

Number of Crashes by PCF Violation

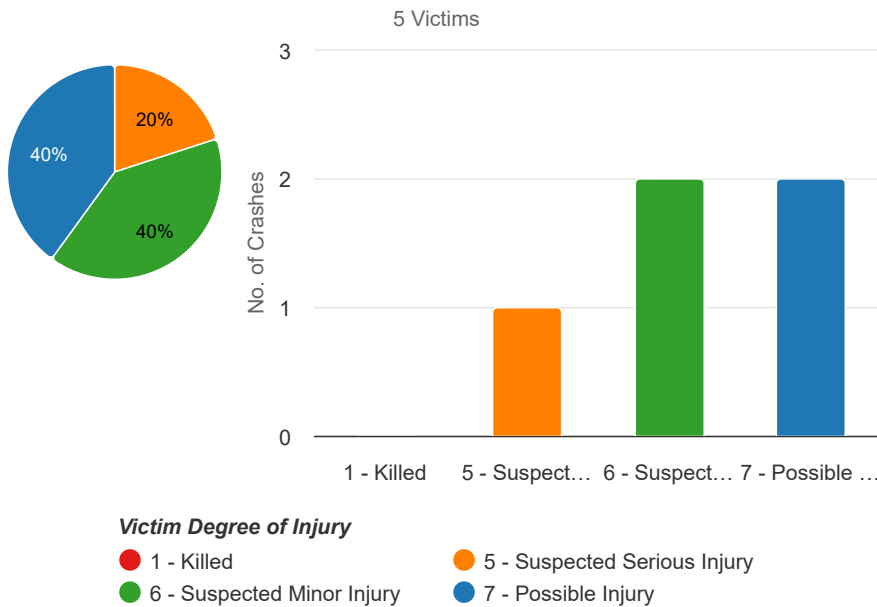
5 Crashes



Victim Summary

By Victim Degree of Injury

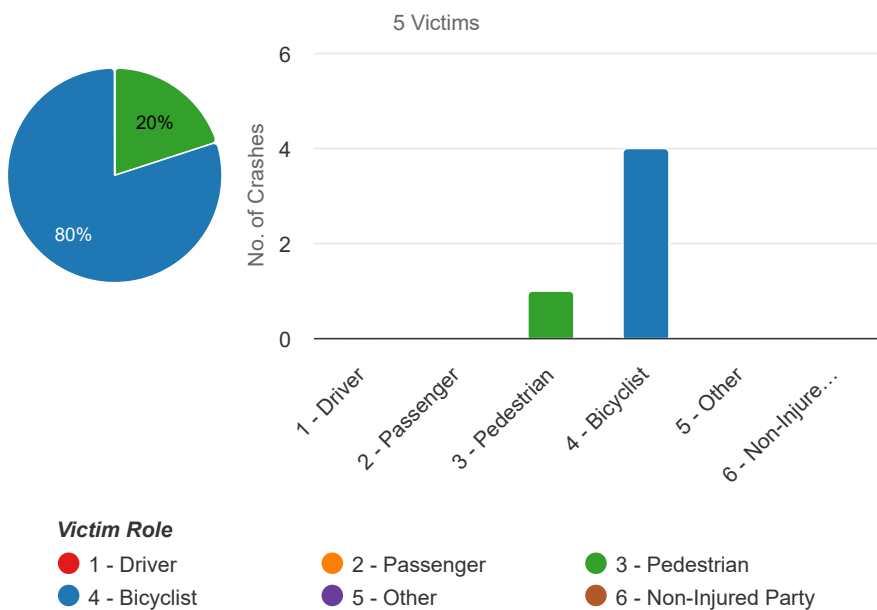
Number of Victims by Victim Degree of Injury



Victim Degree of Injury	Count	%
1 - Killed	0	0.00%
5 - Suspected Serious Injury	1	20.00%
6 - Suspected Minor Injury	2	40.00%
7 - Possible Injury	2	40.00%

By Victim Role

Number of Victims by Victim Role

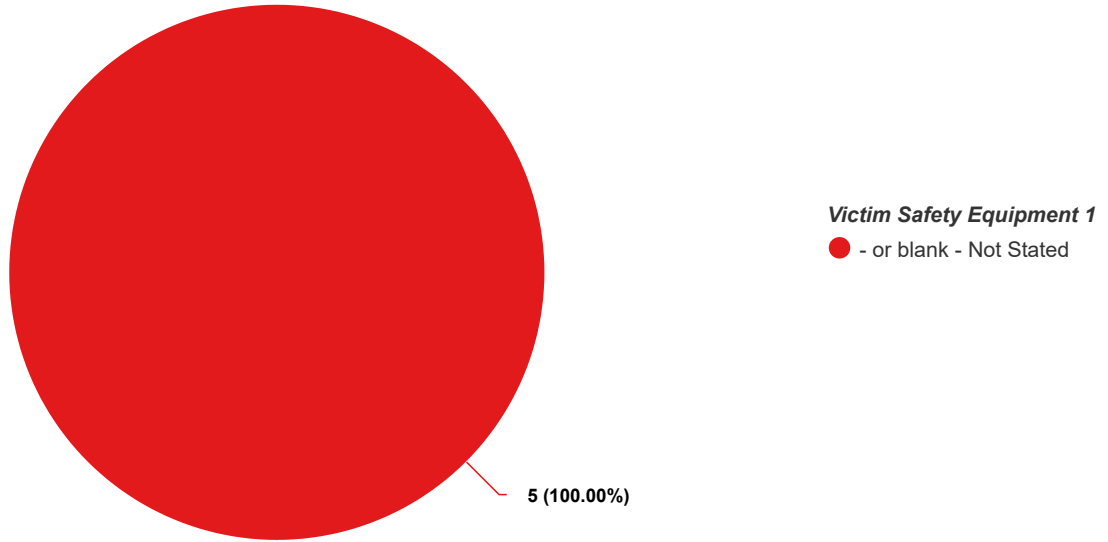


Victim Role	Count	%
1 - Driver	0	0.00%
2 - Passenger	0	0.00%
3 - Pedestrian	1	20.00%
4 - Bicyclist	4	80.00%
5 - Other	0	0.00%
6 - Non-Injured Party	0	0.00%

By Victim Safety Equipment 1

Number of Victims by Victim Safety Equipment 1

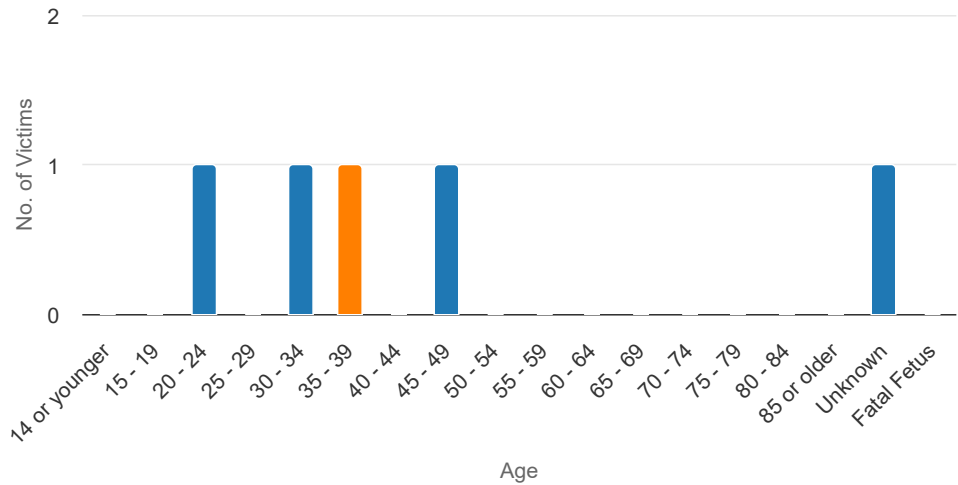
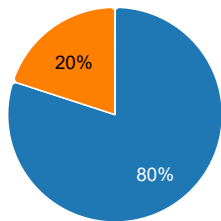
5 Victims



By Victim Gender and Age

Number of Victims by Victim Gender and Age

5 Victims



Victim Gender

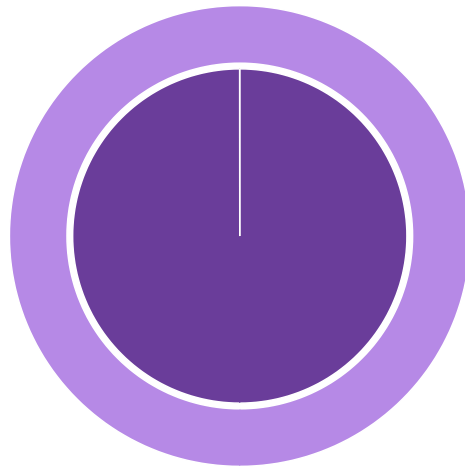
- Male
- Female
- Nonbinary
- Not Stated

Ped Crash Summary

By Type of Violation

Number of Crashes by Type of Violation

1 Crashes



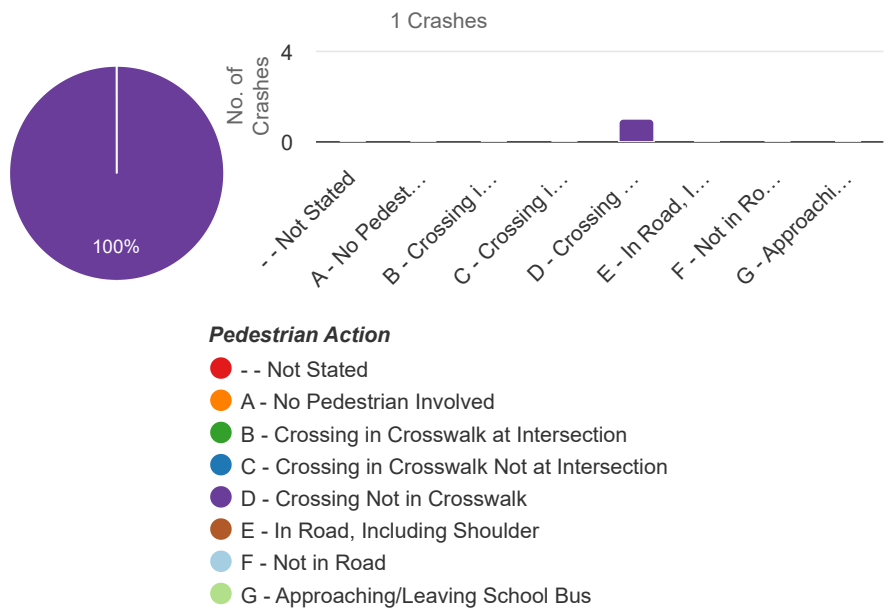
Party Violation Classification

- Bicyclists
- Driver
- Other
- Pedestrian
- Unclear
- Unknown

Party Violation Classification	Type of Violation	Description	Count	%
Pedestrian	21954	Pedestrian failure to yield right-of-way to vehicles when crossing outside of a marked or unmarked crosswalk	1	100.00%

By Pedestrian Action

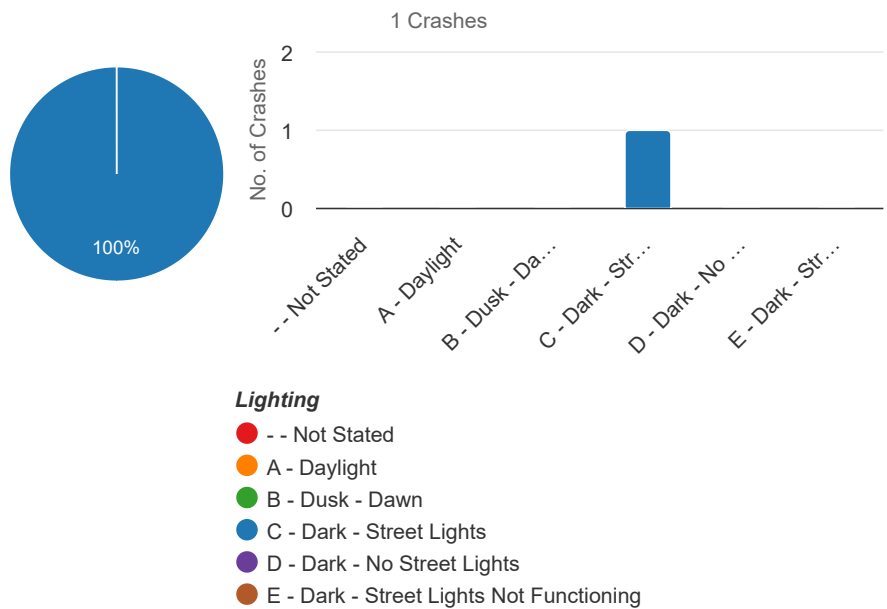
Number of Crashes by Pedestrian Action



Pedestrian Action	Count	%
-- Not Stated	0	0.00%
A - No Pedestrian Involved	0	0.00%
B - Crossing in Crosswalk at Intersection	0	0.00%
C - Crossing in Crosswalk Not at Intersection	0	0.00%
D - Crossing Not in Crosswalk	1	100.00%
E - In Road, Including Shoulder	0	0.00%
F - Not in Road	0	0.00%
G - Approaching/Leaving School Bus	0	0.00%

By Lighting

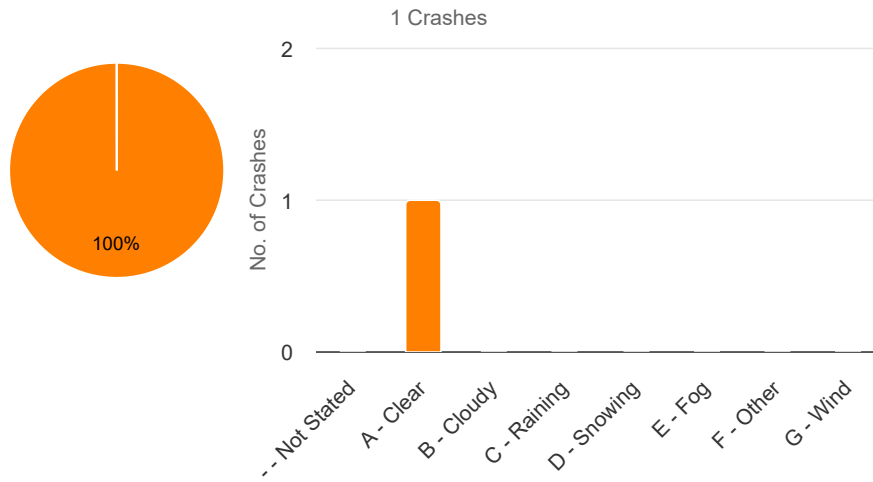
Number of Crashes by Lighting



Lighting	Count	%
-- Not Stated	0	0.00%
A - Daylight	0	0.00%
B - Dusk - Dawn	0	0.00%
C - Dark - Street Lights	1	100.00%
D - Dark - No Street Lights	0	0.00%
E - Dark - Street Lights Not Functioning	0	0.00%

By Weather

Number of Crashes by Weather



Weather

- -- Not Stated
- A - Clear
- B - Cloudy
- C - Raining
- D - Snowing
- E - Fog
- F - Other
- G - Wind

Weather	Count	%
-- Not Stated	0	0.00%
A - Clear	1	100.00%
B - Cloudy	0	0.00%
C - Raining	0	0.00%
D - Snowing	0	0.00%
E - Fog	0	0.00%
F - Other	0	0.00%
G - Wind	0	0.00%

ATP Maps & Summary Data

The tool is designed to support the California Active Transportation Program (ATP), as well as active transportation users and practitioners throughout California. The tool utilizes interactive crash maps to allow users to track and document pedestrian and bicycle crashes and generate data summaries within specified project and/or community limits.

Step 1: Select a County/City, Bike/Ped, Severity, and Years

County: Los Angeles

City: Pomona

Include 1 mile buffer outside of selected County/City: No

Include State Highway Related Crashes: Yes

Involved With: Pedestrian and Bicycle

Crash Severity: Fatal, Severe Injury, Other Visible Injury, and Complaint of Pain

Year: 2023 - 2025

Crash Summary for initial parameters defined above:

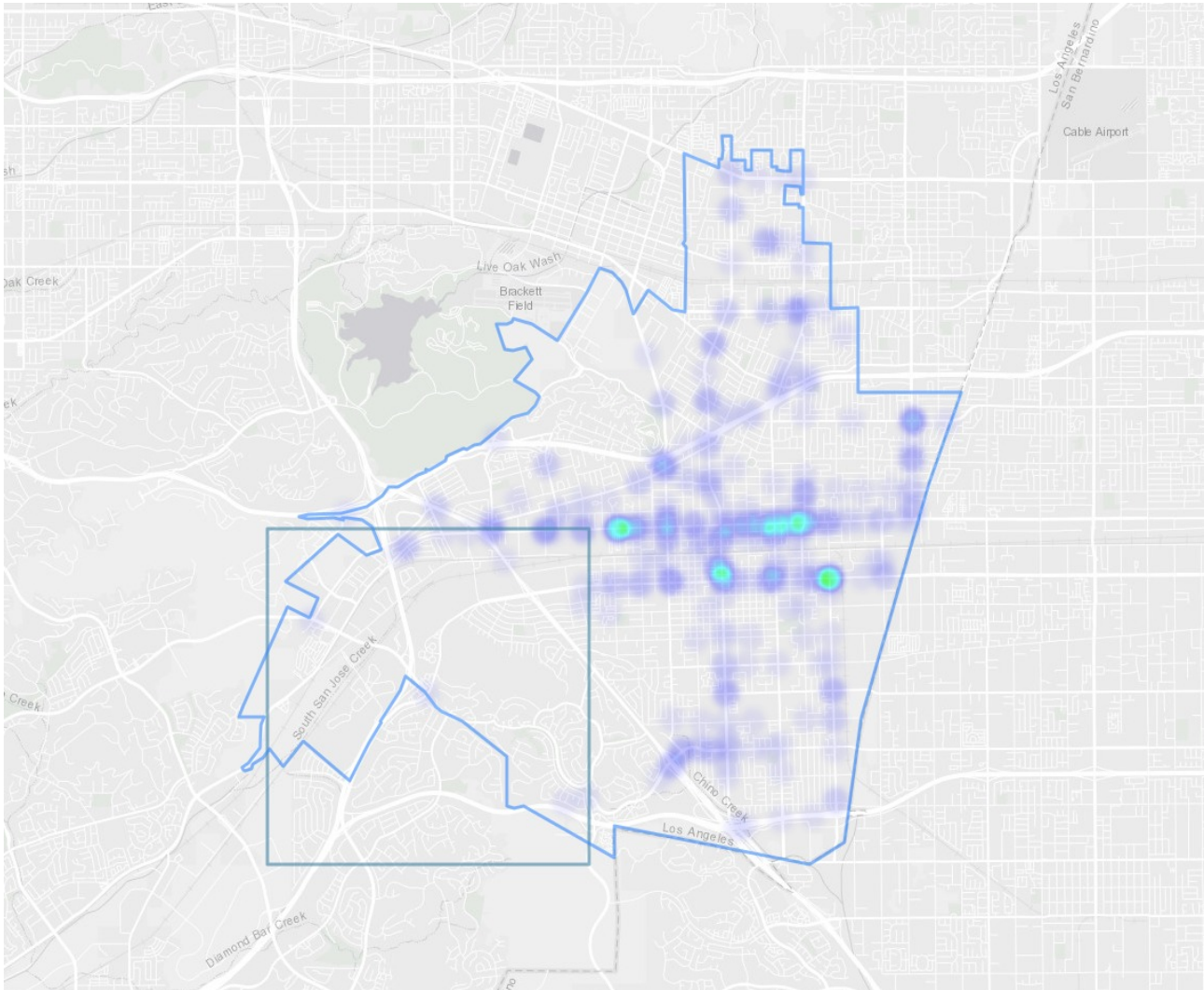
Number of Crashes by Crash Severity

Involved With	Fatal	Severe Injury	Visible Injury	Complaint of Pain	Total
Bicycle	2	10	58	71	141
Pedestrian	3	28	68	90	189

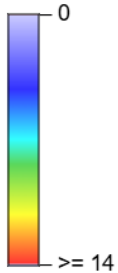
County/City Heat Map:

Step 2: Identify your project area to develop a more localized Community Heat Map

Select the size of your proposed project limits: Less than 3 miles across.



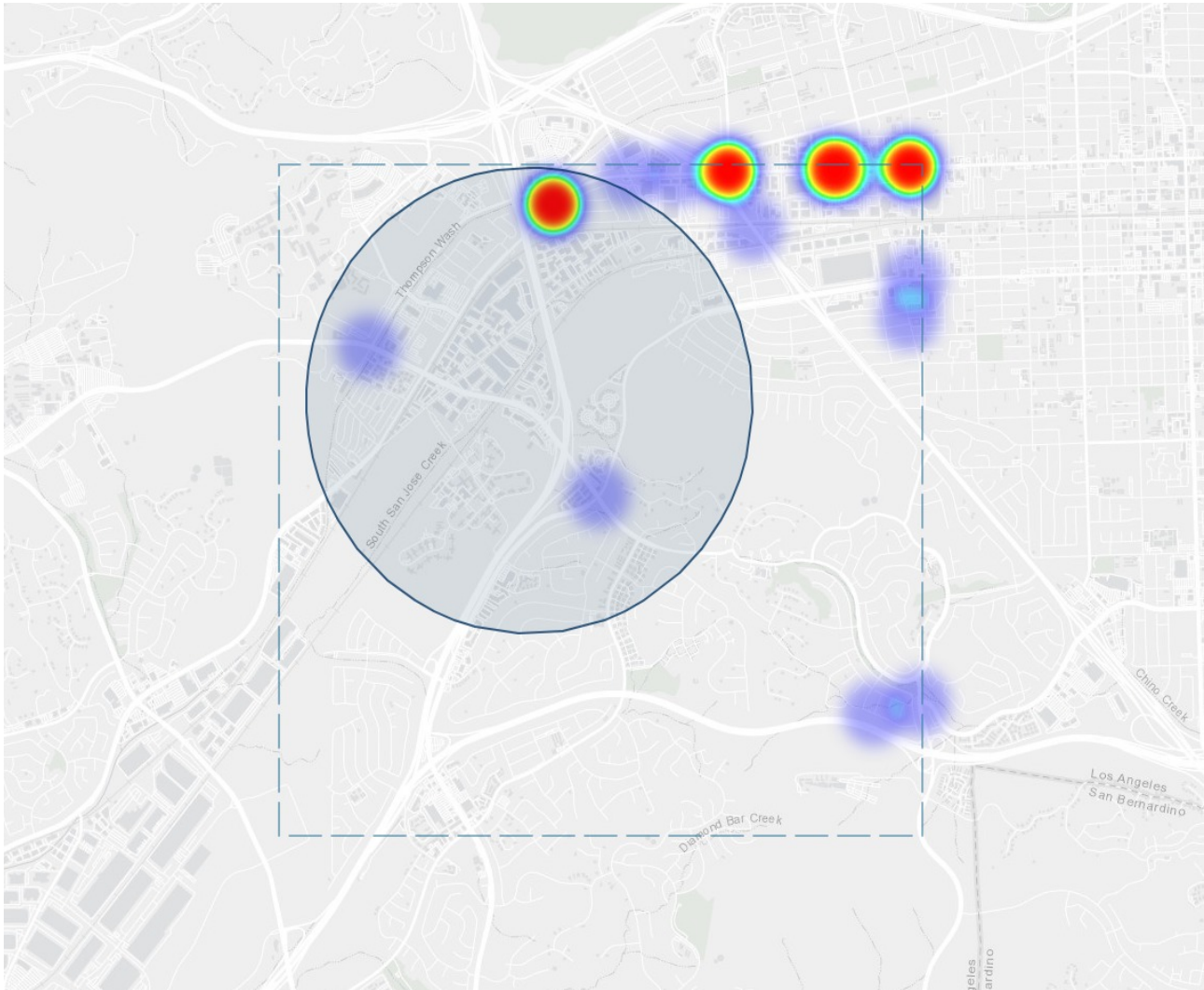
of Crashes



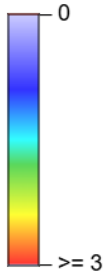
The heat map intensity scale is constant throughout the state.

Community Heat Map:

Step 3: Draw the project boundaries to get detailed crash data summaries and map



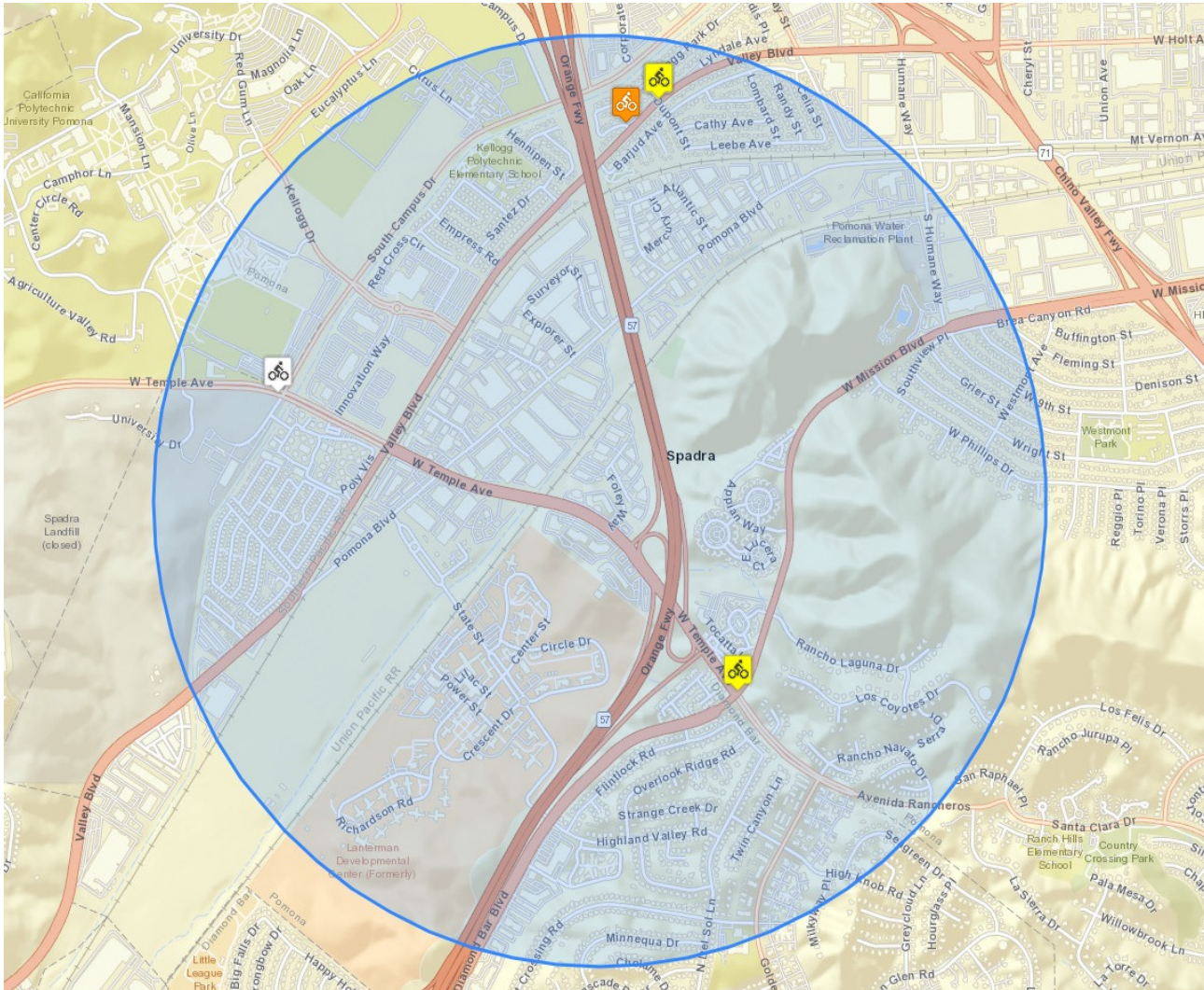
of Crashes



The heat map intensity scale is custom generated for the selected community.

Project Area Crash Map: 5 total crashes.

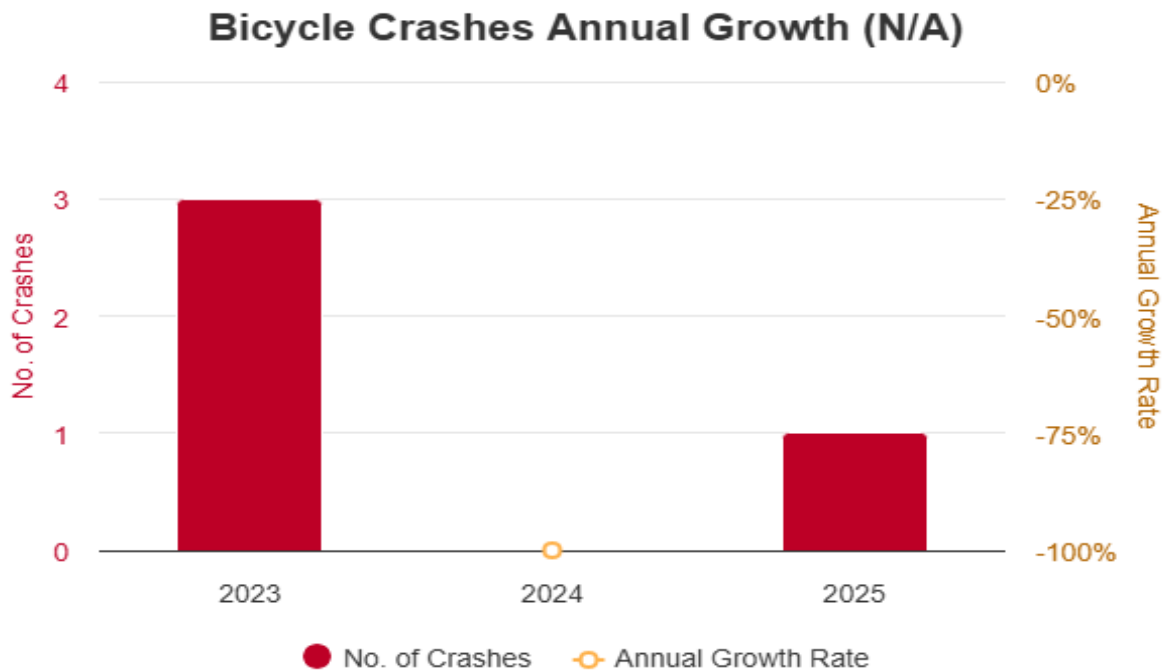
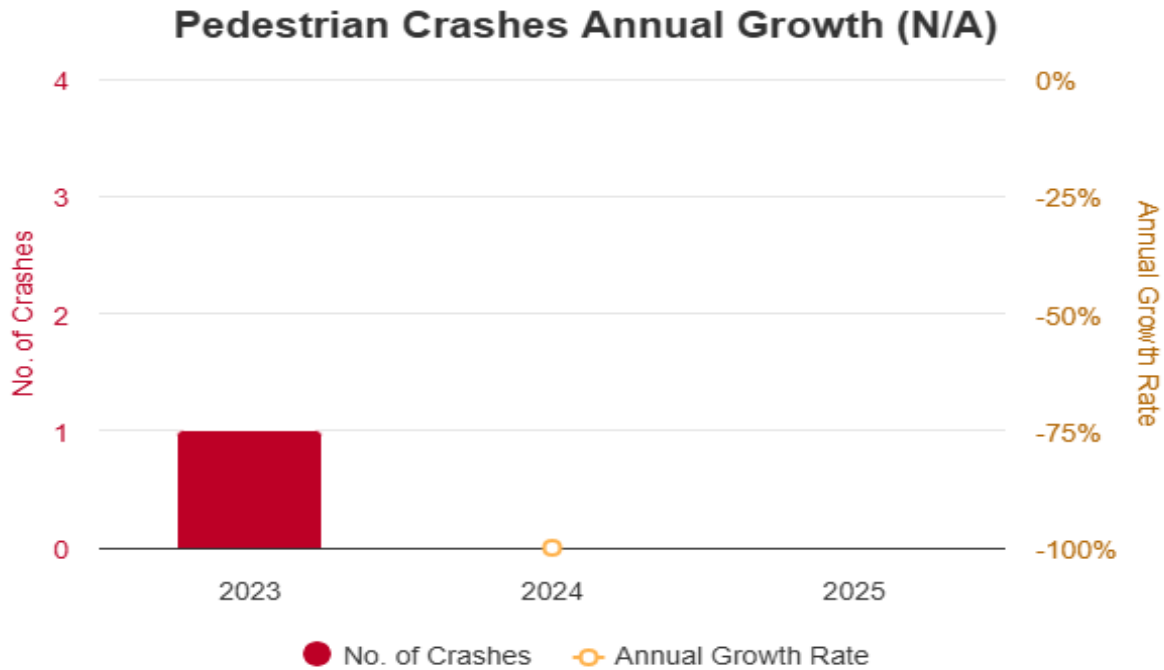
Step 4: Review the project-specific crash map



Step 5: Review the crash summary data, graphs and tables provided.

Summary Results

Involved With	Fatal	Severe Injury	Visible Injury	Complaint of Pain	Total
Bicycle	0	1	2	1	4
Pedestrian	0	0	0	1	1



Crash List

CASE ID	Date	Time	Primary Rd	Secondary Rd	Dist & Dir from Int.	Bike	Ped	Killed	Injured
81981278	01/11/2023	15:53	Mission Blvd	Temple Ave	At Int	Yes	No	0	1
81992280	01/27/2023	11:41	Temple Ave	South Campus Dr	65 ft North	Yes	No	0	1
82354523	09/27/2023	08:15	Valley Blvd	Dupont St	6 ft East	Yes	No	0	1
82354661	11/22/2023	23:11	Valley Blvd	Dupont St	At Int	No	Yes	0	1
84777977	04/18/2025	23:12	Valley Blvd	Lyndale Ave (E)	3 ft South	Yes	No	0	1