

# CIVIC CENTER PARK PLAYGROUND

## Preschool Play Area - Ages 2-5 Years Old

- Welcome Sign (Ages 2-5)
- Toddler Swing with (2) Full Bucket Seats
- Smart Play Cube
- Double Bobble Spring Rider



## Main Structure Play Area – Ages 5-12 Years Old

- Welcome Sign (Ages 5-12)
- Loop Arch
- 2-Sided Cable Net off Deck to Hill
- Elevated Net Climber w/ SwiggleKnots & Roto Net Pods
- Logo Climber
- Whooshwinder Slide
- Dot-to-Dot Climber, 80"
- Corkscrew Climber, 60"
- E-Pod Seat with (4) 16" Pod Climbers, (1) 10" Pod Climber & Ring Pull
- Crest Climber
- Lolliladder w/ (2) E-Pods
- 40" Rollerslide with Transition Bench
- Clatterbridge
- Alpine Slide, 96"
- Boogie Board
- Rocker Seat
- SpaceWalk Climber
- Cozy Climber
- Canyon Climber
- 48" Cable Climber
- 10' TurboTwister Slide
- Cubic Tower w/ 20' Central Climber w/ SwiggleKnots, Belting & Cables
- Curved Transfer Module
- Wood Plank Ladder
- 20' Stainless Steel Spiral Slide w/ Portholes & Concrete Exit

## Freestanding Play Area – Ages 5-12 Years Old

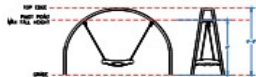
- We-saw
- We-Go-Round w/ Perforated Panels & (2) Seats
- Oodle Swing
- Forma Swing Frame with (1) Molded Bucket Seat w/ Harness for Ages 2-5 & (1) Molded Bucket Seat w/ Harness for Ages 5-12
- Forma Swing Frame Additional Bay with (2) Belt Seats
- Forma Fortress Multi-Climber
- Facet Crawl Tunnel with (2) 14" Facet Steppers, (1) 22" Facet Stepper & (1) Facet Balance Beam Single
- Forma Folio Balance Climber
- Forma Footprint Balance Beam
- Forma Fox Den Hangouts
- Stainless Steel Embankment Slide, 36" tall x 60" wide



CITY OF  
POMONA, CA



FORMA SWINGS



OODLE SWING



WE-GO-ROUND



WE-SAW



SMARTPLAY CUBE

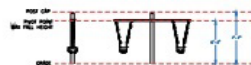


WELCOME SIGN



NORTH VIEW FREESTANDING

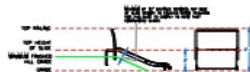
WEST VIEW FREESTANDING



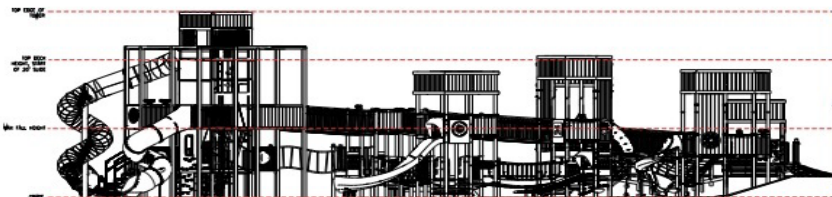
TODDLER SWING FRAME



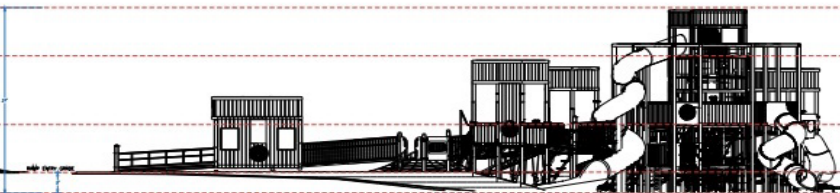
DOUBLE BOBBLE RIDER



SST HILLSLIDE



MAIN STRUCTURE SOUTH VIEW



MAIN STRUCTURE WEST VIEW



ADA TRANSFER STATION

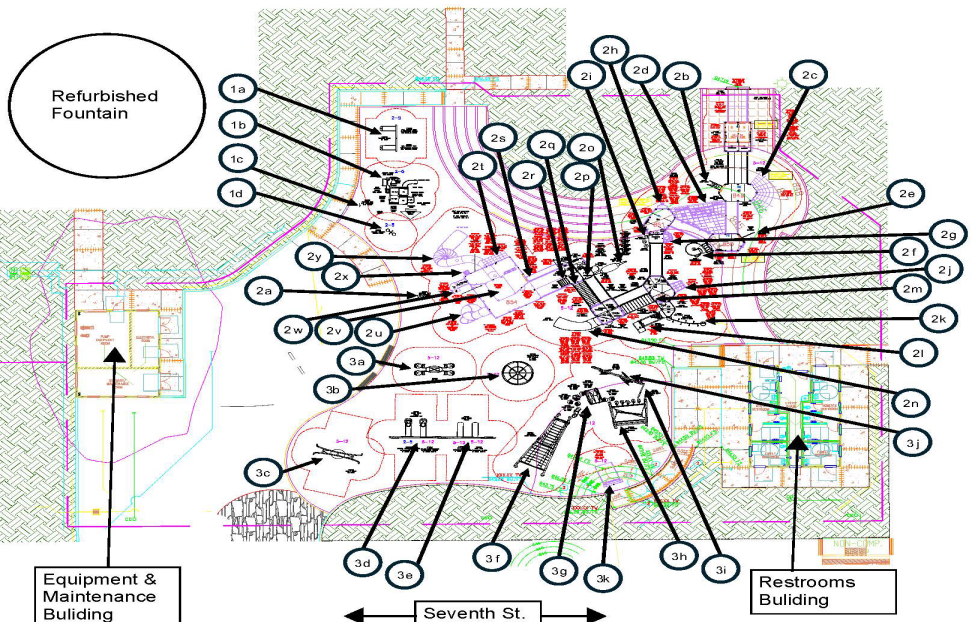
DECK TRANSFER STATION

CIVIC CENTER PARK: POMONA, CA



1177102-04-01

Civic Center Park Playground		
Manufacturer: Landscape Structures		
Contact: Eric Lewis, 818-500-0332, eric@recwest.com		
Key	Product Description	Model No.
Proposed Play Area		
Ages 2-5 years old		
1a	Toddler Swing with (2) Full Bucket seats	177336A 1760386
1b	Smart Play Cube	205160A
1c	Welcome Sign (Ages 2-5)	182505A
1d	Double Bobble Spring Rider	164075B
Main Structure Play Area		
Ages 5-12 years old		
2a	Welcome Sign (Ages 5-12)	182505C
2b	Loop Arch	122914A
2c	2-Sided Cable Net Off Deck to Hill	CP037673
2d	Elevated Net Climber w/ Swigeknots & Roto Net Pods	CP037680
2e	Logo Climber	176080A
2f	Whoopee dier Slide	226811A
2g	Dot To Dot Climber, 80"	CP037695
2h	Corkscrew Climber, 60"	CP037685
2i	E-Post Seat with (3) 16" Pod Climbers, (1) 20" Pod Climber & Ring Pull	1666805A 120711A 1269974A 130873A
2j	Crest Climber	CP009164
2k	Lollipop Ladder w/ (2) E-Posts	193170A
2l	40" Roller coaster with Transition Bench	123335A CP023664
2m	Caterpillar	143135A
2n	Alpine Slide, 95"	271761B
2o	Boogie Board	CP037679
2p	Rockier Seat	CP047673
2q	Space Walk Climber	145107A
2r	Cocoy Climber	125293A
2s	Canyon Climber	CP037664
2t	48" Cable Climber	CP037666
2u	10" Turbo Twister Slide	CP037658
2v	Cable Tower w/ 20' Central Climber w/ Swigeknots, Baling & Cables	CP037682
2w	Curved Transfer Module	CP031092
2x	Wood Plank Ladder	CP037667
2y	20' Stainless Steel Spiral Slide w/ Portholes & Concrete Exit	CP037683
Freestanding Play Area		
Ages 1-32 years old		
3a	Wet Saw	186430A
3b	We Go Round w/ Perforated Panels & (2) Seats	248819A
3c	Double Swing	1750992A
3d	Forma Swing Frame with (1) Molded Bucket Seat w/ Harness for Ages 2-5 & (1) Molded Bucket Seat w/ Harness for Ages 5-12	307426A 218621C 177351A
3e	Forma Swing Frame/Optional Bay with (2) Belt Seats	316662A 174018A
3f	Forma Fortress Multi-Climber	307426A
3g	Facet Crawl Tunnel with (2) 14" Facet Stoppers, (1) 22" Facet Stopper & (1) Facet Balance Beam Single	257396A 237301A 237104A 237994A
3h	Forma Fido Balance Climber	307426A
3i	Forma Footprint Balance Beam	307426A
3j	Forma Fox Den Hangouts	307426A
3k	Stainless Steel Embankment Slide, 36" tall x 60" wide	CP007309



City Hall

Library

North

Equipment & Maintenance Building

Seventh St.

Restrooms Building

**landscape structures**

IT IS THE MANUFACTURER'S OPINION AND INTENT THAT THE USE AND LAYOUT OF THESE COMPONENTS CONFORM WITH THE AMERICAN SOCIETY FOR TESTING AND MATERIALS (ASTM) STANDARD ASTM 11487

THIS PLAY AREA & PLAY EQUIPMENT IS DESIGNED FOR AGES 2-12 YEARS UNLESS OTHERWISE NOTED ON PLAN.

IT IS THE MANUFACTURER'S OPINION THAT THIS PLAY AREA DOES CONFORM TO THE A.D.A. ACCESSIBILITY STANDARDS, ASSUMING AN ACCESSIBLE PROTECTIVE SURFACING IS PROVIDED, AS INDICATED, OR WITHIN THE ENTIRE USE ZONE.

FOR ADDITIONAL INFORMATION REGARDING INFORMATION AVAILABLE TO US PRIOR TO CONSTRUCTION, CONTACT US FOR INFORMATION INCLUDING SITE DIMENSIONS, EXISTING UTILITIES, SITE CONDITIONS, AND DRAWINGS. SOLUTIONS SHOULD BE OBTAINED, EVALUATED, & LISTED IN THE FINAL DESIGN. PLEASE VERIFY ALL LOCATION OF ALL EXISTING UTILITIES, EQUIPMENT, AND SITE LANDMARKS PRIOR TO BEGINNING. SIGNS SHOULD NOT FACE THE HOT AFTERNOON SUN.

CHOOSE A PROTECTIVE SURFACING MATERIAL THAT HAS A SPECIAL, RIGID WALK TO MEET THE MAXIMUM FALL HEIGHT FOR THE EQUIPMENT (REF. ASTM F1252 STANDARD CONSUMER SAFETY PERFORMANCE SPECIFICATION FOR RANGING EQUIPMENT FOR PUBLIC USE, SECTION 4 CURRENT EDITIONS). THE SURFACING MUST BE WELL DRAINAGE IF THE SITE DOES NOT DRAIN NATURALLY & MUST BE TIED TO A GUTTER, VAP TO 1/4" FOR FOOT TO A STORM SEWER OR A TRENCH DRAIN.

ACCESSIBLE/PROTECTIVE SURFACING TO BE A COMBINATION OF JAWARY AND LOOSE FILL MATERIALS.

IT IS THE MANUFACTURER'S OPINION AND INTENT THAT THE LAYOUT OF THESE COMPONENTS CONFORM WITH THE U.S. CONSUMER PRODUCT SAFETY COMMISSION'S (CPSC) DRAWINGS "HANDBOOK FOR PUBLIC PLAYGROUND SAFETY".

DESIGNED BY: KAC  
COPYRIGHT: 3/26/24  
LANDSCAPE STRUCTURES, INC.  
801 7th STREET SOUTH, P.O. BOX 186  
DUNSMITH, ARIZONA 85928  
PH: 1-800-708-0333 FAX: 1-785-892-8081

2/7/24	1177102-01-03	KAC
Date	Previous Drawing #	Initials



Civic Center Park  
Pamona, CA

RecWest Outdoor  
Products, Inc.  
Eric Lewis

SYSTEM TYPE: Freestanding, PlayBooster  
DRAWING #: 1177102-01-04

