



Current Data | Yesterday's Data | Daily Highs | Historical Data

Select A Station

Pomona/Walnut Valley 1

Station Name : Pomona/Walnut Valley 1

Current AQI : **55 (Moderate) ?**

Based on : Fine Particulate Matter (PM2.5) - 24 Hr Average

Thursday, April 20, 2017 2:25:58 PM

[Air Quality Index Explained](#) | [Pollutants Explained](#) | [Disclaimer](#)

Current AQI | Monitored Data

**Current AQI as of 2:00pm  
for Pomona-Walnut Valley**

Variable	Abbreviation	Averaging Period	AQI Value	AQI Description	AQI Color Code	Meaning
Ozone	O <sub>3</sub>	8-hr	46	Good		Air quality is considered satisfactory, and air pollution poses little or no risk.
Fine Particulate Matter	PM <sub>2.5</sub>	24-hr	55	Moderate		Air quality is acceptable; however, for some pollutants there may be a moderate health concern for a very small number of people. For example, people who are unusually sensitive to ozone may experience respiratory symptoms.
Particulate Matter	PM <sub>10B</sub>	24-hr	24	Good		Air quality is considered satisfactory, and air pollution poses little or no risk.
Nitrogen Dioxide	NO <sub>2</sub>	24-hr	5	Good		Air quality is considered satisfactory, and air pollution poses little or no risk.
Carbon Monoxide	CO	8-hr	5	Good		Air quality is considered satisfactory, and air pollution poses little or no risk.

On May 15, 2008, AQMD began forecasting and reporting in the 8-hour ozone air quality standard, as adopted by the U.S. Environmental Protection Agency. The 1-hour standard reflects the more stringent state standard

Neighborhood air quality events, such as wildfires that create smoke, may not be reflected in the data presented. Users should note that AQMD data is updated on the hour. If conditions change during the hour, there may be a delay before the changes are reflected on the maps and in the data.

[Home](#) | [Community](#) | [Business](#) | [Technology](#) | [Health & Education](#)  
[Inside AQMD](#) | [Employment](#) | [Contact Us](#) | [Disclaimer](#) | [Website Navigation Tips](#)  
[Question or Need Info?](#) - [Report Website Problem](#)  
 21865 Copley Dr, Diamond Bar, CA 91765 - (909)396-2000 - (800) CUT-SMOG (288-7664)



Current Data | Yesterday's Data | Daily Highs | Historical Data

Select A Station

Pomona/Walnut Valley 1

Submit

Station Name : Pomona/Walnut Valley 1

Current AQI : 55 (Moderate) ?

Based on : Fine Particulate Matter (PM2.5) - 24 Hr Average

Thursday, April 20, 2017 2:25:58 PM

[Air Quality Index Explained](#) | [Pollutants Explained](#) | [Disclaimer](#)

Current AQI | Monitored Data

**Current Hourly Data as of 2:00pm**  
**Station: Pomona/Walnut Valley 1 Selected Variable: Ozone (1-hr)**

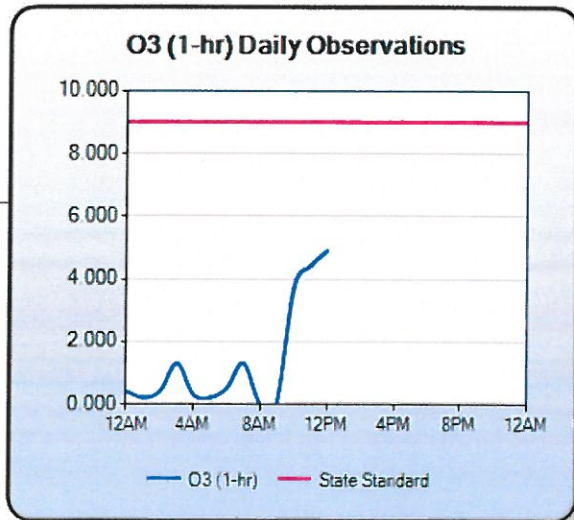
[Grid View](#) | [Graph View](#) | [Grid & Graph View](#)

[Export Zoom to In Excel Zoom Out](#)

[Zoom Help?](#)

Variable	Abbreviation	Averaging Period	Current Value	Units	State Standard	Federal Standard
Ozone	O <sub>3</sub>	1-hr	4.9	pphm	9	N/A
Nitrogen Dioxide	NO <sub>2</sub>	1-hr	1.2	pphm	18	N/A
Carbon Monoxide	CO	1-hr	0.0	ppm	20	35
Wind Direction	WD	1-hr	North	direction	N/A	N/A
Wind Speed	WS	1-hr	0.0	mph	N/A	N/A

Note: Click on the row to generate the graph for the corresponding variable

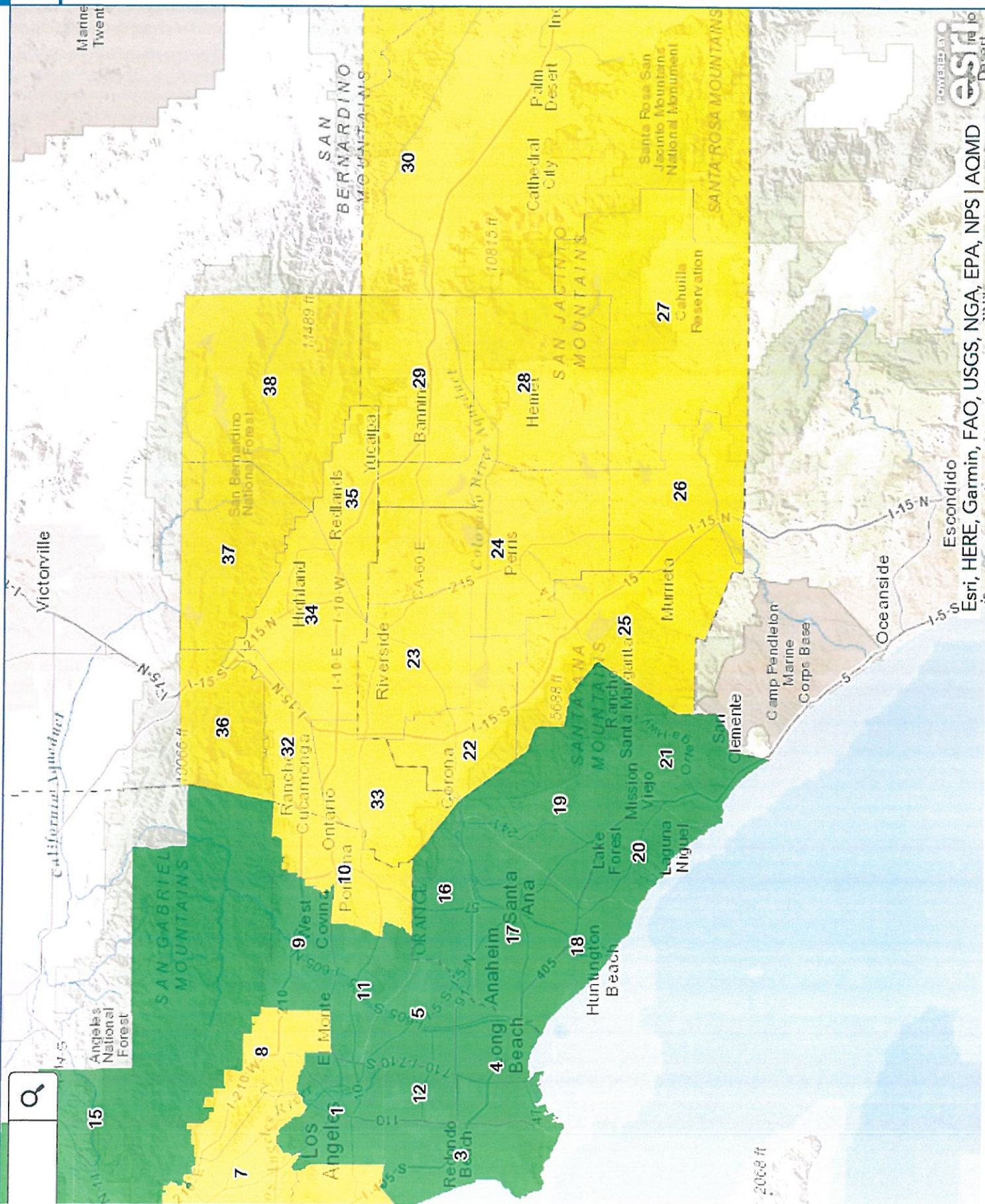


[Technology](#) | [Health & Education](#)  
[Get Us](#) | [Disclaimer](#) | [Website Navigation Tips](#)  
 - [Report Website Problem](#)  
 5 - (909)396-2000 - (800) CUT-SMOG (288-7664)

N/A - No Standard has been adopted    ppm - parts per million    pphm - parts per hundred million  
 µg/m<sup>3</sup> - micrograms per cubic meter    deg F - degrees Fahrenheit    mph - miles per hour

Neighborhood air quality events, such as wildfires that create smoke, may not be reflected in the data presented. Users should note that AQMD data is updated on the hour. If conditions change during the hour, there may be a delay before the changes are reflected on the maps and in the data.





### Legend

#### HourlyAQI

AQI Value	Color
301+	Brown
201 - 300	Red-Orange
151 - 200	Red
101 - 150	Orange
51 - 100	Yellow
0 - 50	Green



Esri, HERE, Garmin, FAO, USGS, NGA, EPA, NPS | AQMD

2008 ft