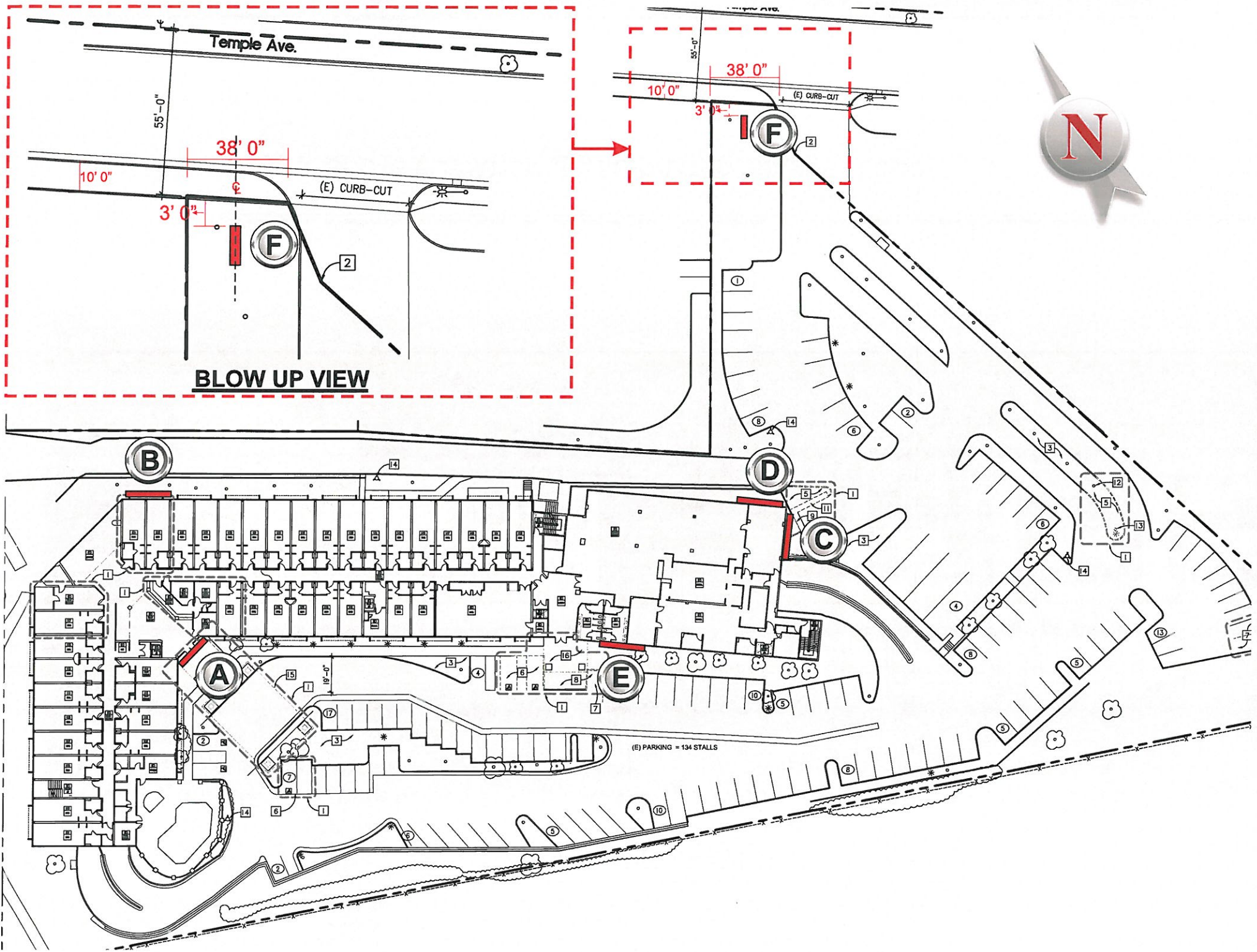


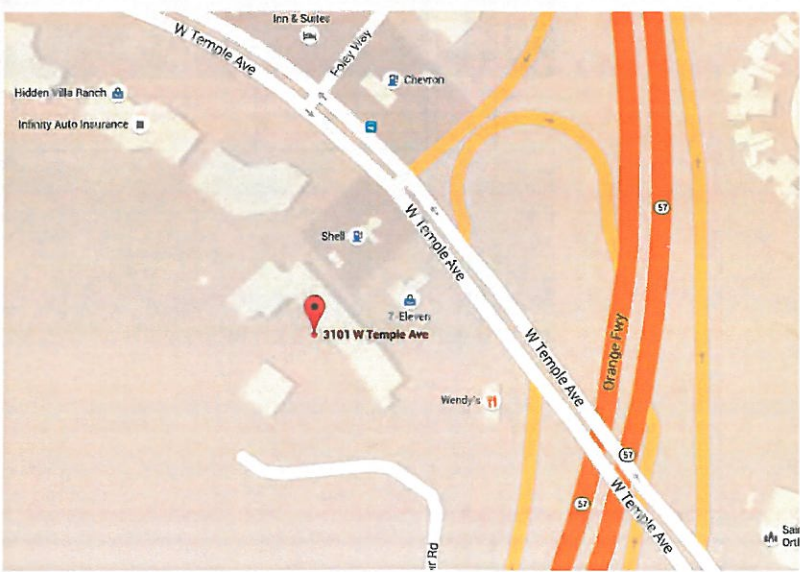
SITE PLAN



SIGNAGE SPECIFICATIONS

- (A) ILLUMINATED CHANNEL LOGO & LETTERS**
Manufacture and Install (1) Channel Logo & Letters
- (B) ILLUMINATED CHANNEL LETTERS (REMOTE RACEWAY)**
Manufacture and Install (1) set of Channel Letters
- (C) ILLUMINATED CHANNEL LETTERS (REMOTE RACEWAY)**
Manufacture and Install (1) set of Channel Letters
- (D) ILLUMINATED CHANNEL LETTERS (REMOTE RACEWAY)**
Manufacture and Install (1) set of Channel Letters
- (E) ILLUMINATED CHANNEL LETTERS ON RACEWAY**
Manufacture and Install (1) set of Channel Letters
- (F) CUSTOM D/F MONUMENT SIGN @ 11'-8" OAH**
Manufacture and Install (1) Monument Sign

AREA MAP



COAST SIGN
INCORPORATED
1500 West Embassy St. Anaheim, CA 92802
(714) 520-9144 FAX: (714) 520-5847

Date: 10-10-16
Scale:
Drawn: Nariel L.
Sales: Brian L.
Project Name: HILTON DOUBLE TREE
Address: 3101 W. Temple Avenue
City / State / Zip: Pomona, CA
Client Approval: _____
Date: _____

This is an original unpublished drawing created by Coast Sign, Inc. It is submitted for your personal use in conjunction with a project being planned for you by Coast Sign, Inc., And shall not be reproduced, used by or disclosed to any firm or corporation for any purpose whatsoever without written permission.

No.	Designer	Date	Revision Notes
1			
2			
3			
4			
5			
6			

No.	Designer	Date	Revision Notes
7			
8			
9			
10			
11			
12			

DESIGN DRAWING 1 of 12
Request Number:
PRJ-DBTR-110157
File Location:
W:\Hilton Double Tree\Art\Drawings\PRJ-DBTR-110157



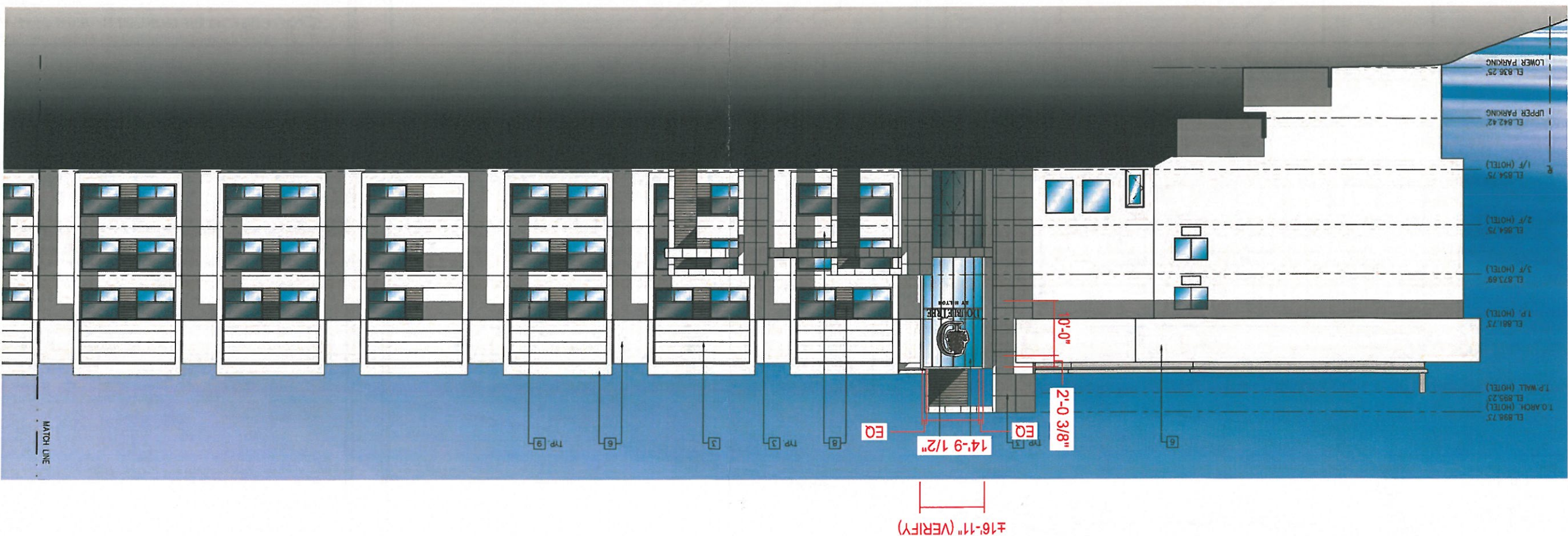
This is an original unpublished drawing created by Coast Sign, Inc. It is submitted for your personal use in conjunction with a project being planned for you by Coast Sign, Inc., and shall not be reproduced, used by or disclosed to any firm or corporation for any purpose whatsoever without written permission.

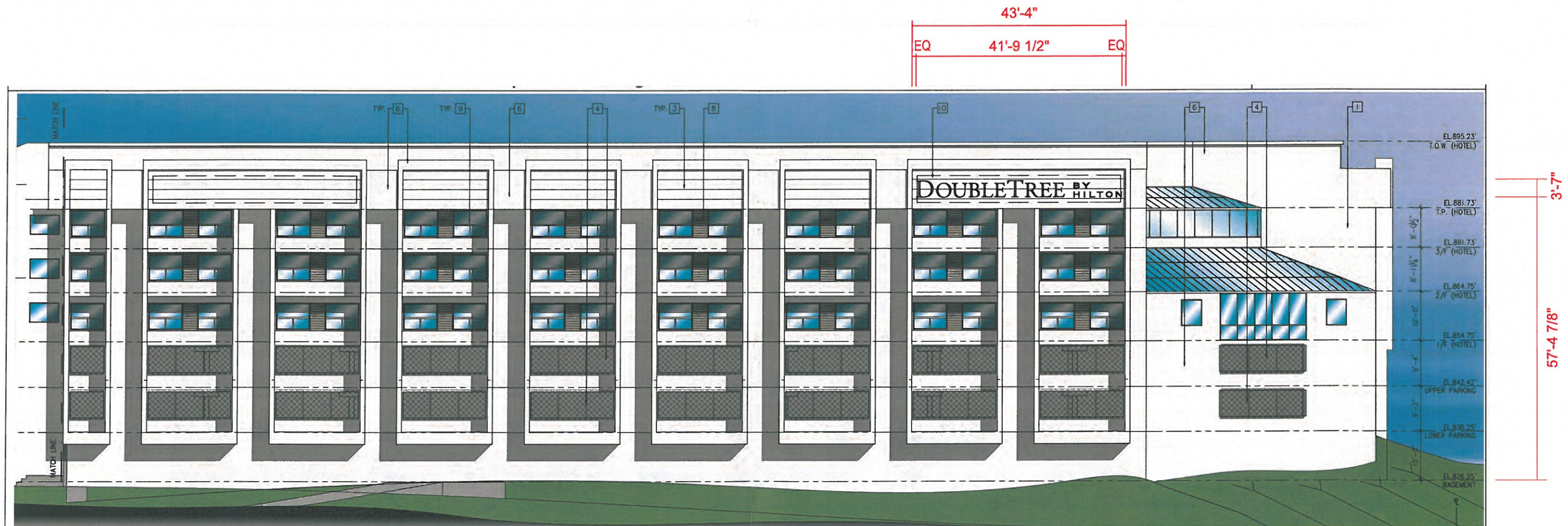
Request Number: **PRJ-**
File Location: W:\Hilton Double

PRJ-DBTR-110157

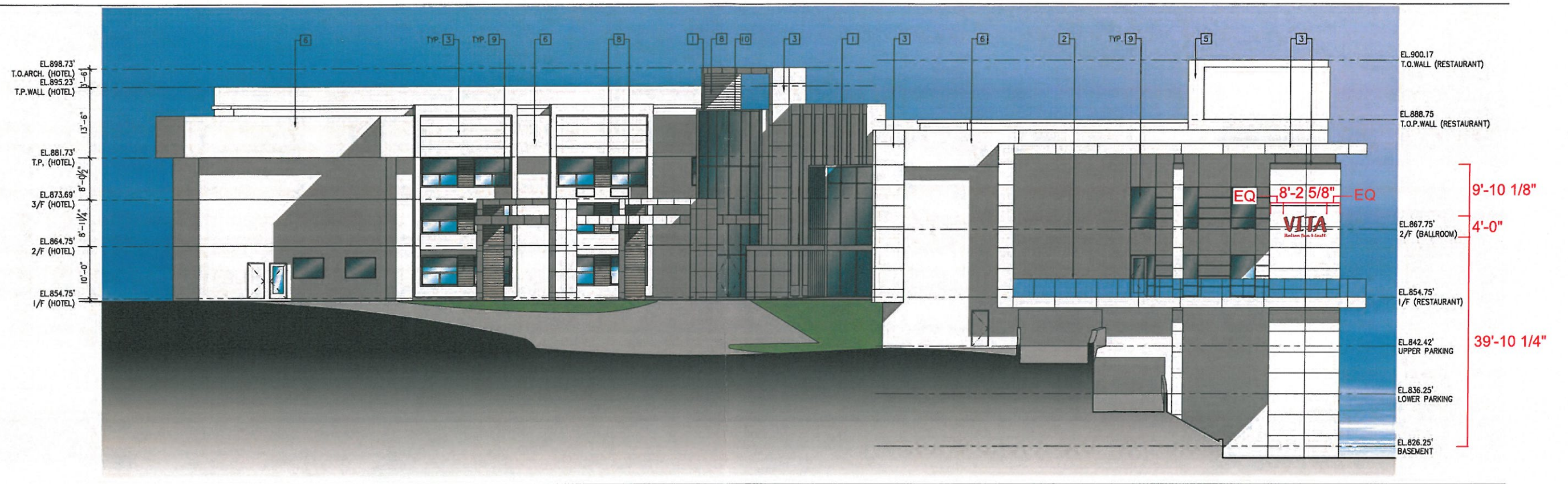


SOUTH ELEVATION @ ILLUMINATED CHANNEL LOGO



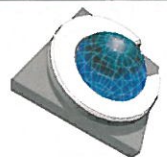


(B) NORTH ELEVATION @ ILLUMINATED CHANNEL LETTERS
 Scale: 1"=250"



EAST ELEVATION @ ILLUMINATED CHANNEL LOGO

Scale: 1"=250"



COAST SIGN
INCORPORATED
1500 West Embassy St. Anaheim, CA 92802
(714) 520-9144 FAX: (714) 520-5847

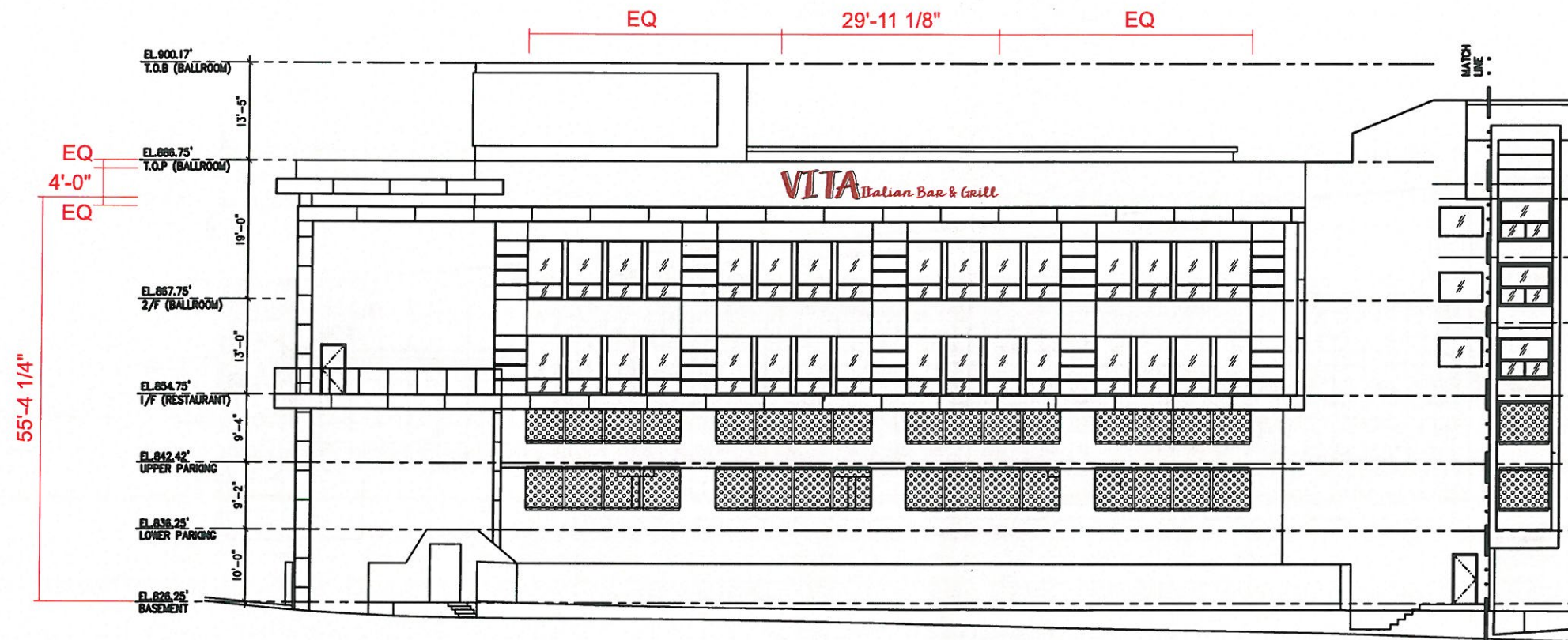
Date: 10-10-16
Project Name: HILTON DOUBLE TREE
Scale: AS NOTED
Address: 3101 W. Temple Avenue
Drawn: Nariel L.
City / State / Zip: Pomona, CA
Sales: Brian L.
Client Approval: _____
Date: _____

This is an original unpublished drawing created by Coast Sign, Inc. It is submitted for your personal use in conjunction with a project being planned for you by Coast Sign, Inc., And shall not be reproduced, used by or disclosed to any firm or corporation for any purpose whatsoever without written permission.

No.	Designer	Date	Revision Notes	No.	Designer	Date	Revision Notes
1				7			
2				8			
3				9			
4				10			
5				11			
6				12			

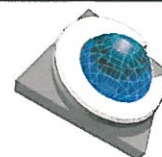
DESIGN DRAWING 4 of 12

Request Number:
PRJ-DBTR-110157
File Location:
W:\Hilton Double Tree\Art\Drawings\PRJ-DBTR-110157



NORTH ELEVATION @ ILLUMINATED CHANNEL LETTERS

Scale: 1"=250"



COAST SIGN
INCORPORATED
1500 West Embassy St. Anaheim, CA 92802
(714) 520-9144 FAX: (714) 520-5847

Date: 10-10-16 Project Name: HILTON DOUBLE TREE
Scale: AS NOTED Address: 3101 W. Temple Avenue
Drawn: Nariel L. City / State / Zip: Pomona, CA
Sales: Brian L. Client Approval: Date:

This is an original unpublished drawing created by Coast Sign, Inc. It is submitted for your personal use in conjunction with a project being planned for you by Coast Sign, Inc., And shall not be reproduced, used by or disclosed to any firm or corporation for any purpose whatsoever without written permission.

No.	Designer	Date	Revision Notes	No.	Designer	Date	Revision Notes
1				7			
2				8			
3				9			
4				10			
5				11			
6				12			

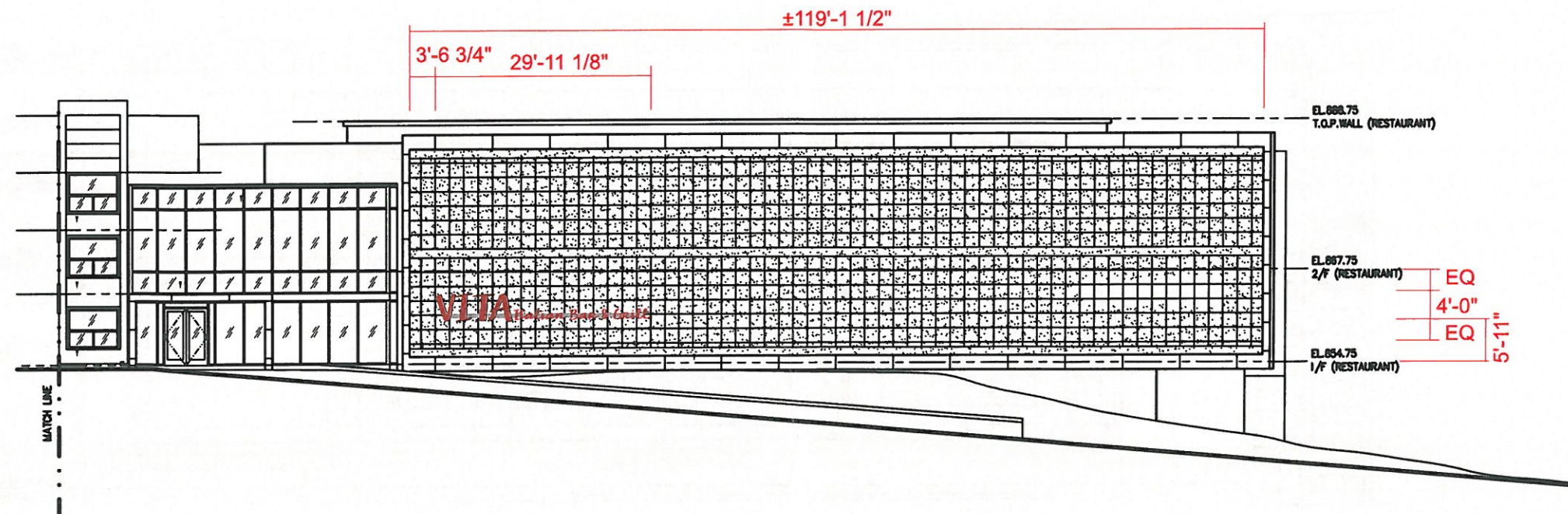
DESIGN DRAWING 5 of 12

Request Number:

PRJ-DBTR-110157

File Location:

W:\Hilton Double Tree\Art\Drawings\PRJ-DBTR-110157



SOUTH ELEVATION @ ILLUMINATED CHANNEL LETTERS ON RACEWAY

Scale: 1"=250"



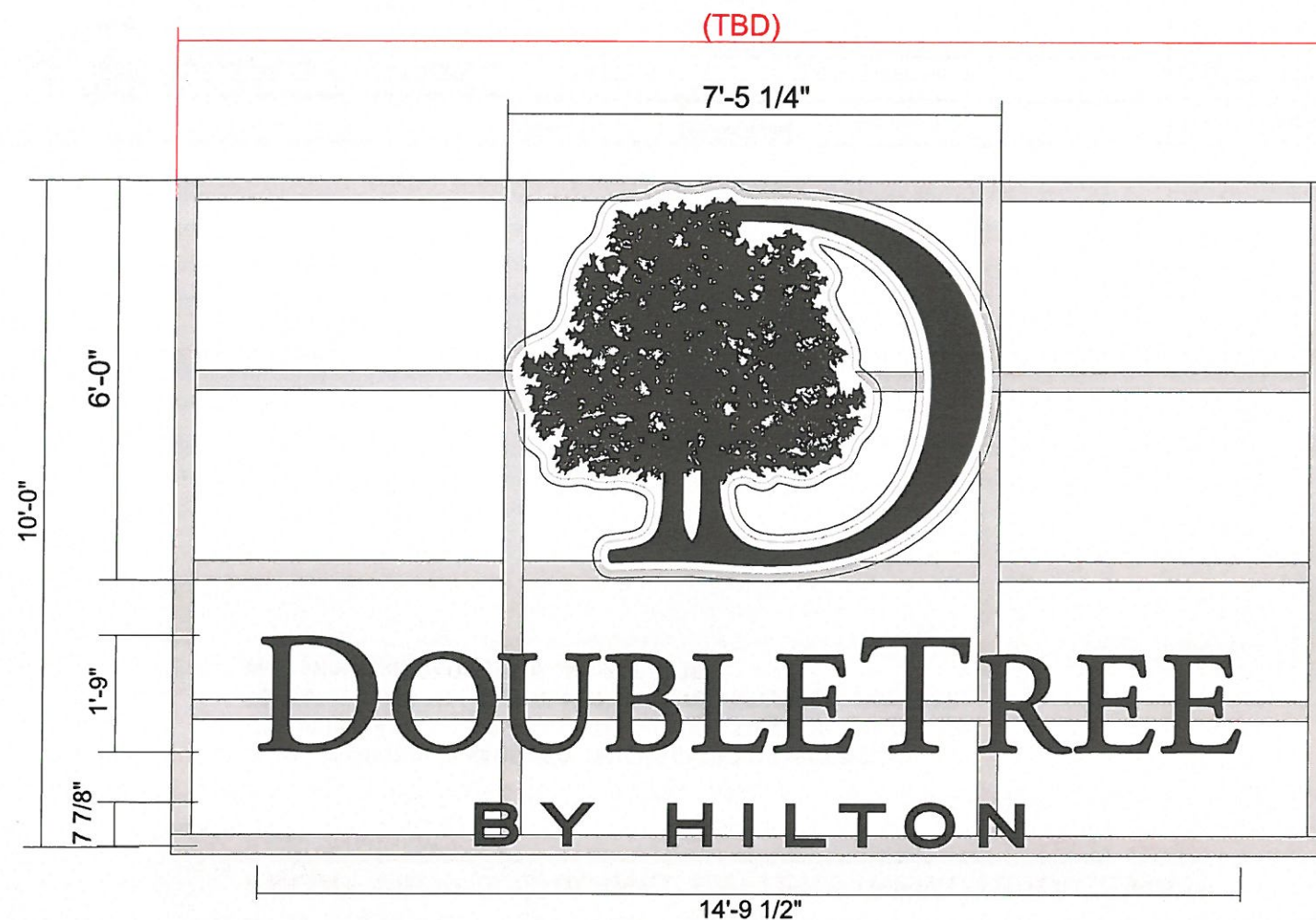
Date: 10-10-16	Project Name: HILTON DOUBLE TREE
Scale: AS NOTED	Address: 3101 W. Temple Avenue
Drawn: Nariel L.	City / State / Zip: Pomona, CA
Sales: Brian L.	Client Approval: _____ Date: _____

This is an original unpublished drawing created by Coast Sign, Inc. It is submitted for your personal use in conjunction with a project being planned for you by Coast Sign, Inc., And shall not be reproduced, used by or disclosed to any firm or corporation for any purpose whatsoever without written permission.

No.	Designer	Date	Revision Notes	No.	Designer	Date	Revision Notes
1				7			
2				8			
3				9			
4				10			
5				11			
6				12			

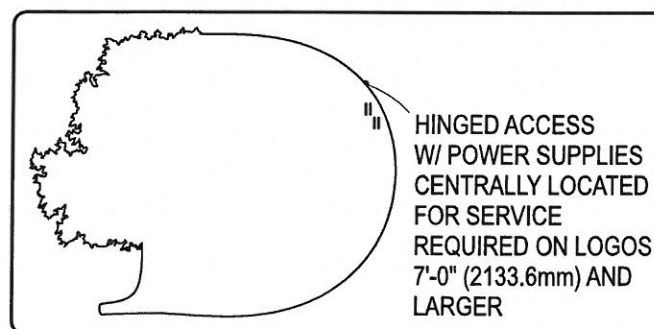
DESIGN DRAWING 6 of 12

Request Number:
PRJ-DBTR-110157
File Location:
W:\Hilton Double Tree\Art\Drawings\PRJ-DBTR-110157

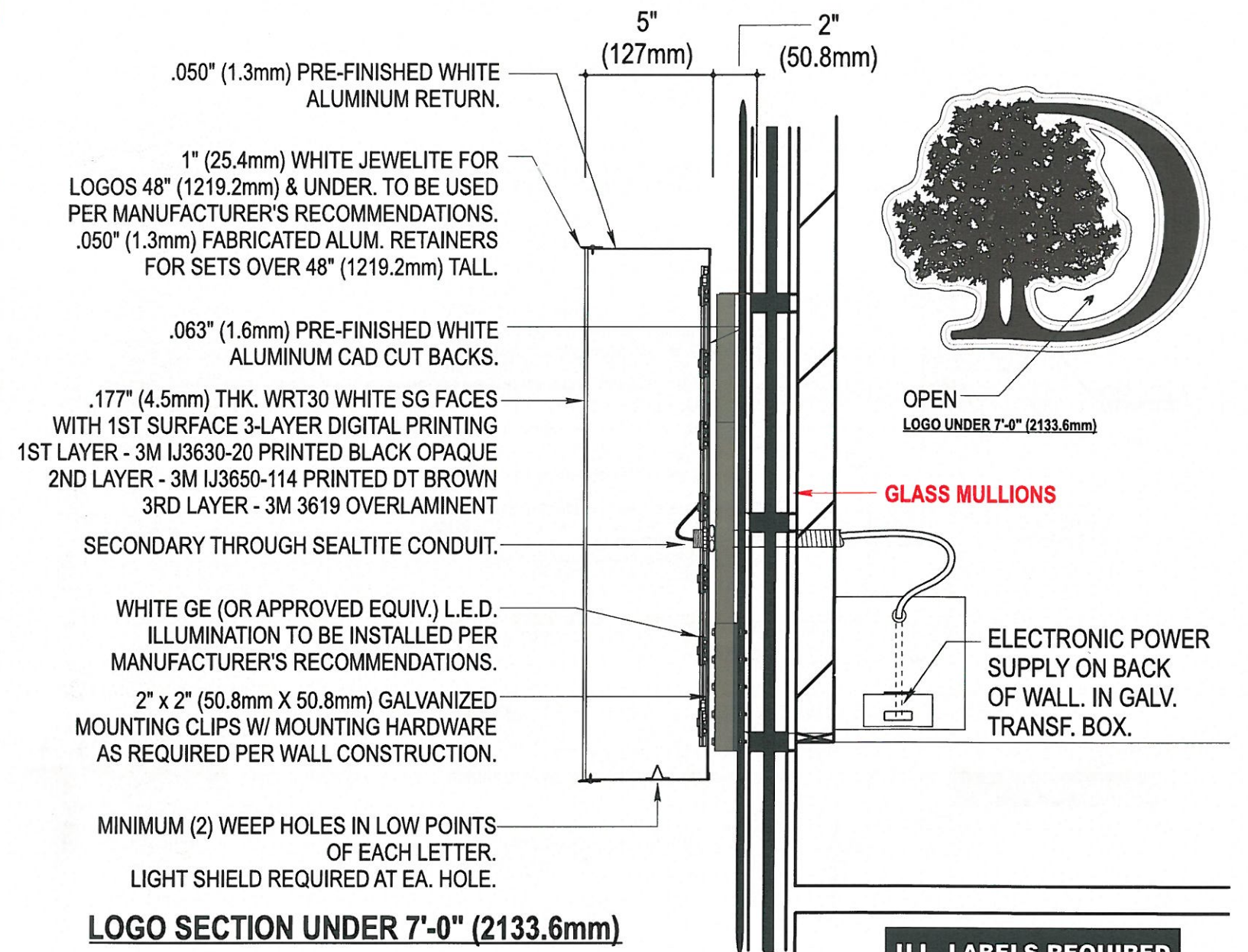


A FRONT VIEW @ CHANNEL LOGO & LETTERS
Scale: 3/8"=1'-0" **148.07 SQ. FT.**

ILLUMINATED AREA DIMENSION - USE THIS OUTLINE WHEN LOGO USES TRIMCAP & USE OUTLINE WHEN LOGO HAS FABRICATED ALUM. RETAINER.



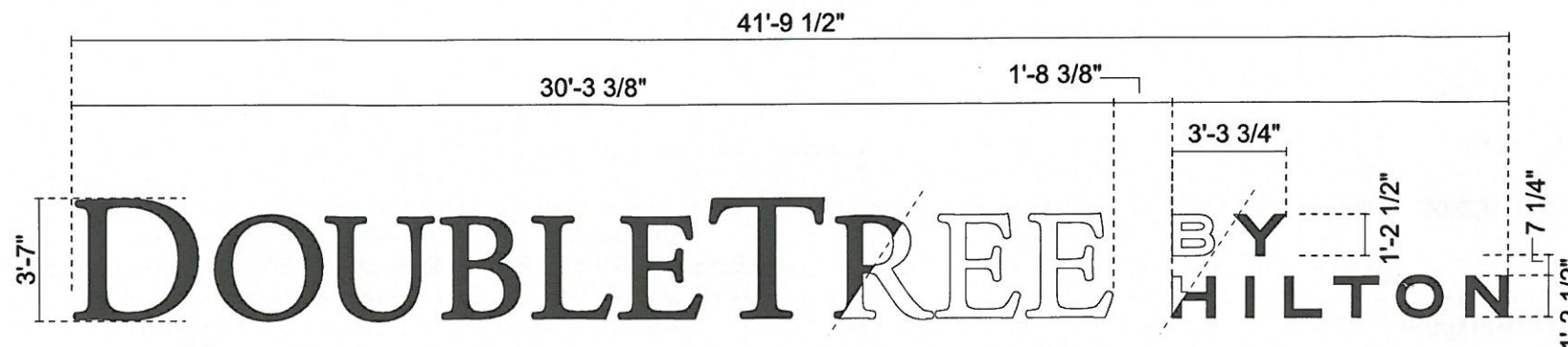
ALL PRINTING IS DONE UTILIZING
3M 1500v2 SOLVENT INKS



U.L. LABELS REQUIRED
INSTALL IN ACCORDANCE W/NEC

ALL ILLUMINATED SIGNAGE REQUIRE THE CLIENT'S ELECTRICIAN TO FURNISH & INSTALL A COMPLETE PHOTOCELL AND/OR TIME CLOCK TO ALLOW SIGNS TO OPERATE AT DESIGNATED INTERVALS. HOWEVER, SIGN SHALL NEVER OPERATE ON A 24/7 BASIS.

NOTE: SIGNAGE WILL BE MOUNTED ON GLASS MULLIONS. VERIFY MOUNTING METHOD.

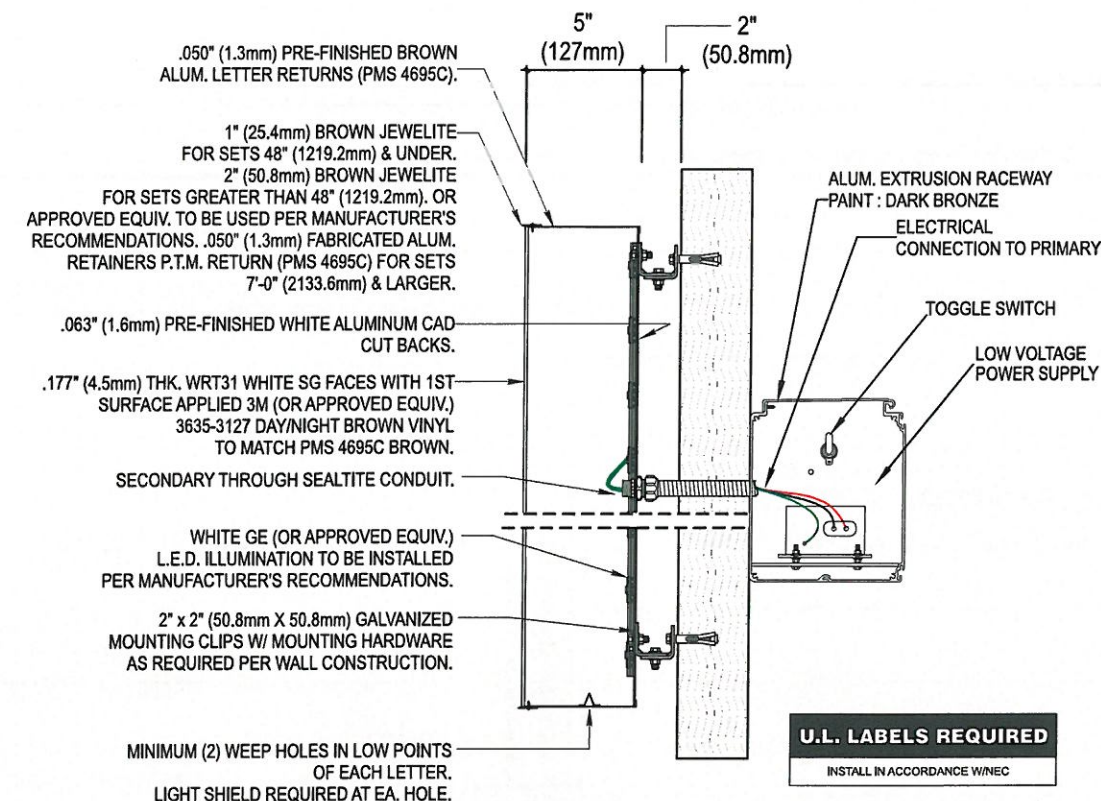


FRONT VIEW @ CHANNEL LETTERS (REMOTE RACEWAY)

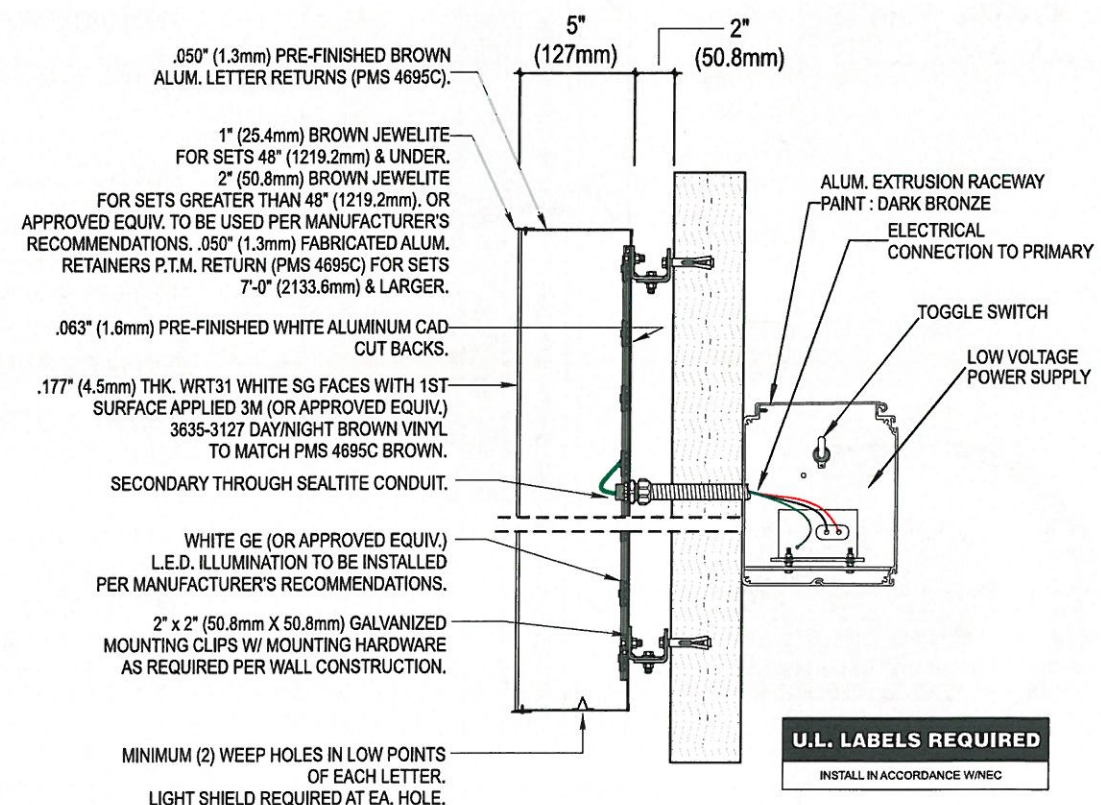
Scale: 3/16"=1'-0"

151.13 SQ. FT.

ALL ILLUMINATED SIGNAGE REQUIRE THE CLIENT'S ELECTRICIAN TO FURNISH & INSTALL A COMPLETE PHOTOCELL AND/OR TIME CLOCK TO ALLOW SIGNS TO OPERATE AT DESIGNATED INTERVALS. HOWEVER, SIGN SHALL NEVER OPERATE ON A 24/7 BASIS.



"DOUBLE TREE" LETTER SECTION (BROWN DAY/ WHITE NIGHT)



"BY HILTON" LETTER SECTION (BROWN DAY/ WHITE NIGHT)



Date:	10-10-16	Project Name:	HILTON DOUBLE TREE
Scale:	AS NOTED	Address:	3101 W. Temple Avenue
Drawn:	Nariel L.	City / State / Zip:	Pomona, CA
Sales:	Brian L.	Client Approval:	Date:

This is an original unpublished drawing created by Coast Sign, Inc. It is submitted for your personal use in conjunction with a project being planned for you by Coast Sign, Inc., And shall not be reproduced, used by or disclosed to any firm or corporation for any purpose whatsoever without written permission.

No.	Designer	Date	Revision Notes	No.	Designer	Date	Revision Notes
1				7			
2				8			
3				9			
4				10			
5				11			
6				12			

DESIGN DRAWING 8 of 12
Request Number: PRJ-DBTR-110157
File Location: W:\Hilton Double Tree\Art\Drawings\PRJ-DBTR-110157



FRONT VIEW @ ILLUMINATED CHANNEL LETTERS (REMOTE RACEWAY)

Scale: 3/4"=1'-0"

32.87 SQ. FT.

MANUFACTURE & INSTALL (1) NEW ILLUMINATED CHANNEL LETTERS

SPECIFICATIONS:

BACKS: .063" PRE-PAINTED WHITE ALUMINUM BACKS

RETURNS: .050" PRE-PAINTED BLACK ALUMINUM COIL

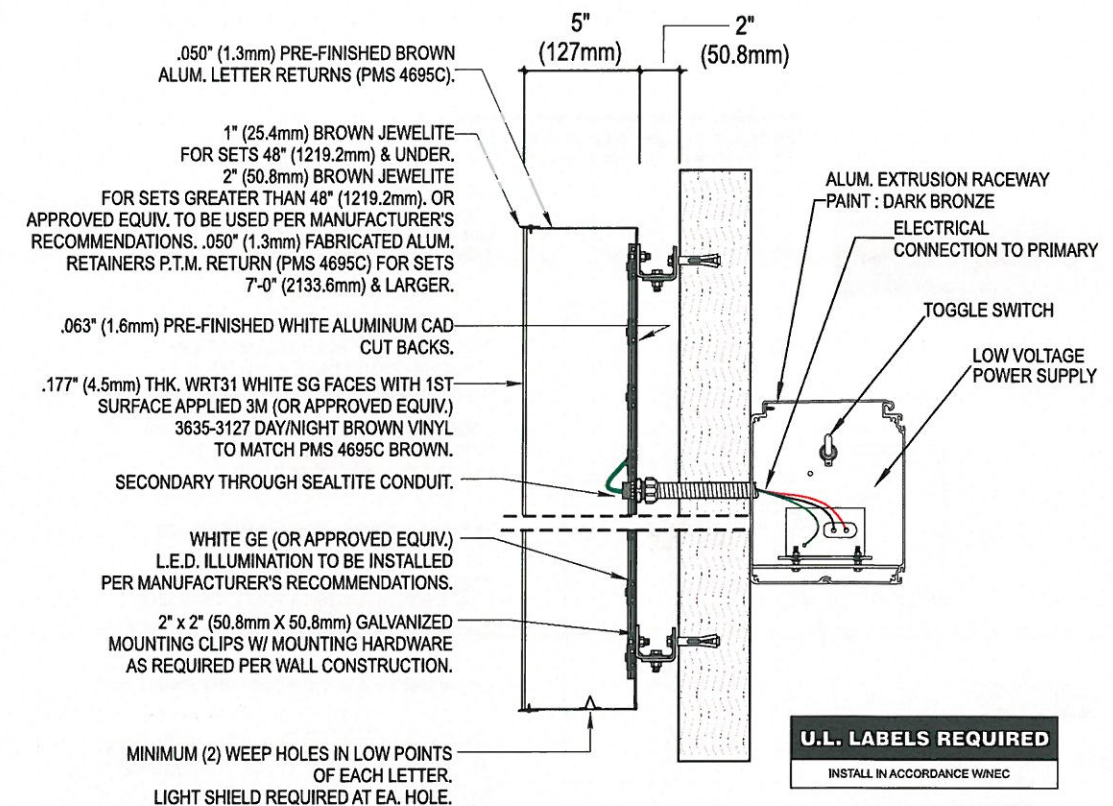
TRIMCAP: 1" BLACK TRIM CAP

FACE: .177" WHITE POLYCARBONATE WITH 1ST SURFACE VINYL COPY

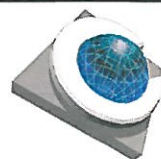
VINYL: VINYL TO MATCH "VITA" RED

ILLUMINATION: WHITE LED'S AND POWER SUPPLIES AS REQUIRED

ATTACHMENT: MOUNT 2" OFF WALL WITH MOUNTING CLIPS & 1/4" Ø OR 3/8" Ø HARDWARE



SECTION DETAILS



COAST SIGN
INCORPORATED
1500 West Embassy St. Anaheim, CA 92802
(714) 520-9144 FAX: (714) 520-5847

Date: 10-10-16 Project Name: HILTON DOUBLE TREE
Scale: AS NOTED Address: 3101 W. Temple Avenue
Drawn: Nariel L. City / State / Zip: Pomona, CA
Sales: Brian L. Client Approval: Date:

This is an original unpublished drawing created by Coast Sign, Inc. It is submitted for your personal use in conjunction with a project being planned for you by Coast Sign, Inc., And shall not be reproduced, used by or disclosed to any firm or corporation for any purpose whatsoever without written permission.

No.	Designer	Date	Revision Notes	No.	Designer	Date	Revision Notes
1				7			
2				8			
3				9			
4				10			
5				11			
6				12			

DESIGN DRAWING 9 of 12

Request Number:

PRJ-DBTR-110157

File Location:

W:\Hilton Double Tree\Art\Drawings\PRJ-DBTR-110157



FRONT VIEW @ ILLUMINATED CHANNEL LETTERS (REMOTE RACEWAY)

Scale: 1/4"=1'-0"

119.76 SQ. FT.

MANUFACTURE & INSTALL (2) NEW ILLUMINATED CHANNEL LETTERS

SPECIFICATIONS:

BACKS: .063" PRE-PAINTED WHITE ALUMINUM BACKS

RETURNS: .050" PRE-PAINTED BLACK ALUMINUM COIL

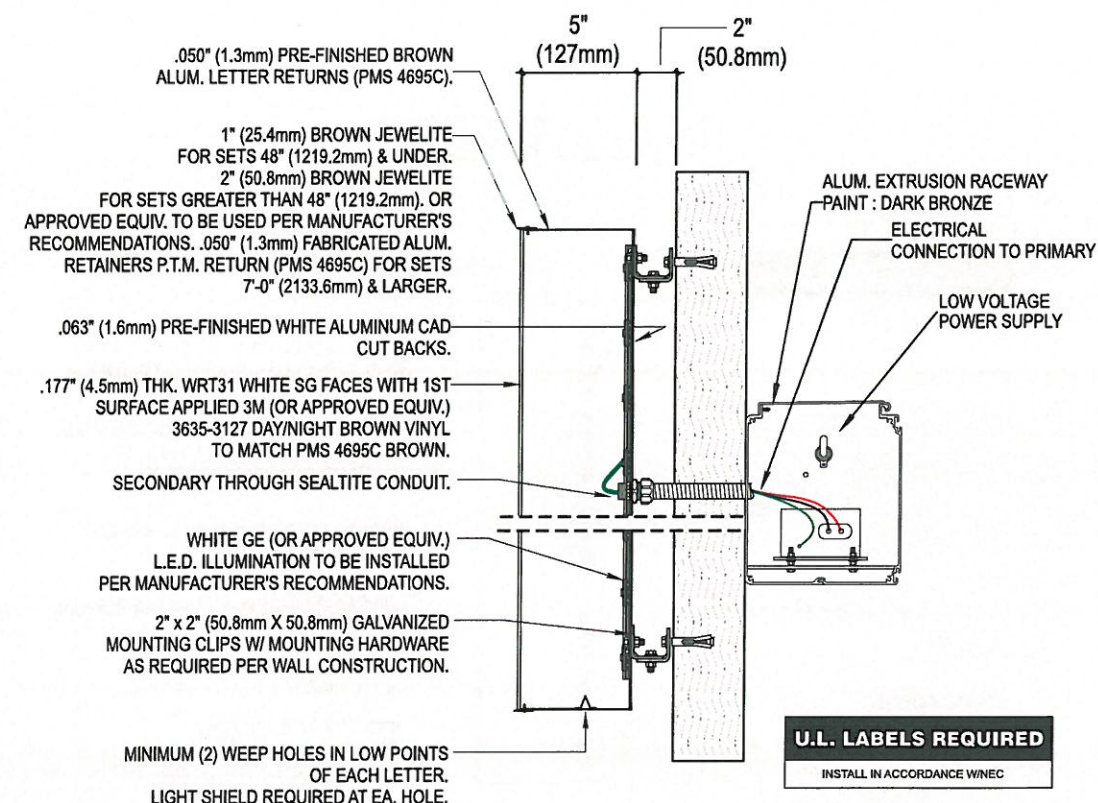
TRIMCAP: 1" BLACK TRIM CAP

FACE: .177" WHITE POLYCARBONATE WITH 1ST SURFACE VINYL COPY

VINYL: VINYL TO MATCH "VITA" RED

ILLUMINATION: WHITE LED'S AND POWER SUPPLIES AS REQUIRED

ATTACHMENT: MOUNT 2" OFF WALL WITH MOUNTING CLIPS & 1/4" Ø OR 3/8" Ø HARDWARE



SECTION DETAILS



Date:	10-10-16	Project Name:	HILTON DOUBLE TREE
Scale:	AS NOTED	Address:	3101 W. Temple Avenue
Drawn:	Nariel L.	City / State / Zip:	Pomona, CA
Sales:	Brian L.	Client Approval:	Date:

This is an original unpublished drawing created by Coast Sign, Inc. It is submitted for your personal use in conjunction with a project being planned for you by Coast Sign, Inc., And shall not be reproduced, used by or disclosed to any firm or corporation for any purpose whatsoever without written permission.

No.	Designer	Date	Revision Notes	No.	Designer	Date	Revision Notes
1				7			
2				8			
3				9			
4				10			
5				11			
6				12			

DESIGN DRAWING 10 of 12
Request Number: PRJ-DBTR-110157
File Location: W:\Hilton Double Tree\Art\Drawings\PRJ-DBTR-110157



FRONT VIEW @ ILLUMINATED CHANNEL LETTERS (REMOTE RACEWAY)
 Scale: 1/4"=1'-0" **119.76 SQ. FT.**

MANUFACTURE & INSTALL (2) NEW ILLUMINATED CHANNEL LETTERS

SPECIFICATIONS:

BACKS: .063" PRE-PAINTED WHITE ALUMINUM BACKS

RETURNS: .050" PRE-PAINTED BLACK ALUMINUM COIL

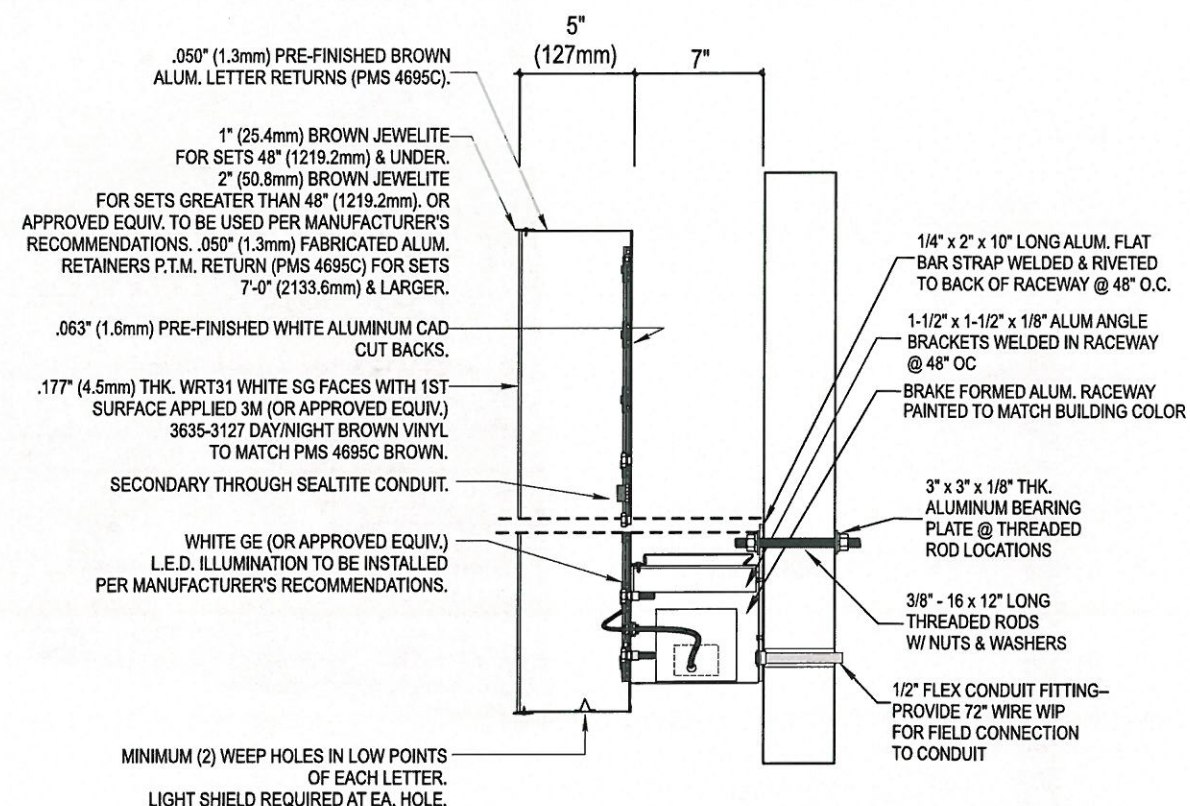
TRIMCAP: 1" BLACK TRIM CAP

FACE: .177" WHITE POLYCARBONATE WITH 1ST SURFACE VINYL COPY

VINYL: VINYL TO MATCH "VITA" RED

ILLUMINATION: WHITE LED'S AND POWER SUPPLIES AS REQUIRED

ATTACHMENT: MOUNT 2" OFF WALL WITH MOUNTING CLIPS & 1/4" Ø OR 3/8" Ø HARDWARE



SECTION DETAILS

U.L. LABELS REQUIRED

INSTALL IN ACCORDANCE W/NEC



Date:	10-10-16	Project Name:	HILTON DOUBLE TREE
Scale:	AS NOTED	Address:	3101 W. Temple Avenue
Drawn:	Nariel L.	City / State / Zip:	Pomona, CA
Sales:	Brian L.	Client Approval:	Date:

This is an original unpublished drawing created by Coast Sign, Inc. It is submitted for your personal use in conjunction with a project being planned for you by Coast Sign, Inc., And shall not be reproduced, used by or disclosed to any firm or corporation for any purpose whatsoever without written permission.

No.	Designer	Date	Revision Notes	No.	Designer	Date	Revision Notes
1				7			
2				8			
3				9			
4				10			
5				11			
6				12			

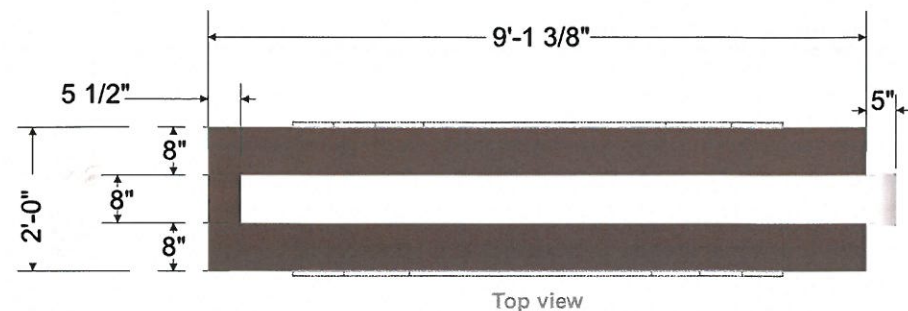
DESIGN DRAWING 11 of 12

Request Number:

PRJ-DBTR-110157

File Location:

W:\Hilton Double Tree\Art\Drawings\PRJ-DBTR-110157

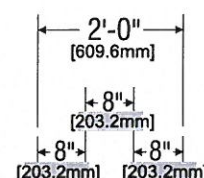


ALUMINUM FABRICATED D/F CABINET
PAINTED TO MATCH PMS 4695C BROWN.

POLYCARBONATE SURROUND
WHITE POLYCARBONATE
INTERNALLY ILLUMINATE W/ WHITE GE POWER STRIP

.125" (3.2mm) ALUM. FACE W/ ROUTED GRAPHICS
Logo & All Copy:
3/4" Clear acrylic w/ 1/2" projection, Second Surface Diffuser
First Surface Print.
Edges to be flame polished.

RESTAURANT COPY/LOGO .125" (3.2mm) ALUM. FACE
W/ ROUTED COPY
BACKED WITH .177" WHITE ACYLIC



End View

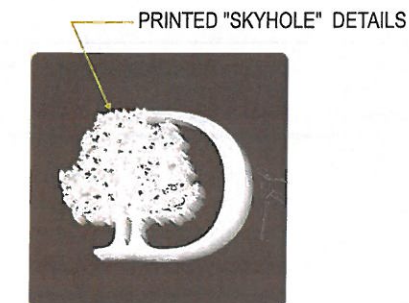


MAIN CABINET INTERNALLY ILLUMINATED W/ GE TETRA DS POWER STRIP

ALUMINUM REVEALS PAINTED TO MATCH
PMS 583C GREEN.

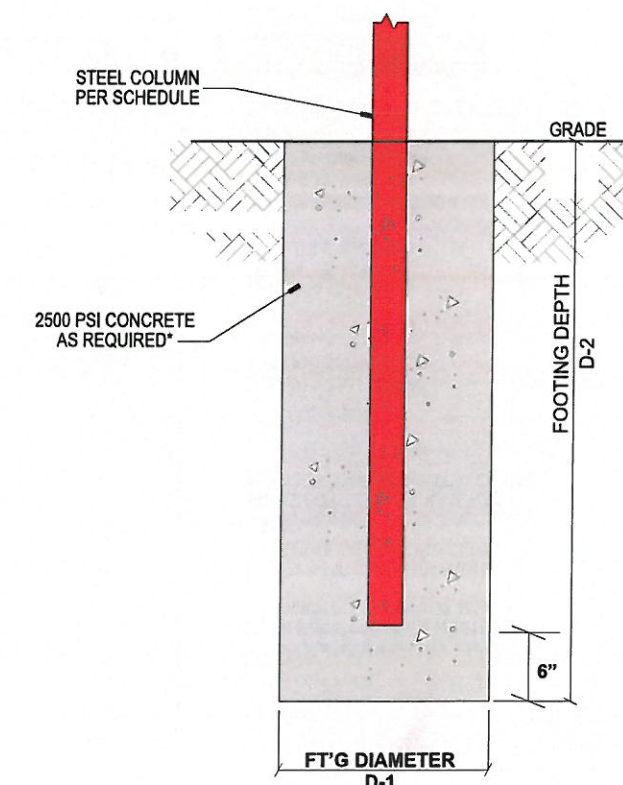
ALUMINUM FABRICATED BASE
PAINTED TO MATCH PMS 4695C BROWN.

ALL ILLUMINATED SIGNAGE REQUIRE THE CLIENT'S ELECTRICIAN
TO FURNISH & INSTALL. A COMPLETE PHOTOCELL AND/OR TIME CLOCK
TO ALLOW SIGNS TO OPERATE AT DESIGNATED INTERVALS. HOWEVER,
SIGN SHALL NEVER OPERATE ON A 24/7 BASIS.



1ST SURFACE 3-LAYER DIGITAL PRINTING
1ST LAYER - 3M IJ3630-20 PRINTED BLACK OPAQUE
2ND LAYER - 3M IJ3650-114 PRINTED DT BROWN
3RD LAYER - 3M 3619 OVERLAMINANT

ALL PRINTING IS DONE UTILIZING
3M 1500v2 SOLVENT INKS



COLUMN SIZE	FT'G DIAM. D-1	FT'G DEPTH D-2
HSS 5x5x 3/16" Tube	2'-0"	9'-6"

FOUNDATION DETAIL

TALLER END TO FACE STREET
(ILLUMINATED ACCENT TO FACE PROPERTY)



FRONT VIEW @ CUSTOM D/F MONUMENT SIGN @ 11'-8"

Scale: 3/8"=1'-0"

TALLER END TO FACE STREET
(ILLUMINATED ACCENT TO FACE PROPERTY)



Date: 10-10-16	Project Name: HILTON DOUBLE TREE
Scale: AS NOTED	Address: 3101 W. Temple Avenue
Drawn: Nariel L.	City / State / Zip: Pomona, CA
Sales: Brian L.	Client Approval: Date:

This is an original unpublished drawing created by Coast Sign, Inc. It is submitted for your personal use in conjunction with a project being planned for you by Coast Sign, Inc., And shall not be reproduced, used by or disclosed to any firm or corporation for any purpose whatsoever without written permission.

No.	Designer	Date	Revision Notes	No.	Designer	Date	Revision Notes
1				7			
2				8			
3				9			
4				10			
5				11			
6				12			

DESIGN DRAWING 12 of 12
Request Number: PRJ-DBTR-110157
File Location: W:\Hilton Double Tree\Art\Drawings\PRJ-DBTR-110157