

**MEMORANDUM OF UNDERSTANDING FOR HAZARD FUELS REDUCTION
PROVIDED BY THE
CONSOLIDATED FIRE PROTECTION DISTRICT OF LOS ANGELES COUNTY
TO THE CITY OF POMONA**

The purpose of this Memorandum of Understanding (MOU) is to authorize the Consolidated Fire Protection District of Los Angeles County (Fire District) to perform work to reduce hazardous fuels in the City of Pomona (City) Rio Rancho Trails and Creek Restoration Project (Project). This Memorandum of Understanding (MOU) shall become effective on the last date signed below.

1. This MOU is authorized under County Charter, Sections 2.20.020, 2.20.040, and 2.20.080.
2. The City of Pomona has been annexed to the Fire District since July 28, 1994, and it is in the best interests of the City and the Fire District for public health and fire safety, erosion control, and trail and creek reforestation for the Fire District to perform the work described herein.
3. The City authorizes the Fire District to perform work to reduce the hazardous fuels presented by dead, dying, and diseased trees, invasive and non-native vegetation, and accumulated overgrowth of native vegetation within the City's Rio Rancho Trails and Creek Project area (Exhibit A) for the purposes of enhancing public health and fire safety, erosion control, and trail and creek reforestation work in the City as provided herein. The Project area encompasses approximately 6 acres.
4. The Fire District, at no cost to the City, agrees to perform work to reduce the hazardous fuels presented by dead, dying, and diseased trees, removal of invasive and non-native vegetation and reduce an over accumulation native vegetation within the Project area for the purposes of enhancing public health and fire safety, erosion control, and trail and creek reforestation work in the City.
5. The Fire District will make its best effort to not operate heavy equipment off preexisting roads or trails and to avoid undisturbed areas.
6. Services to be provided by Fire District to City include:
 - a. Selective thinning and removal of standing dead, dying and diseased trees, removal of invasive and non-native vegetation, and thinning of understory native vegetation over an area of approximately 6 acres.
 - b. Cut trees and vegetation may be chipped on site and/or bucked and removed from the site.

- c. Selective thinning of native vegetation in the form of a mosaic pattern to break up horizontal and vertical fuel continuity. Cut material may be chipped on site and/or bucked and removed from the site.
 - d. The chipped material left on site, shall be disbursed and spread to a chip depth layer of 2-4 inches. Chipped material shall be kept away from the base of residual trees and away from the creek/creek bank.
 - e. Cut stumps should be left uncovered by any slash and/or chipped material and be visible for follow-up treatment as needed.
7. For prevention of stump sprouting, the City may elect at their discretion to treat the cut stumps with an appropriate herbicide as determined and applied by the City.
8. The City agrees to save, indemnify, defend and hold harmless the Fire District from any and all liability, claims, suits, actions, arbitration proceedings, administrative proceedings, regulatory proceedings, losses, expenses, or any injury or damage of any kind whatsoever, whether actual, alleged or threatened, actual attorney fees, court costs, interest, defense costs or arising out of, the performance of this MOU.
9. Priorities and timing of services performed by the Fire District pursuant to this MOU is at the sole discretion of the Fire District.
10. The term of services to be provided under this MOU shall be one 5-year term.
11. This MOU may be terminated by either party upon giving thirty (30) days written notice to the party.

LINDA LOWRY, CITY MANAGER
CITY OF POMONA

Date

DARYL L. OSBY, FIRE CHIEF
CONSOLIDATED FIRE PROTECTION DISTRICT

Date

MOU-Pomona

EXHIBIT A (PROJECT AREA - PURPLE BOUNDARY)

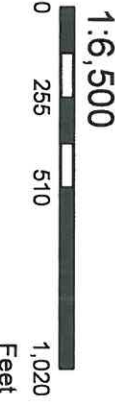


Source: Esri, DigitalGlobe, GeoEye, Earthstar Geographics, CNES/Airbus DS, USDA, USGS, AeroGRID, IGN, and the GIS User Community

Rio Rancho Open Space HFR Project, Pomona Ownership Map

Legend

- Parcels of Project Area
- Parcels
- Pomona City Boundary

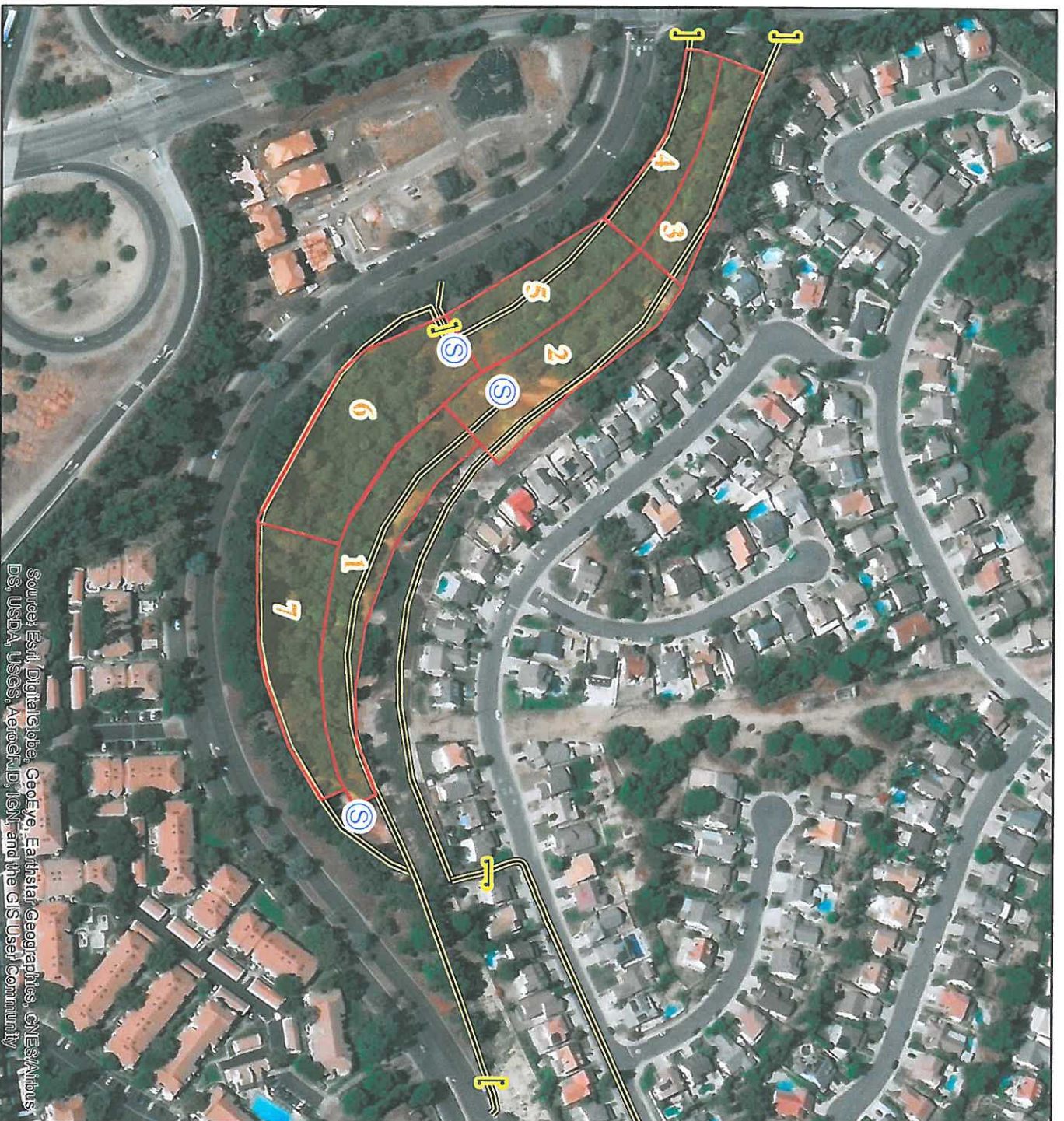


Thomas Bros. Ref.
LACO TB 640 - G6



VMU
1/18/18
NAD83

EXHIBIT A (TREATMENT AREA - RED BOUNDARY)



Source: Esri, DigitalGlobe, GeoEye, Earthstar Geographics, CNES/Airbus DS, USDA, USGS, AeroGRID, IGN, and the GIS User Community

Rio Rancho Open Space HFR Project, Pomona Treatment Map

Legend

- City Gate ("L" lock)
- Staging
- Access Roads
- Treatment Area (approx. 6 acres)

Treatment areas will/may include:

- Handcrew Treatment
- Chainsaw
- Chipping
- Log and Scatter
- Removal
- Fuels Reduction Treatment
- Whole Tree Removals
- Thinning/Release
- Fuel Continuity Reduction

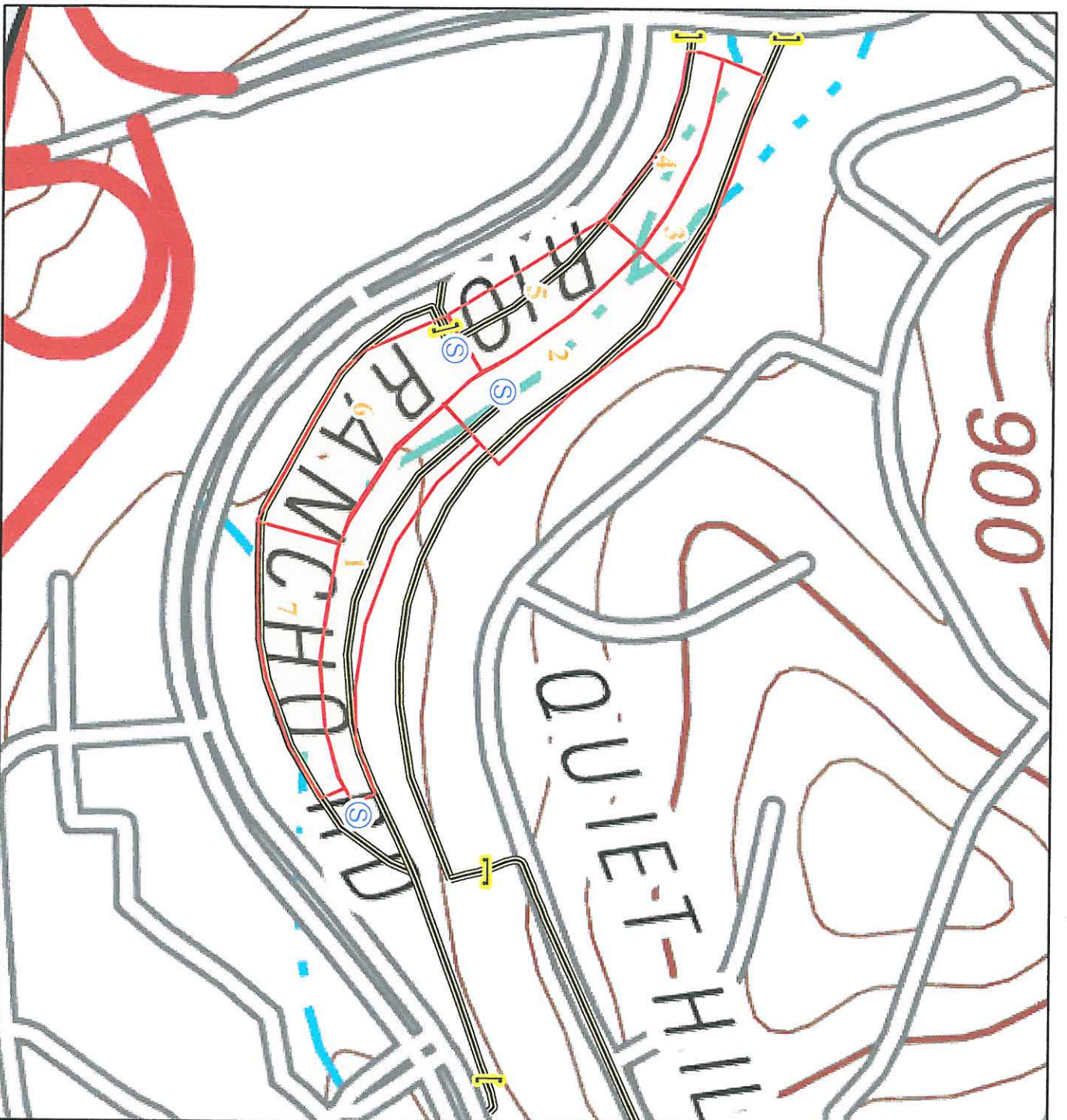


1:3,134



VMU
1/18/18
NAD83

EXHIBIT A
(TREATMENT AREA - RED BOUNDARY)



**Rio Rancho Open Space
HFR Project, Pomona
Treatment Map**

Legend

- City Gate ("L" lock)
- Staging
- Access Roads
- Treatment Area (approx. 6 acres)

Treatment areas will/may include:

- Handcrew Treatment
 - Chainsaw
 - Chipping
 - Lop and Scatter
 - Removal
- Fuels Reduction Treatment
 - Whole Tree Removals
 - Thinning/Release
 - Fuel Continuity Reduction



1:3,134
0 115 230 460
Feet



VMU
1/18/18
NAD83