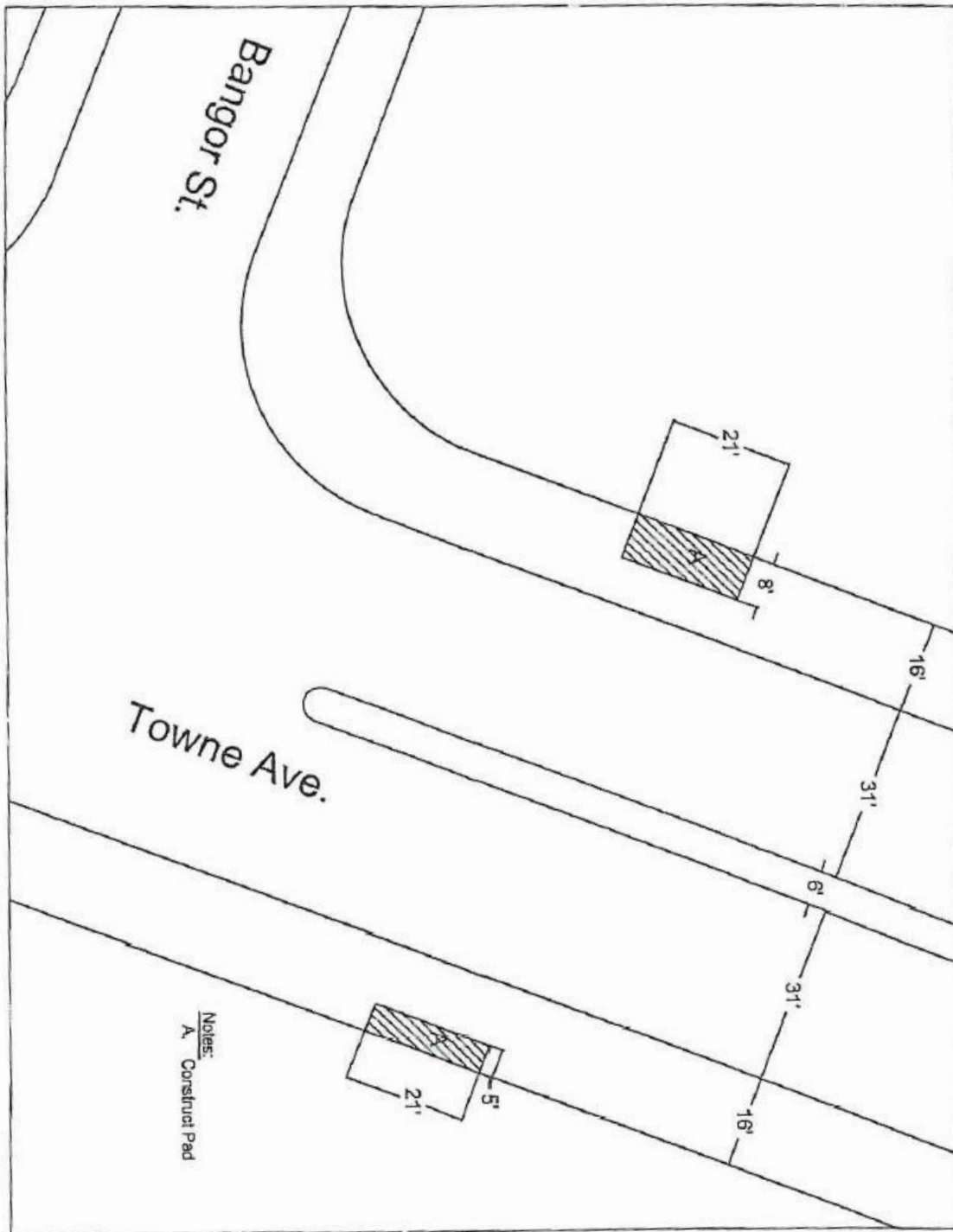


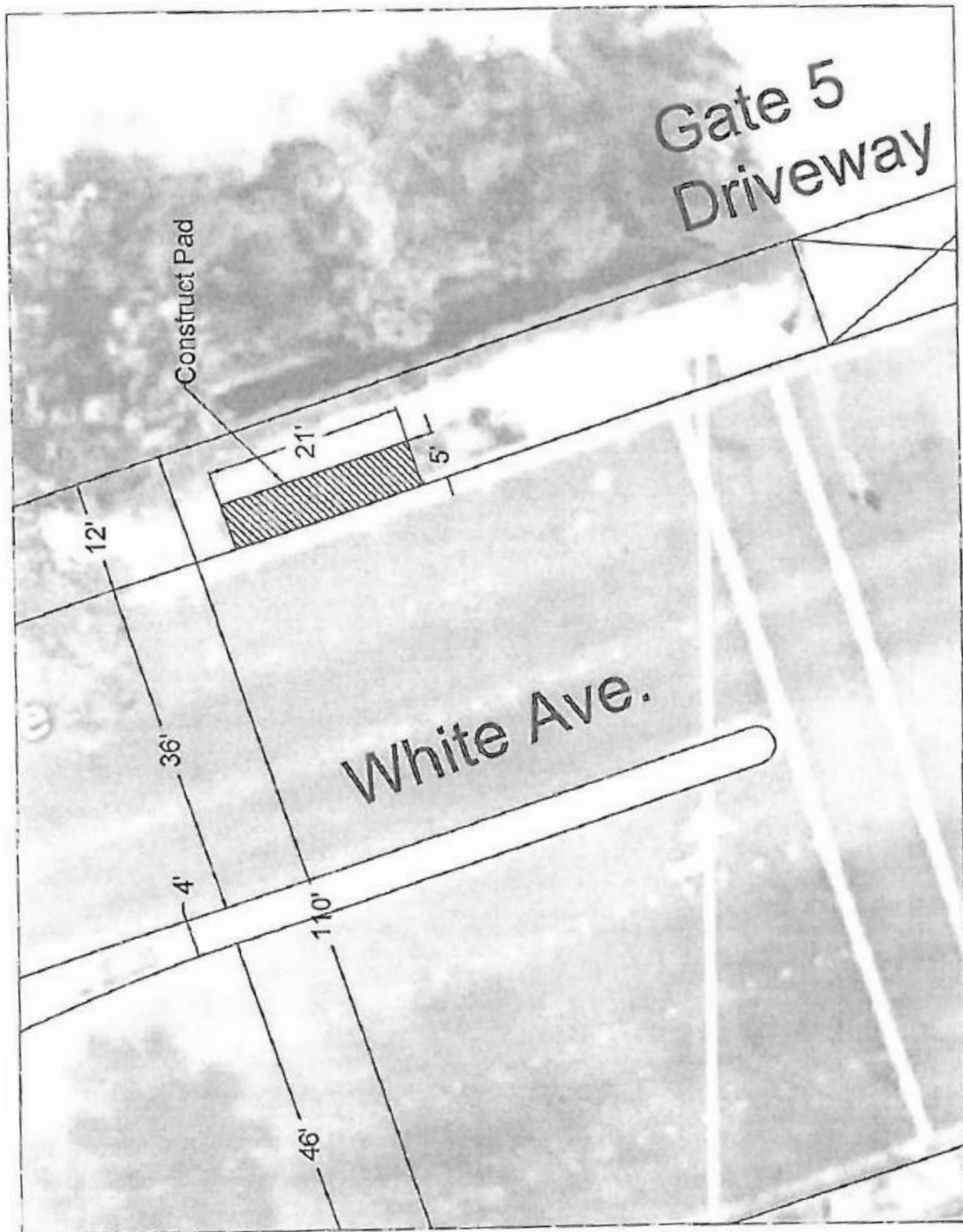
**Bus Shelter Concrete Pad Locations**

- |  |                         |
|--|-------------------------|
| 1. Towne Avenue @ Bangor Street          | 2(Two) Bus Shelter Pads |
| 2. White Avenue @ Fairplex Gate #5       | 1(One) Bus Shelter Pad  |
| 3. Holt Avenue @ East End Avenue         | 1(One) Bus Shelter Pad  |
| 4. Corporate Center Drive                | 1(One) Bus Shelter Pad  |
| 5. Village Loop Road @ Village Loop Road | 2(Two) Bus Shelter Pads |

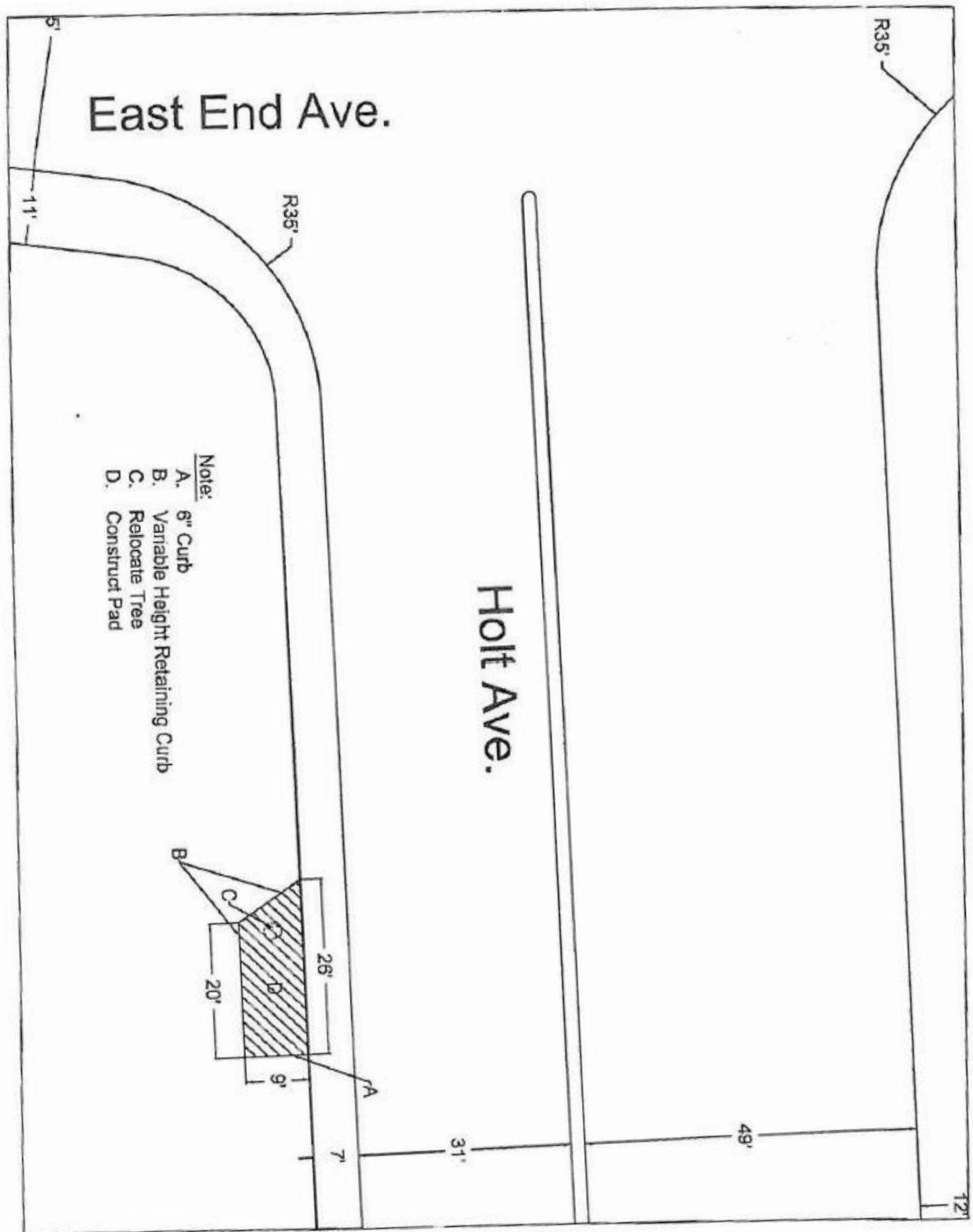
1. Towne Avenue @ Bangor Street  
2(Two) Bus Shelter Pads



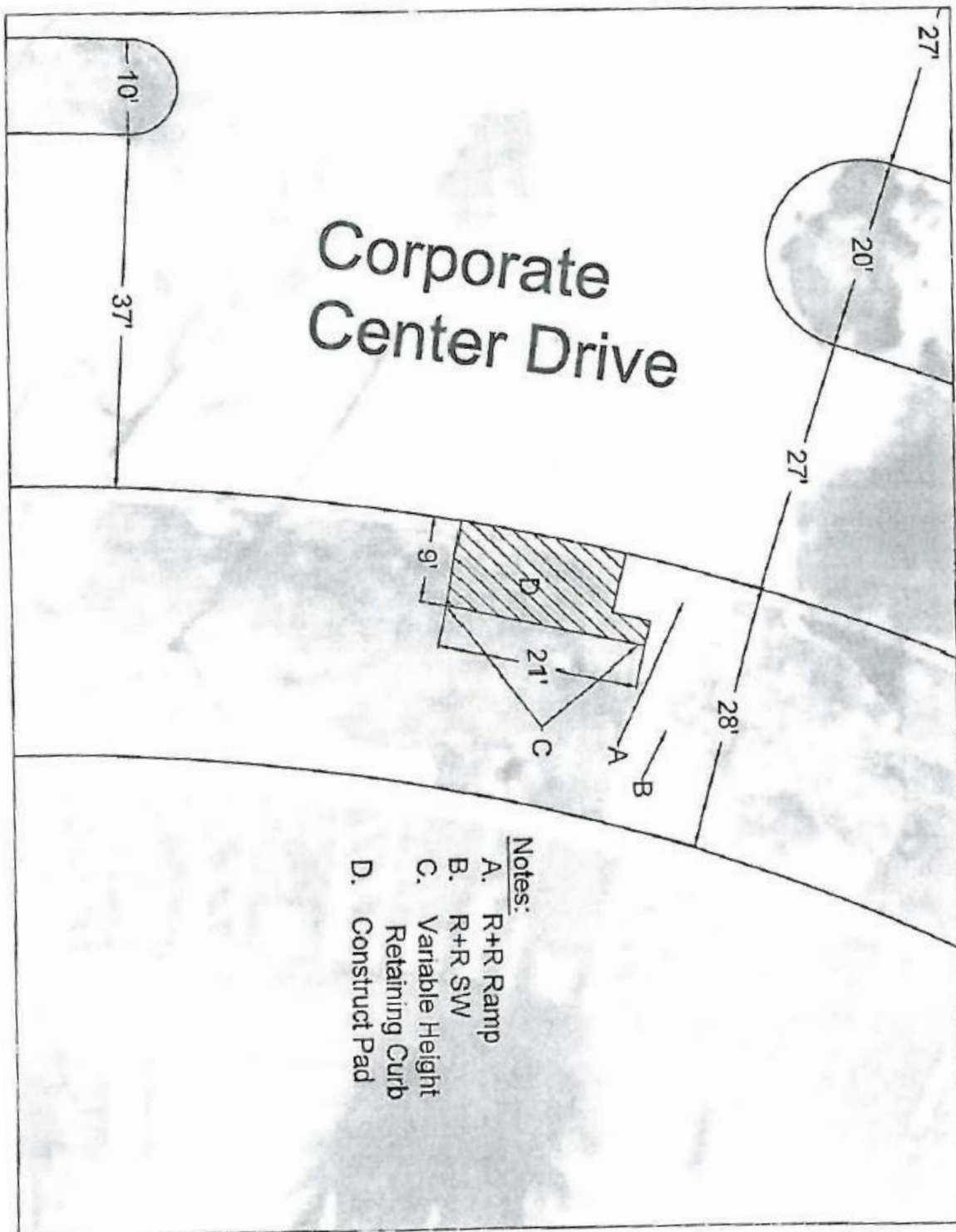
2. White Avenue @ Fairplex Gate #5  
1(One) Bus Shelter Pad



3. Holt Avenue @ East End Avenue  
1(One) Bus Shelter Pad



4. Corporate Center Drive  
1(One) Bus Shelter Pad



5. Village Loop Road @ Village Loop Road  
2(Two) Bus Shelter Pads

