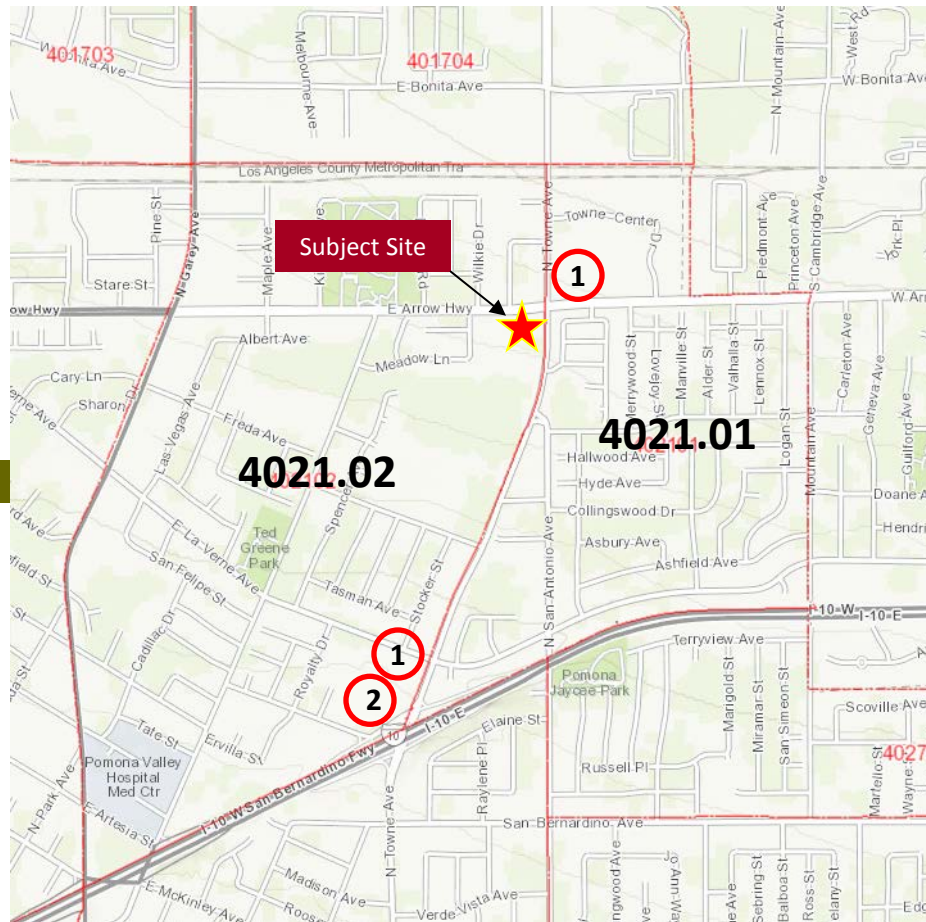


Exhibit of Off-Sale Licenses & Census Tracts



Census Tract 4021.02

1. 588 E. La Verne Ave – Pomona Liquor: Type-21
2. 2055 N. Towne Ave – 7Eleven: Type-20

Census Tract 4021.01

1. 2510 N. Towne Ave – Towne Arco: Type-20

COMMON ABC LICENSE TYPES AND THEIR BASIC PRIVILEGES

LICENSE TYPE	DESCRIPTION
01	BEER MANUFACTURER - (Large Brewery) Authorizes the sale of beer to any person holding a license authorizing the sale of beer, and to consumers for consumption on or off the manufacturer's licensed premises. Without any additional licenses, may sell beer and wine, regardless of source, to consumers for consumption at a bona fide public eating place on the manufacturer's licensed premises or at a bona fide eating place contiguous to the manufacturer's licensed premises. May conduct beer tastings under specified conditions (Section 23357.3). Minors are allowed on the premises.
02	WINEGROWER - (Winery) Authorizes the sale of wine and brandy to any person holding a license authorizing the sale of wine and brandy, and to consumers for consumption off the premises where sold. Authorizes the sale of all wines and brandies, regardless of source, to consumers for consumption on the premises in a bona fide eating place that is located on the licensed premises or on premises owned by the licensee that are contiguous to the licensed premises and operated by and for the licensee. May possess wine and brandy for use in the preparation of food and beverage to be consumed at the bona fide eating place. May conduct winetastings under prescribed conditions (Section 23356.1; Rule 53). Minors are allowed on the premises.
20	OFF SALE BEER & WINE - (Package Store) Authorizes the sale of beer and wine for consumption off the premises where sold. Minors are allowed on the premises.
21	OFF SALE GENERAL - (Package Store) Authorizes the sale of beer, wine and distilled spirits for consumption off the premises where sold. Minors are allowed on the premises.
23	SMALL BEER MANUFACTURER - (Brew Pub or Micro-brewery) Authorizes the same privileges and restrictions as a Type 01. A brewpub is typically a very small brewery with a restaurant. A micro-brewery is a small-scale brewery operation that typically is dedicated solely to the production of specialty beers, although some do have a restaurant or pub on their manufacturing plant.
40	ON SALE BEER - (Bar, Tavern) Authorizes the sale of beer for consumption on or off the premises where sold. No wine or distilled spirits may be on the premises. Full meals are not required; however, sandwiches or snacks must be available. Minors are allowed on the premises.
41	ON SALE BEER & WINE – EATING PLACE - (Restaurant) Authorizes the sale of beer and wine for consumption on or off the premises where sold. Distilled spirits may not be on the premises (except brandy, rum, or liqueurs for use solely for cooking purposes). Must operate and maintain the licensed premises as a bona fide eating place. Must maintain suitable kitchen facilities, and must make actual and substantial sales of meals for consumption on the premises. Minors are allowed on the premises.
42	ON SALE BEER & WINE – PUBLIC PREMISES - (Bar, Tavern) Authorizes the sale of beer and wine for consumption on or off the premises where sold. No distilled spirits may be on the premises. Minors are not allowed to enter and remain (see Section 25663.5 for exception, musicians). Food service is not required.
47	ON SALE GENERAL – EATING PLACE - (Restaurant) Authorizes the sale of beer, wine and distilled spirits for consumption on the licenses premises. Authorizes the sale of beer and wine for consumption off the licenses premises. Must operate and maintain the licensed premises as a bona fide eating place. Must maintain suitable kitchen facilities, and must make actual and substantial sales of meals for consumption on the premises. Minors are allowed on the premises.
48	ON SALE GENERAL – PUBLIC PREMISES - (Bar, Night Club) Authorizes the sale of beer, wine and distilled spirits for consumption on the premises where sold. Authorizes the sale of beer and wine for consumption off the premises where sold. Minors are not allowed to enter and remain (see Section 25663.5 for exception, musicians). Food service is not required.
49	ON SALE GENERAL – SEASONAL - Authorizes the same privileges and restrictions as provided for a Type 47 license except it is issued for a specific season. Inclusive dates of operation are listed on the license certificate.

