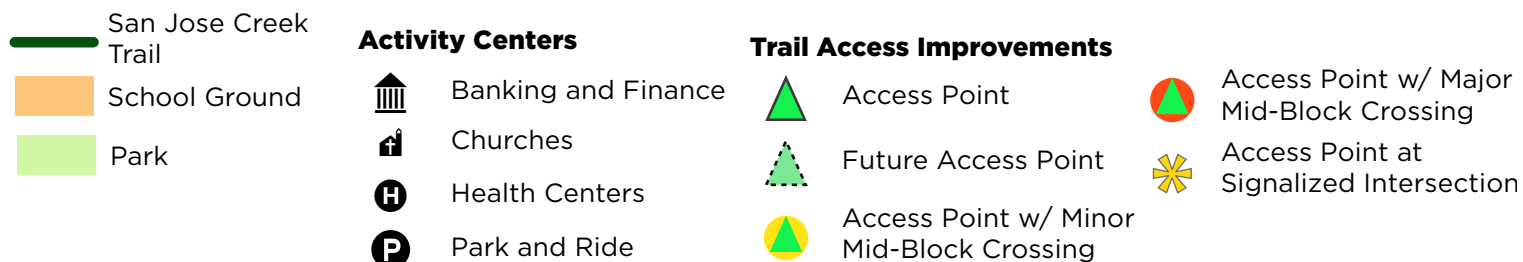
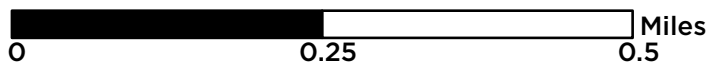
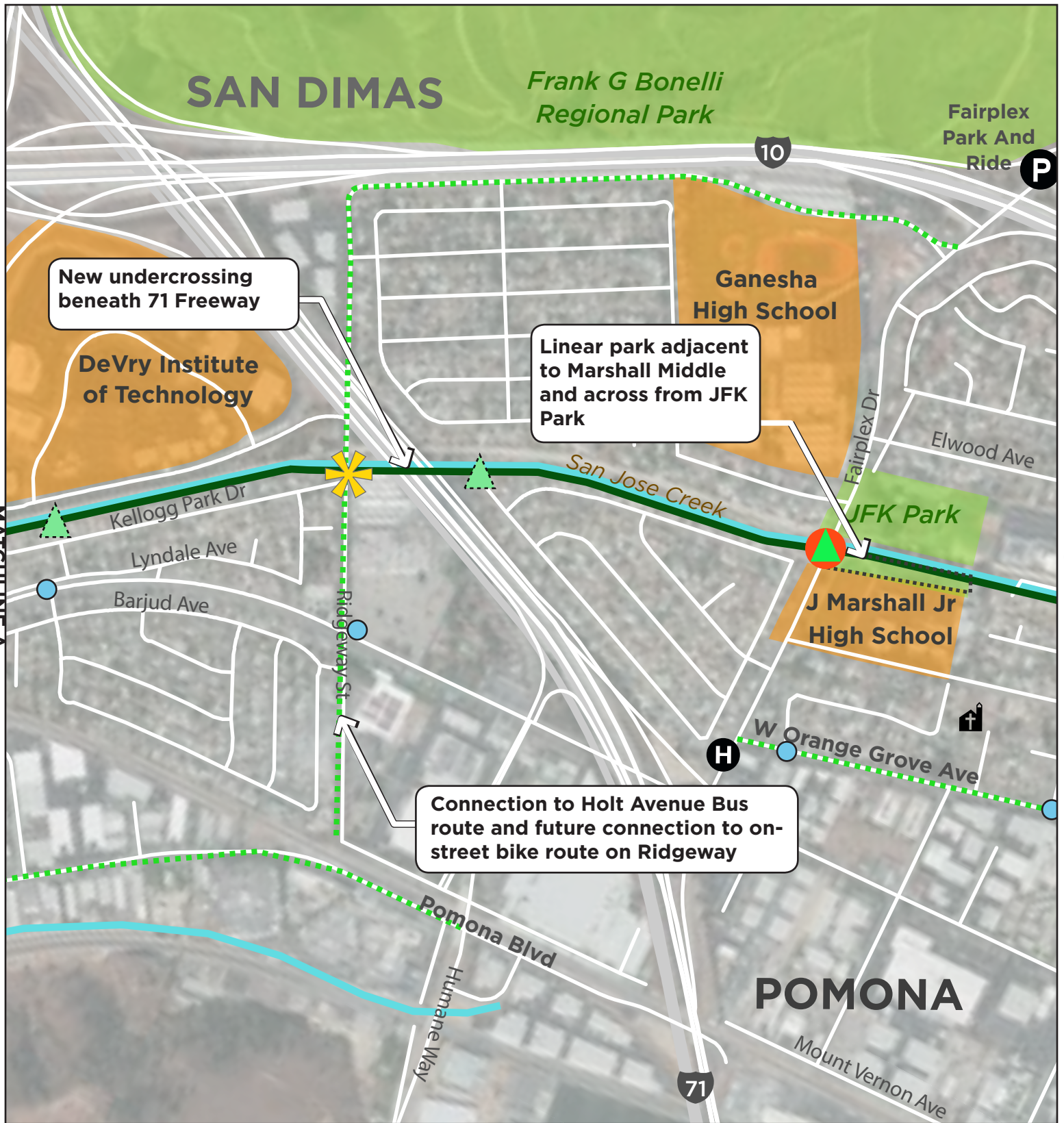


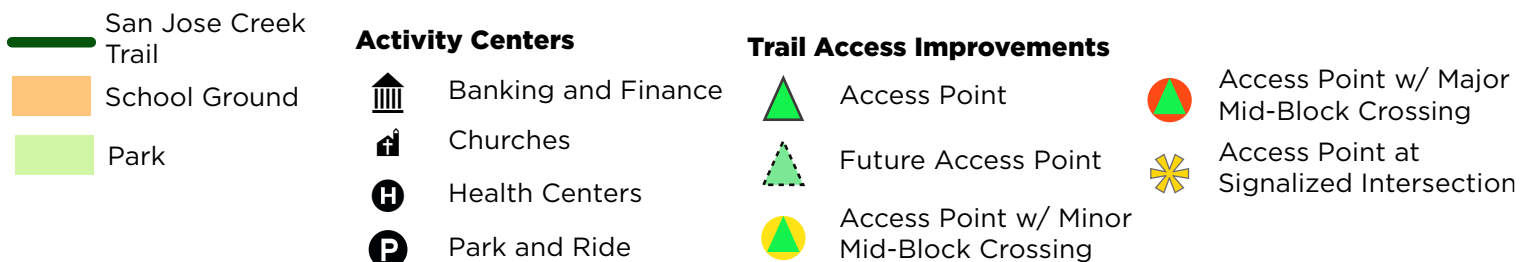
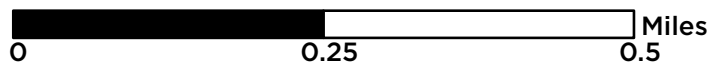
## Site Map: San Jose Creek Greenway Trail



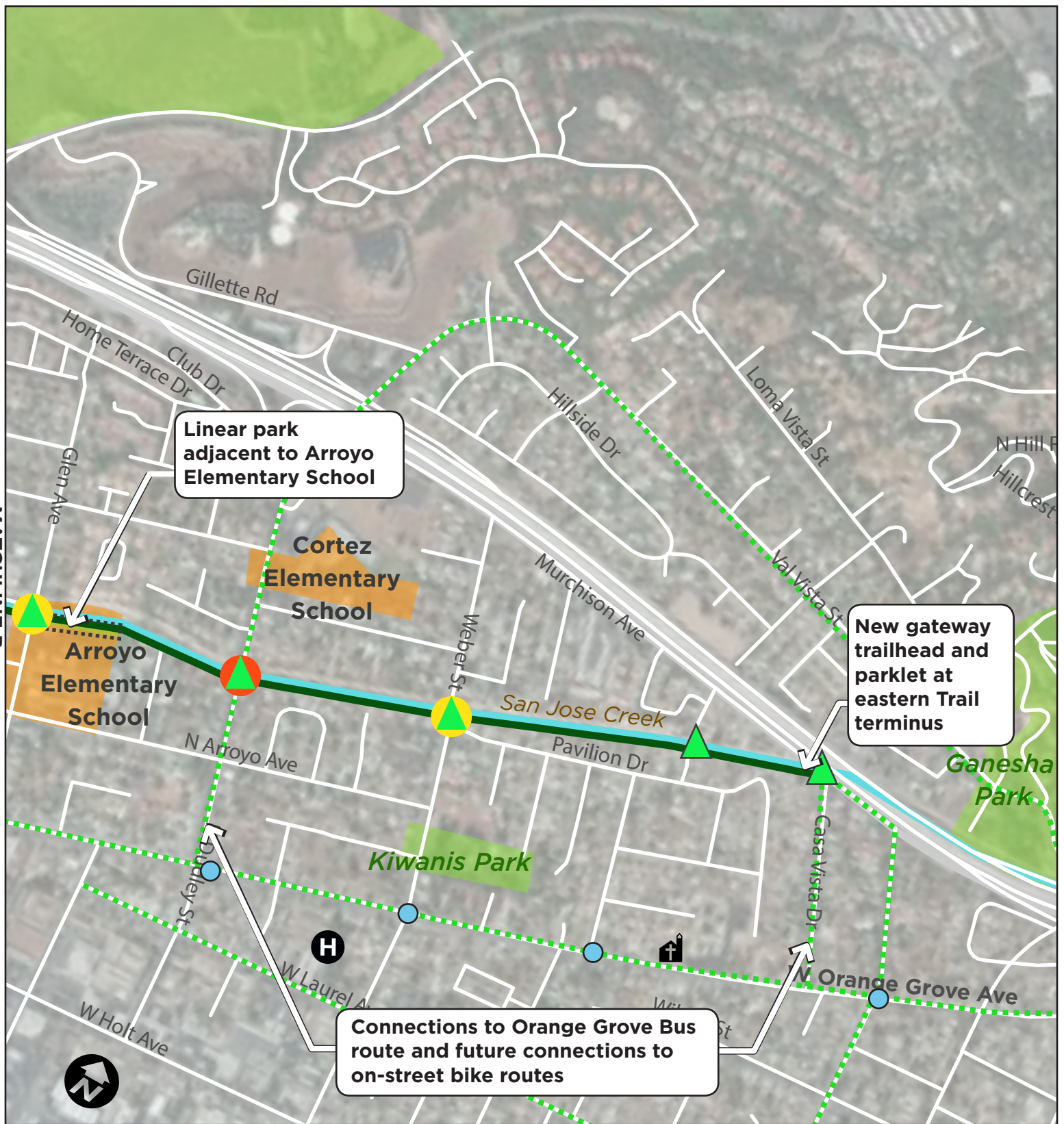




## Site Map: San Jose Creek Greenway Trail














## Site Map: San Jose Creek Greenway Trail

0 0.25 0.5 Miles

-  San Jose Creek Trail
-  School Ground
-  Park

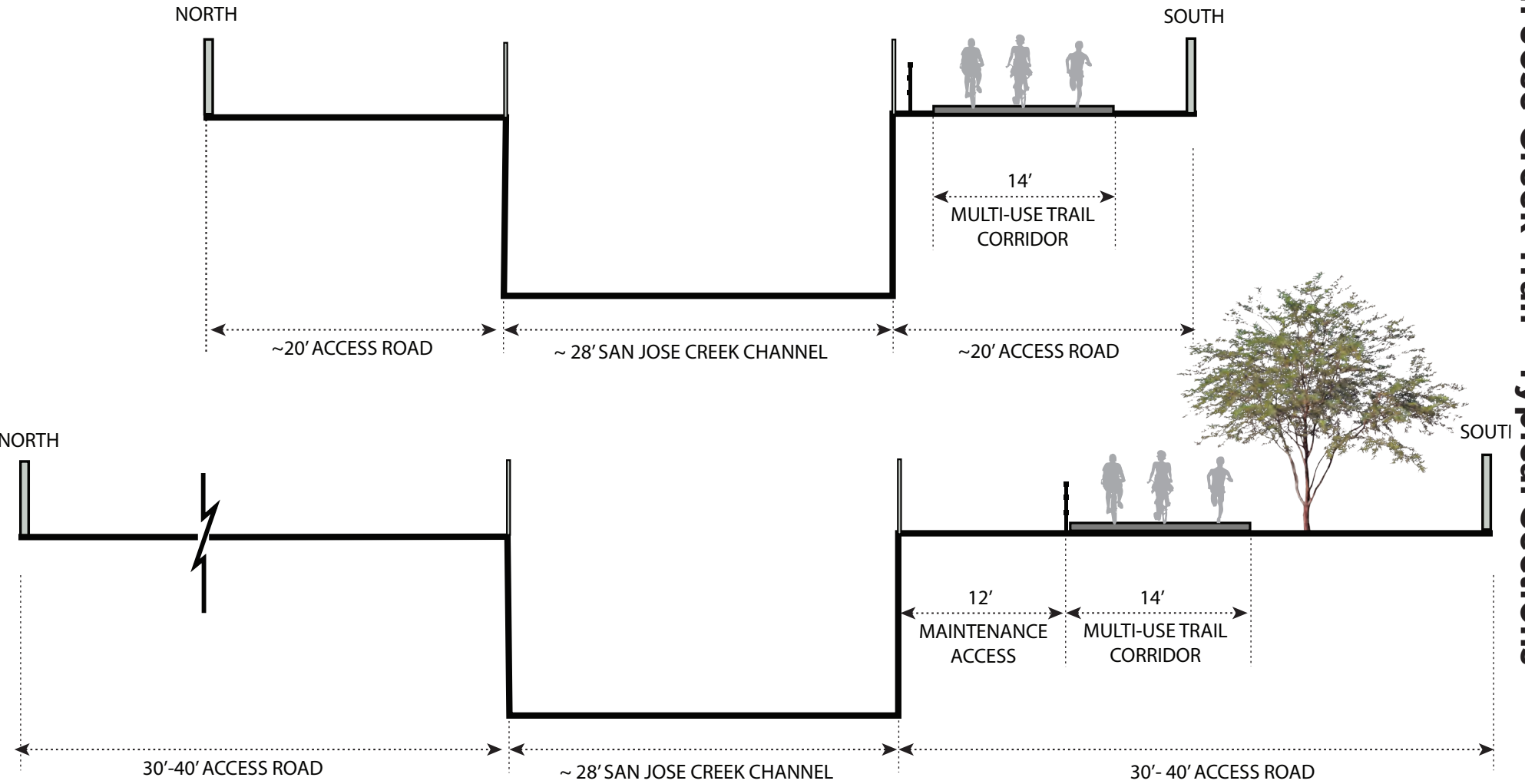
### Activity Centers

-  Banking and Finance
-  Churches
-  Health Centers
-  Park and Ride

### Trail Access Improvements

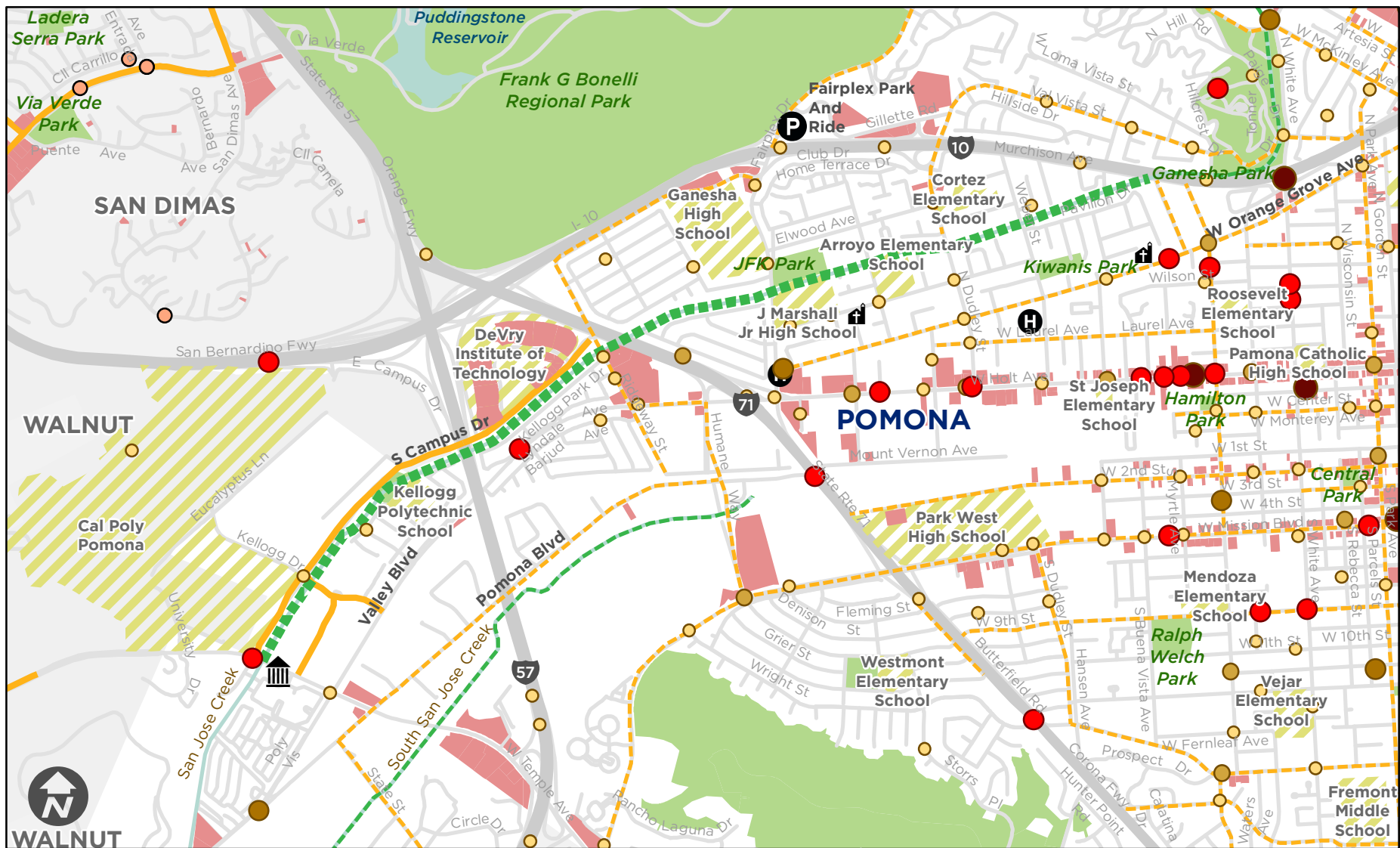
-  Access Point
-  Future Access Point
-  Access Point w/ Minor Mid-Block Crossing
-  Access Point w/ Major Mid-Block Crossing
-  Access Point at Signalized Intersection

# San Jose Creek Trail - Typical Sections



[Photo]: Looking east from SR- 71 along San Jose Creek channel with ~36' wide access roads





## San Jose Creek Trail - Collisions

San Jose Creek Trail

Bike/Ped Collisions (2012 - 2016)

Killed

1 - 2 Injured

3 - 4 Injured

5 - 7 Injured

8 - 11 Injured

School Ground

Existing Bikeways

On-Road Bikeway

Proposed Bikeways

Shared Use Path

On-Road Bikeway

Activity Centers



Banking and Finance



Churches



Health Centers



Park and Ride



Commercial

Park

Water

