

GENERAL DESCRIPTION

"Standing Together" by Ron Jobson

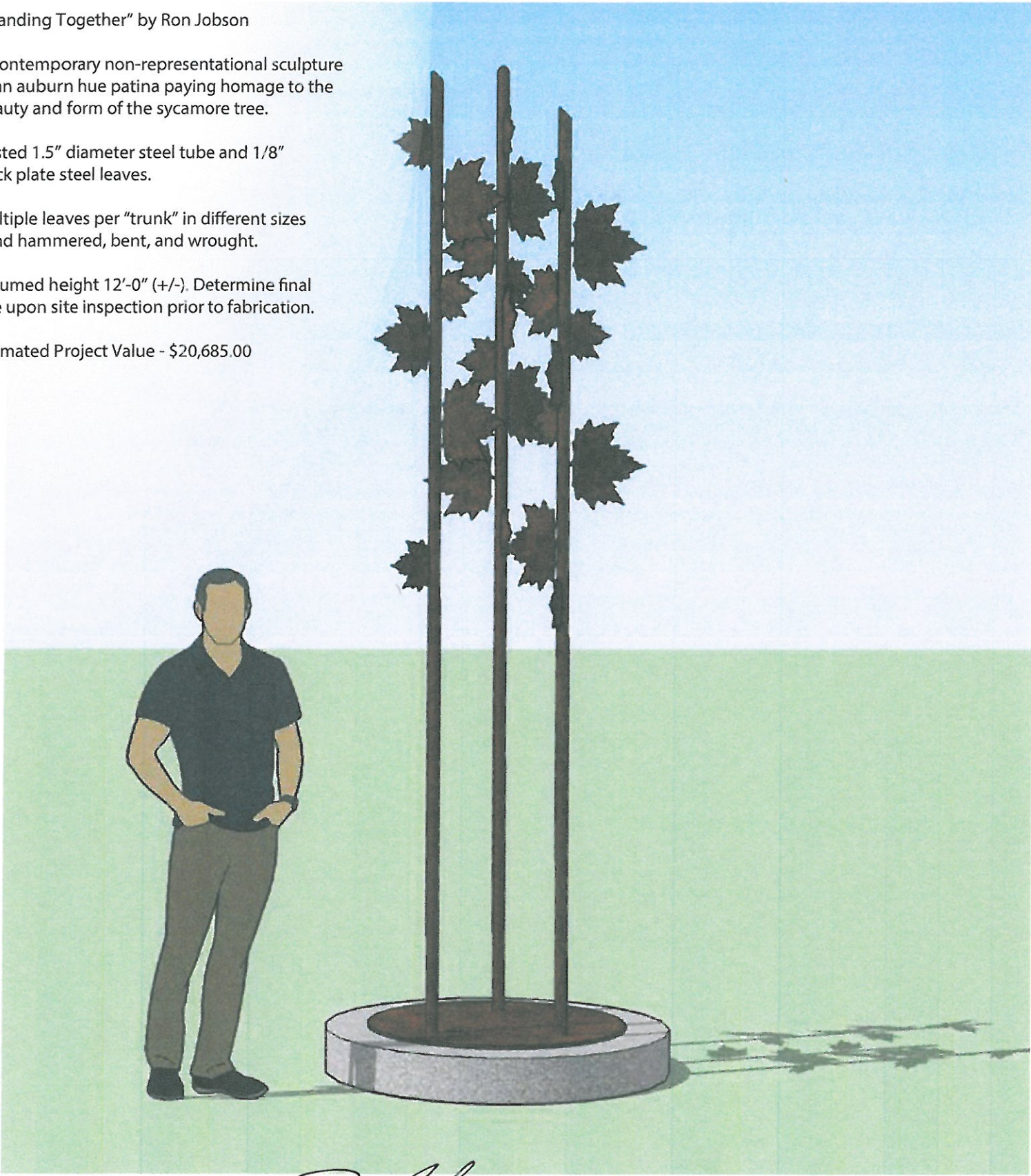
A contemporary non-representational sculpture in an auburn hue patina paying homage to the beauty and form of the sycamore tree.

Rusted 1.5" diameter steel tube and 1/8" thick plate steel leaves.

Multiple leaves per "trunk" in different sizes hand hammered, bent, and wrought.

Assumed height 12'-0" (+/-). Determine final size upon site inspection prior to fabrication.

Estimated Project Value - \$20,685.00



DESIGNED BY: *Ron Jobson*



GENERAL DESCRIPTION

"Standing Together" by Ron Jobson

A contemporary non-representational sculpture in an auburn hue patina paying homage to the beauty and form of the sycamore tree.

Rusted 1.5" diameter steel tube and 1/8" thick plate steel leaves.

Multiple leaves per "trunk" in different sizes hand hammered, bent, and wrought.

Assumed height 12'-0" (+/-). Determine final size upon site inspection prior to fabrication.



1 WEST ELEVATION (WHITE AVENUE): Sculpture
scale: 1/4" = 1'-0"

GENERAL DESCRIPTION

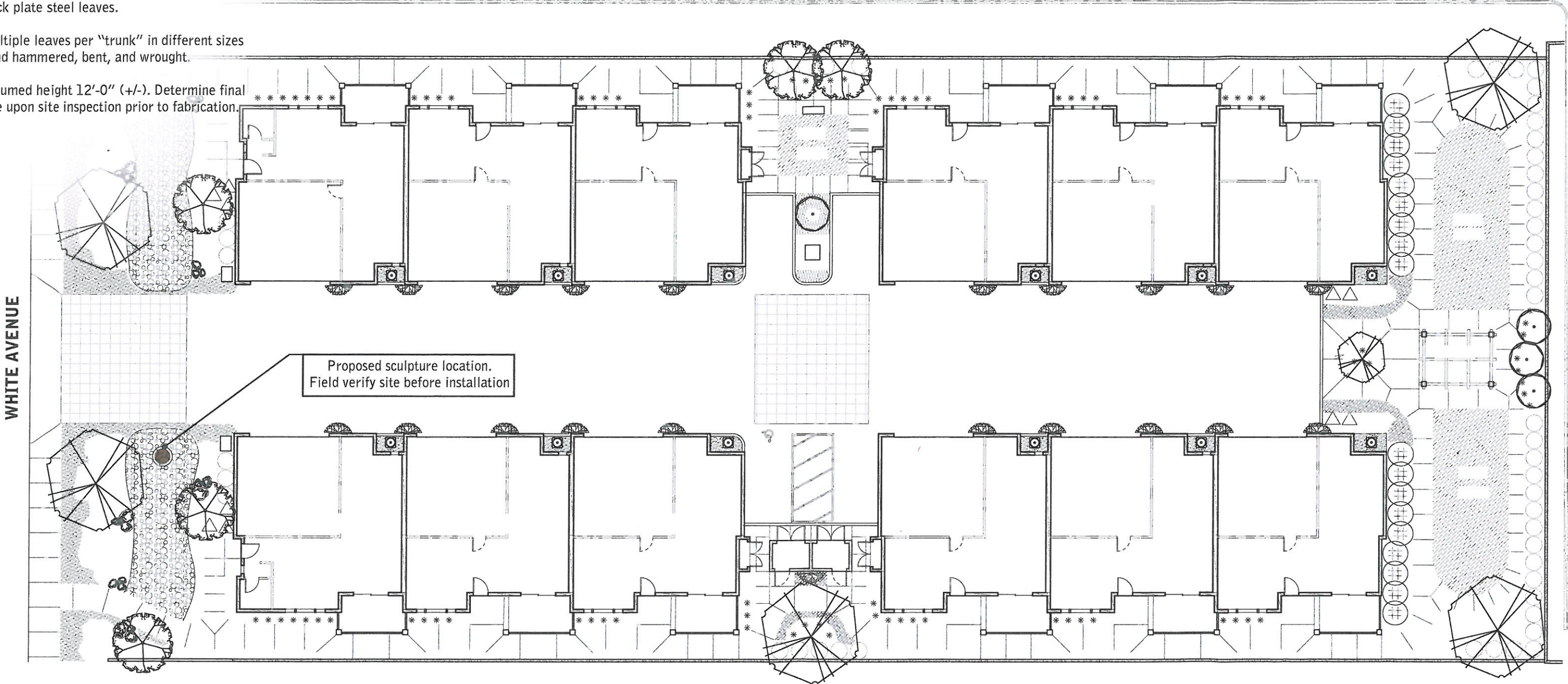
"Standing Together" by Ron Jobson

A contemporary non-representational sculpture in an auburn hue patina paying homage to the beauty and form of the sycamore tree.

Rusted 1.5" diameter steel tube and 1/8" thick plate steel leaves.

Multiple leaves per "trunk" in different sizes hand hammered, bent, and wrought.

Assumed height 12'-0" (+/-). Determine final size upon site inspection prior to fabrication.



1 PLAN VIEW: Sculpture
scale: 1" = 60'-0"