



TORN & GLASSER / NARRATIVE PROPOSAL

CAST SHADOW WALL SCULPTURE

Flat, sculptural elements are attached perpendicularly to the wall. Sunlight casts the sculptures' shadows throughout the day against the building facade. The actual shape of the sculptures are somewhat hidden and are mainly seen by viewers as shadows. The image is a text excerpt from the nursery rhyme "Row, Row, Row Your Boat". The mounted sculptures also act as perches for birds enabling their moving shadows to intentionally activate the wall and reinforce the artwork's message.

In addition, ceramic tiles decorated with water imagery in a linear repeating pattern are mounted along the surface of the cantilevered wall on the far left of the building. The currents of water appear to flow "gently down the stream." Lastly, an excerpt from the rhyme's sheet music appears as low-relief sculptural musical notation, attached to the facade's embossed concrete strip with its horizontal, music-like lines.

All of the sculptural elements allude to different aspects of the widely known, often quoted nursery rhyme. Oddly, the actual element of sound may seem absent, yet viewers will likely play the tune in their heads once the song is recognized.

Using modest physical means, a large-scale, dramatic, ever-changing visual spectacle occurs. Viewers are invited to participate in making sense of the artwork's meaning on multiple levels. The exploration here involves how "presence" occurs in unexpected ways within the mystery of our mortal existence. Metaphorically and in a very real way, the viewer and their experience of the artwork is unique each time, never the same. Familiarity, humor and the poetically profound intermingle.

Why Mt. Vernon location?

1. Holt/Union is more trafficked, yet not ideal for public art:
 - Abundance of landscaping obscures view
 - Building set too far back on property to effectively display art
2. Mt. Vernon warehouse is triggering the 1% art requirement, therefore the logical site for artwork
3. This location is 'off the beaten track':
 - Encourages exploration of a less prominent area
 - Introduces art to an unexpected location & audience in a democratizing way
 - Fulfill's Pomona's Art in Public Places Program mission: "Public art has the potential to improve the appearance of an entire business block; to heighten the ethnic, historical or cultural aspects of a neighborhood; and to attract foot traffic to a street that formerly had little or none."

4. Developer and Owner's commitment to go beyond minimal requirements of building a standard warehouse and simply paying the 1% fee:
- Architect chosen to create aesthetically elevated design
 - Preference to commission art from a local public artist
 - Encourages other businesses to do the same by showcasing the benefits to the owner & the larger community with a solution that surpasses the status quo

Why this particular artwork at this site?

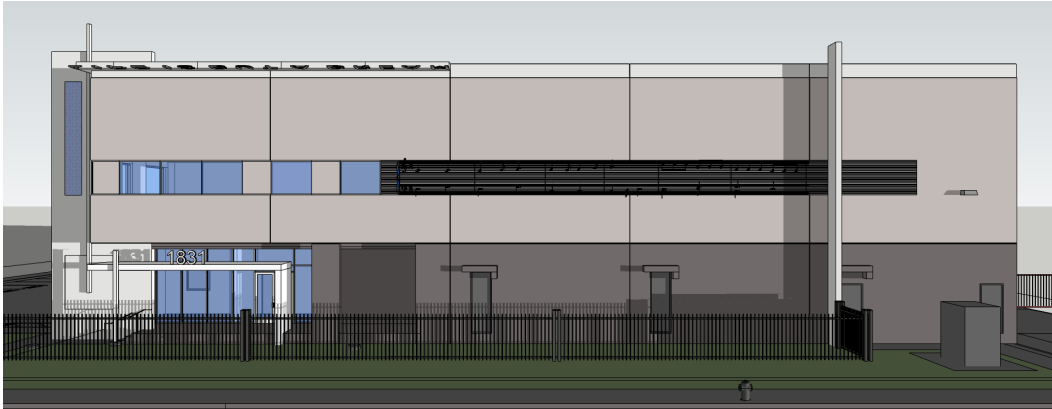
1. Site-specific proposed artwork plays off the building's unique features:
- Modernist geometry
 - Intrinsic shadows on the facade
 - Cantilevered wall
 - Concrete grooved strip
2. An ideal spot to have a meditative, existentially poetic message meant for the general public:
- Location's sense of isolation
 - Lack of distracting commercial signage/billboards
 - Romantic aura of railroads (local connection to faraway places, the lure of travel)
3. Ever-changing visual aspect of the artwork:
- Encourages repeated visits
 - For regular passerby, offers both variety and reoccurring daily/seasonal/yearly marker of time



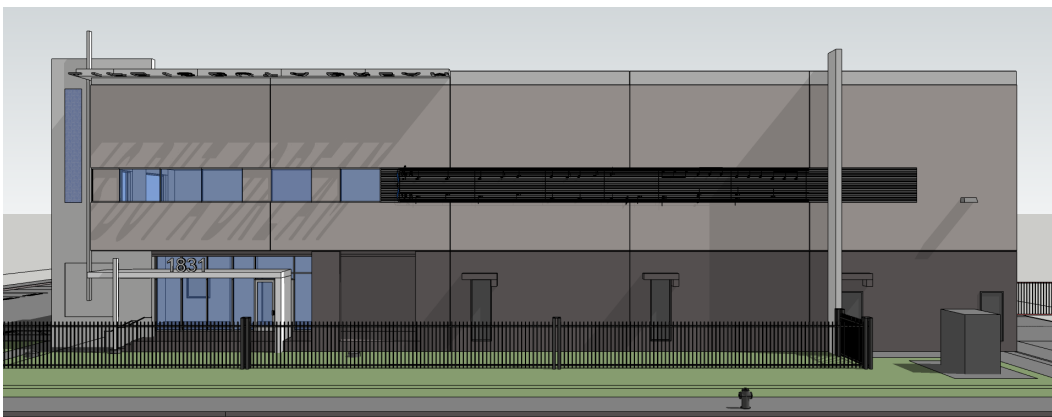
JULIO SIMS Studio

Julio Sims, Artist
1091 S. Sycamore Ave., Los Angeles, CA 90019
www.juliosims.com
julio@juliosims.com
(213) 446-7179

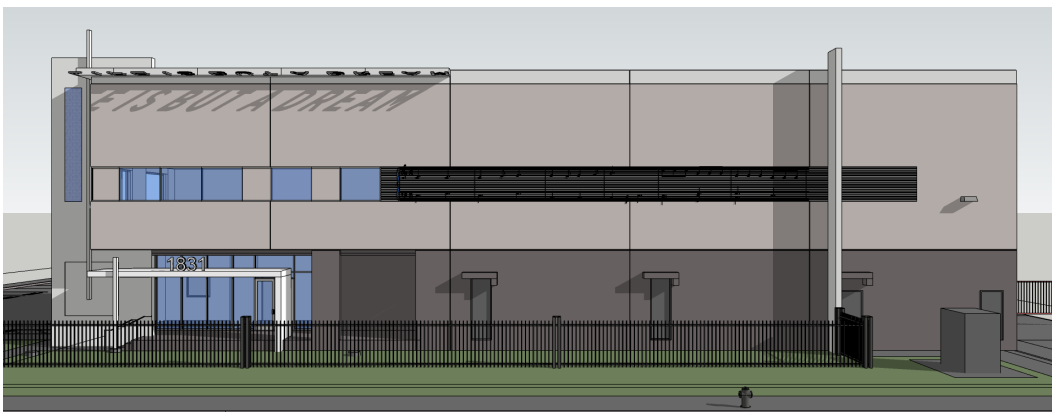
TORN & GLASSER / BUILDING SHADOWS



JANUARY 21 / 7:00AM



MAY 21 / 9:00AM



SEPTEMBER 21 / 8:00AM



JULIO SIMS Studio

Julio Sims, Artist
1091 S. Sycamore Ave., Los Angeles, CA 90019
www.juliosims.com
julio@juliosims.com
(213) 446-7179

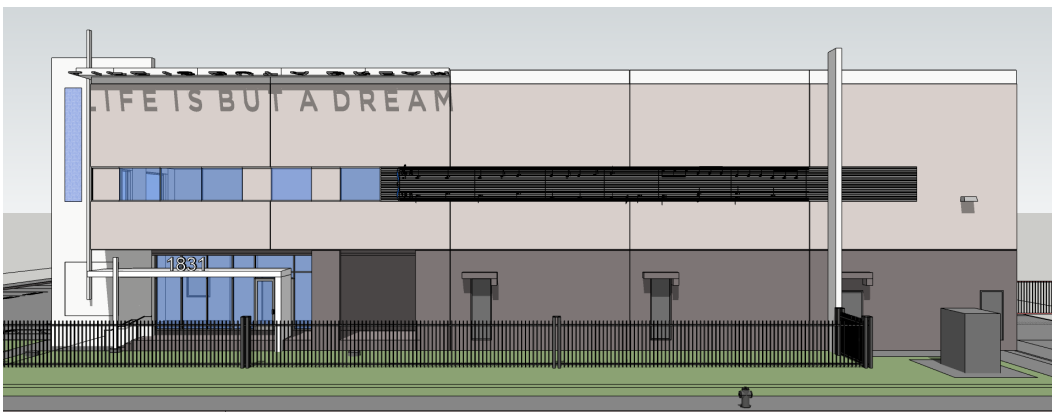
TORN & GLASSER / BUILDING SHADOWS



JANUARY 21 / 12:00PM



MAY 21 / 12:00PM



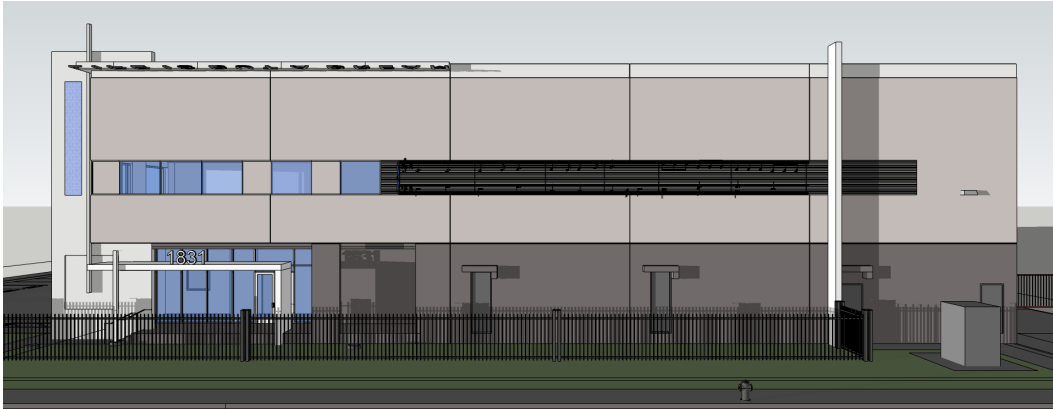
SEPTEMBER 21 / 12:00PM



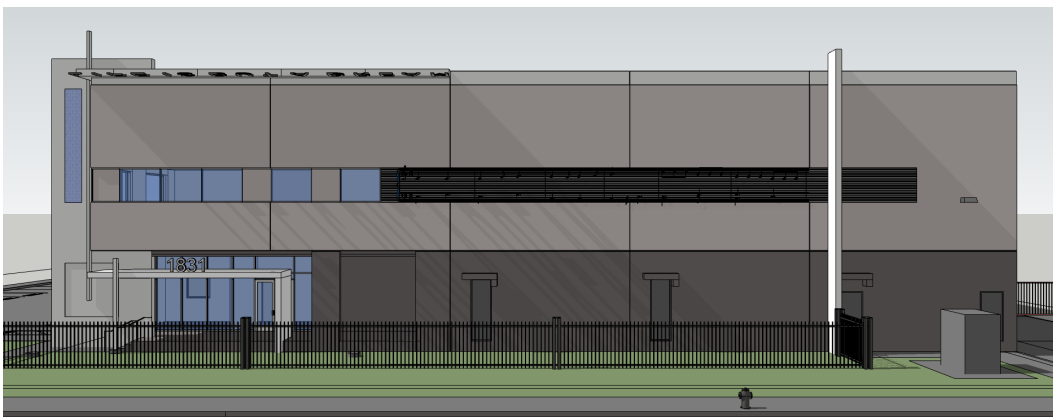
JULIO SIMS Studio

Julio Sims, Artist
1091 S. Sycamore Ave., Los Angeles, CA 90019
www.juliosims.com
julio@juliosims.com
(213) 446-7179

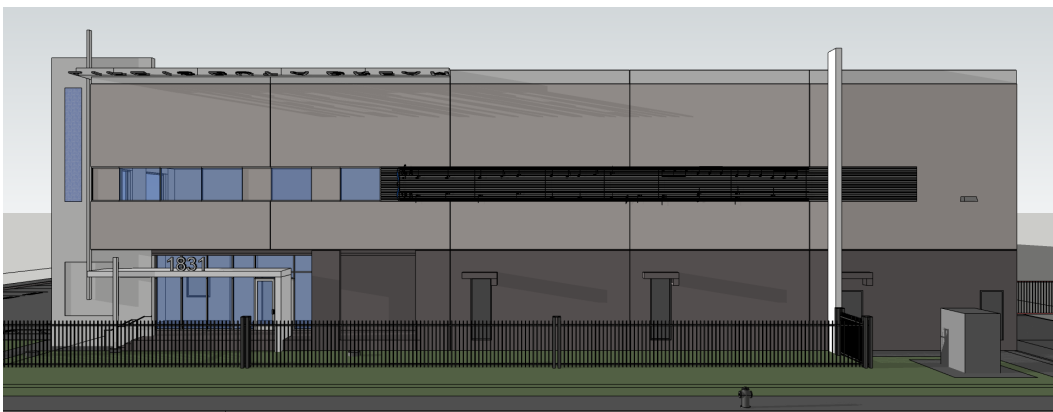
TORN & GLASSER / BUILDING SHADOWS



JANUARY 21 / 5:00PM



MAY 21 / 3:00PM



SEPTEMBER 21 / 5:00PM