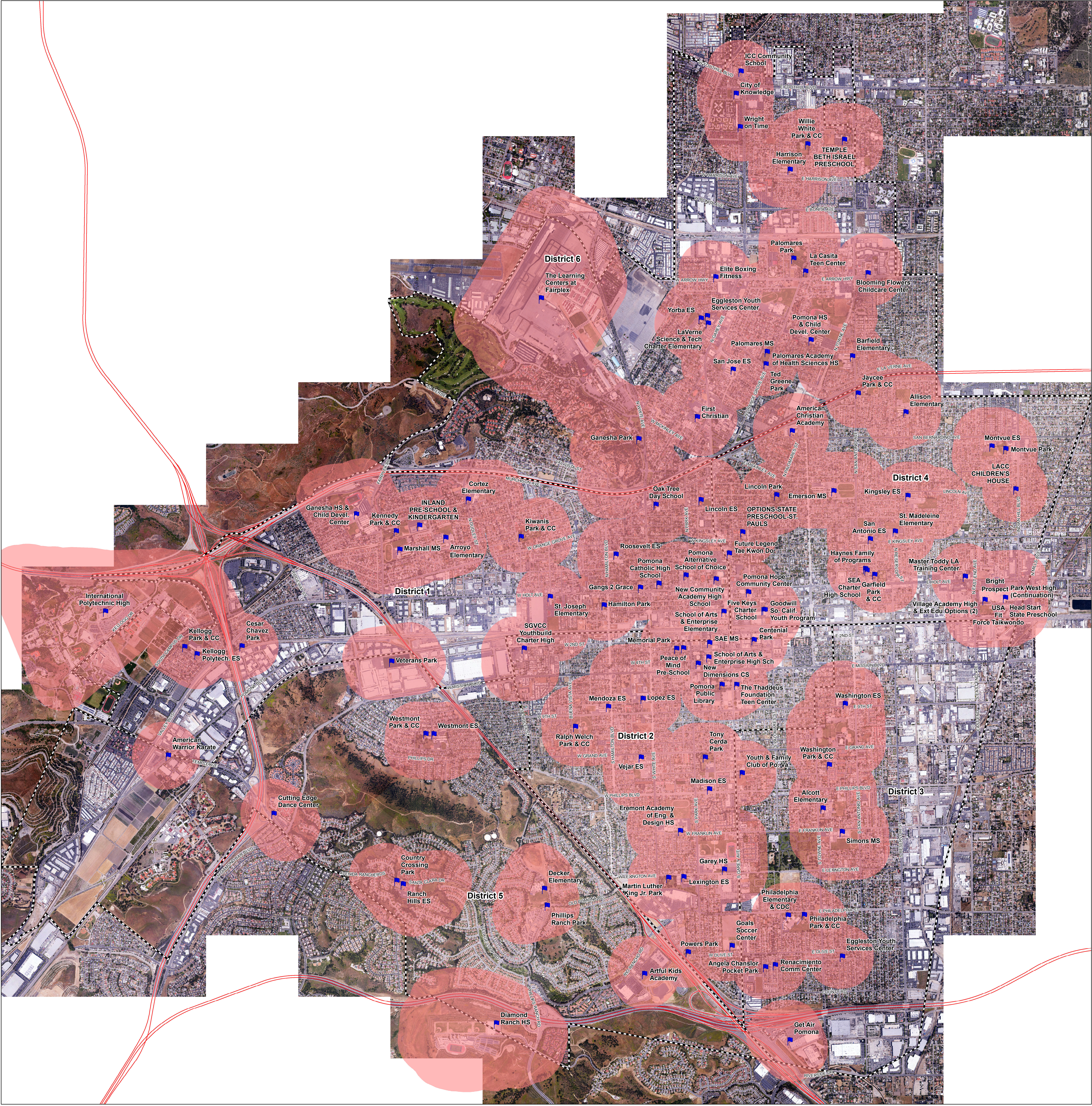



Cannabis Overlay Zone Map


Sensitive Use Buffer


September 26, 2019


DRAFT



 Sensitive Uses

 Sensitive Use Buffer

 Council Districts

 City Boundary

Sensitive Use Sites based on those identified as of 6/15/2018

Unlicensed and Closed Locations Removed 7/29/2019, 9/5/2019, 9/12/2019, & 9/26/2019

00.512

Miles

This draft map is provided for reference only and is not intended to be comprehensive or reliable for the purpose of securing a site for a Commercial Cannabis Permit in the City of Pomona. Any operator of a Commercial Cannabis business in the City of Pomona will be subject to the requirements of Chapter 68 of the Pomona Municipal Code pertaining to Commercial Cannabis Businesses, along with any adopted zoning regulations related to commercial cannabis use. All potential sites that allow any type of commercial cannabis land use will be verified for compliance with the Pomona Municipal Code and Pomona Zoning Ordinance upon submission of a Commercial Cannabis Permit application.

