

Proposition 68

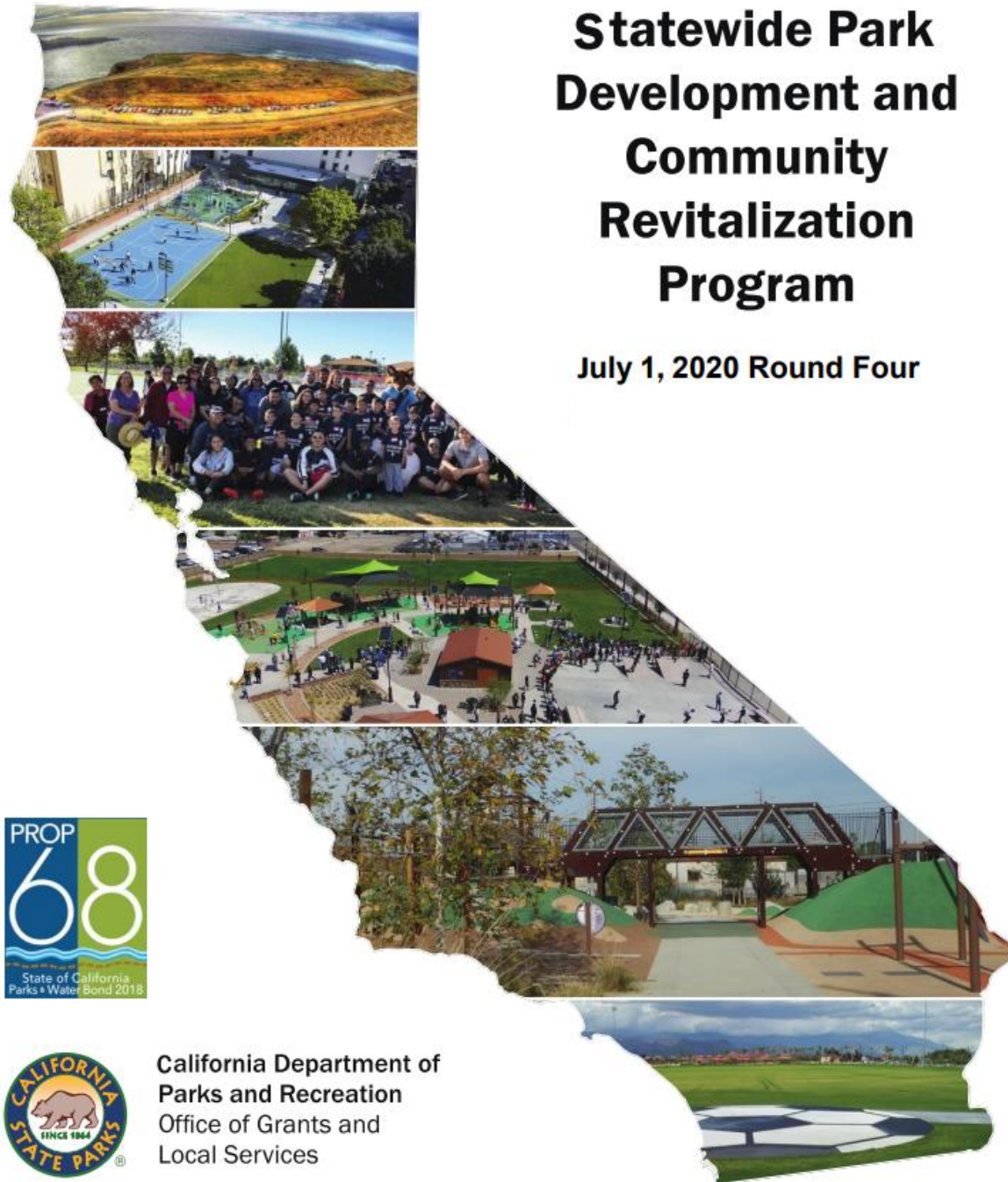
Statewide Park Development and Community Revitalization Program



Shandy Dittman, Senior Management Analyst

Statewide Park Development and Community Revitalization Program

July 1, 2020 Round Four



California Department of
Parks and Recreation
Office of Grants and
Local Services

Timeline

**December
14, 2020
Application
Due**



**Jan. – Jun.
2021
Evaluation**



**Summer
2021
Award**



**Summer 2021
(contingent on
award)
Council
Review/
Approval and
Fund
Appropriation**



**January
2022
Begin
Construction**



Tony Cerda Park

- Within ½ Mile Radius:
 - 5th Lowest Park Acres/1,000 People
 - 7th Lowest Median Income
- Significant history of community interest and involvement
- Need for renovations due to facility conditions
- Nearby partnership opportunities



Tony Cerda Park

Possible Project Scope

- *Renovate Stage*
- *Add Wi-Fi*
- *Add Basketball Court*
- *Add/integrate lighting throughout the park with LED*
- *Add Tennis Court*
- *Renovate restrooms*
- *Smart irrigation*
- *Add Jogging Path and Exercise Equipment*
- *Upgrade playground to all abilities/inclusive*
- *Add Gazebo and Picnic Areas*
- *Add Arena Soccer Facility*
- *Add Trees and Landscaping*



Washington Park

865 W. Grand Avenue

Within ½ Mile Radius:

- At 2.51 acres, it ranks 19th in lowest park acres/1,000 people
- 8th Lowest Median Income
- Highest used park
- Need for larger community center
- Sports leagues
- After School Recreation and Senior Programming
- Opportunities for local partnerships



Round 4 Application
\$6,000,000 - \$7,500,000

Washington Park

865 W. Grand Avenue

REVISED Project Scope:

- *Park “expansion” to renovate west parking lot*
- *Demolish and construct new community center with indoor multi-sport court*
- *Wi-Fi throughout the park*
- *New outdoor restroom*
- *New playground area on east side*



Philadelphia Park

Within ½ Mile Radius:

- 14th lowest park acres/1,000 people
- 6th lowest median income
- Increase park space by approx. 38%
- Need for renovations due to facility conditions, including the community center
- Adjacent to Philadelphia Elementary School



Philadelphia Park

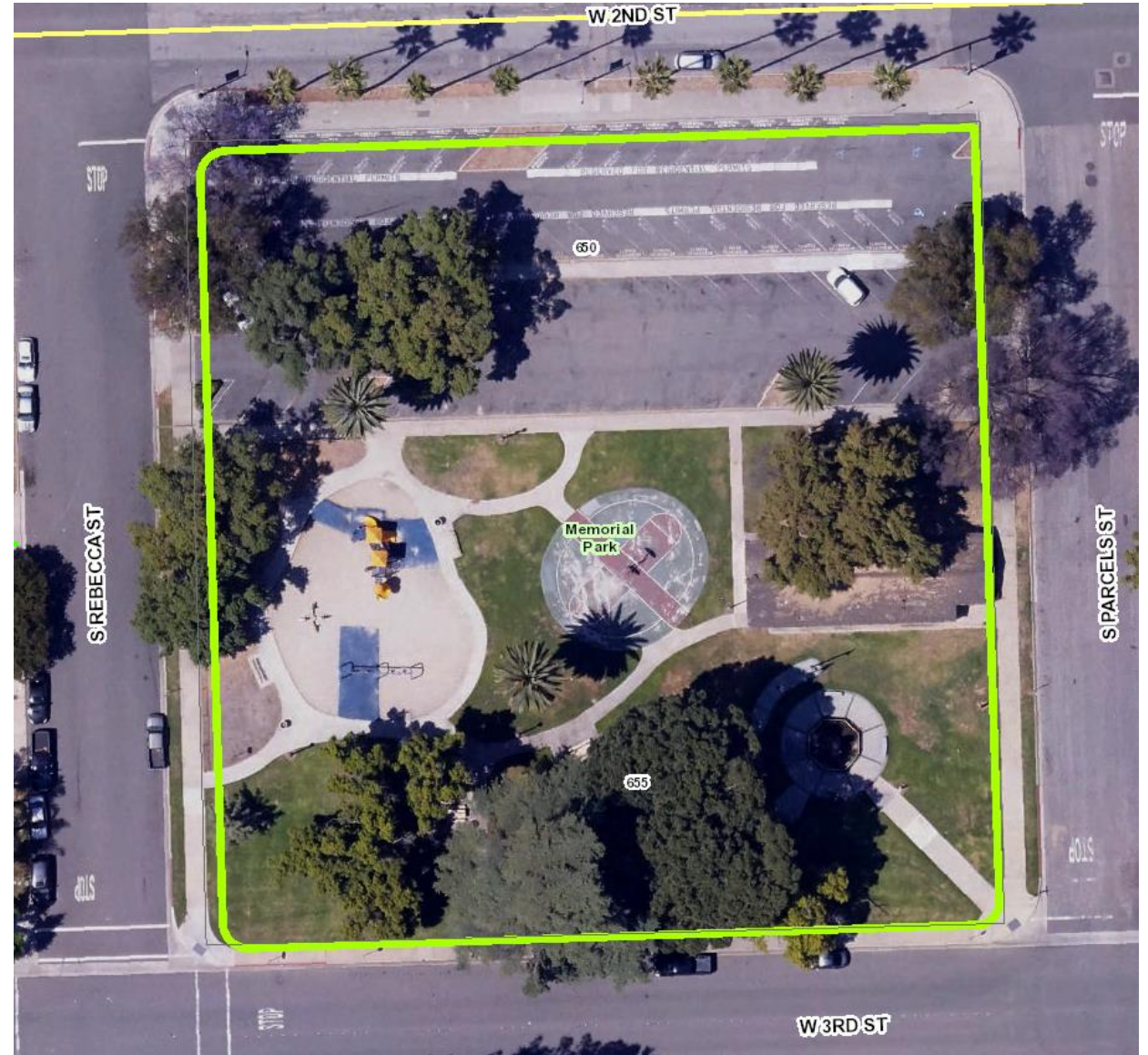
Proposed Project Scope

- *Park expansion*
- *Add Wi-Fi*
- *Redo basketball court*
- *Add/integrate lighting throughout the park with LED*
- *Renovate fields*
- *Renovate restrooms*
- *Smart irrigation*
- *Connect walkways/pathways throughout the park*
- *Upgrade playground to all abilities/inclusive*
- *Upgrade gazebo*
- *Renovate community center*



Memorial Park

- Within ½ Mile Radius:
 - 10th Lowest Park Acres/1,000 People
 - 4th Lowest Median Income
 - 5th Highest number of people in poverty
- History of community interest
- Need for renovations due to facility conditions
- Oldest Community Center in Pomona
- Honors veterans



Memorial Park

Possible Project Scope

- *Renovate Community Center*
- *Add Wi-Fi*
- *Renovate Basketball Court*
- *Add/integrate lighting throughout the park with LED*
- *Add Jogging Path and Exercise Equipment*
- *Smart irrigation*
- *Add Jogging Path and Exercise Equipment*
- *Upgrade playground to all abilities/inclusive*
- *Additional Trees and Landscaping*



Garfield Park

- Within ½ Mile Radius:
 - 2nd Lowest Park Acres/1,000 People
 - 1st Lowest Median Income
 - 1st Highest number of people in Poverty
- Need for renovations due to facility conditions, including the Community Center



Garfield Park

Proposed Project Scope

- *Add Wi-Fi*
- *Redo basketball court*
- *Add/integrate lighting through the park with LED*
- *Add skate park*
- *Renovate fields*
- *Renovate restrooms*
- *Smart irrigation*
- *Renovate bathrooms*
- *Upgrade playground to all abilities/inclusive*
- *Add parking in rear*
- *Renovate community center*





WE NEED YOUR HELP!

City Parks Funding Opportunity

If you live near:

- **Washington Park**
- **Garfield Park**
- **Memorial Park**
- **Tony Cerda Park**
- **Philadelphia Park**



Take a SURVEY telling us what you want to see at these parks:

ci.pomona.ca.us/ParkSurvey

Questions?

Comments?

