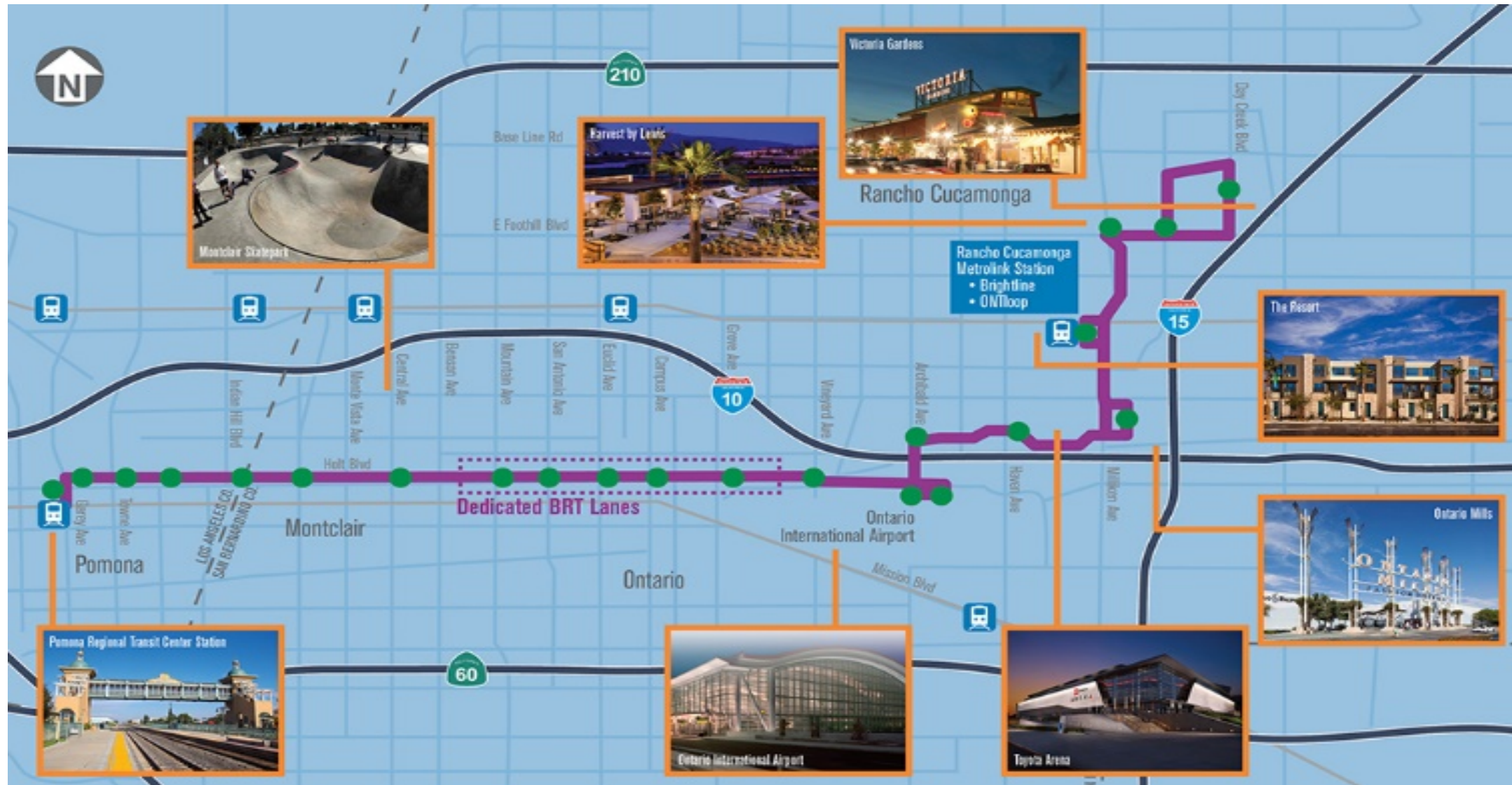


Art Program West Valley Connector Project

San Bernardino County Transit Authority (SBCTA)

Omnitrans

What is the West Valley Connector Project?



Project Art Opportunities/Process:

- **Opportunities:**

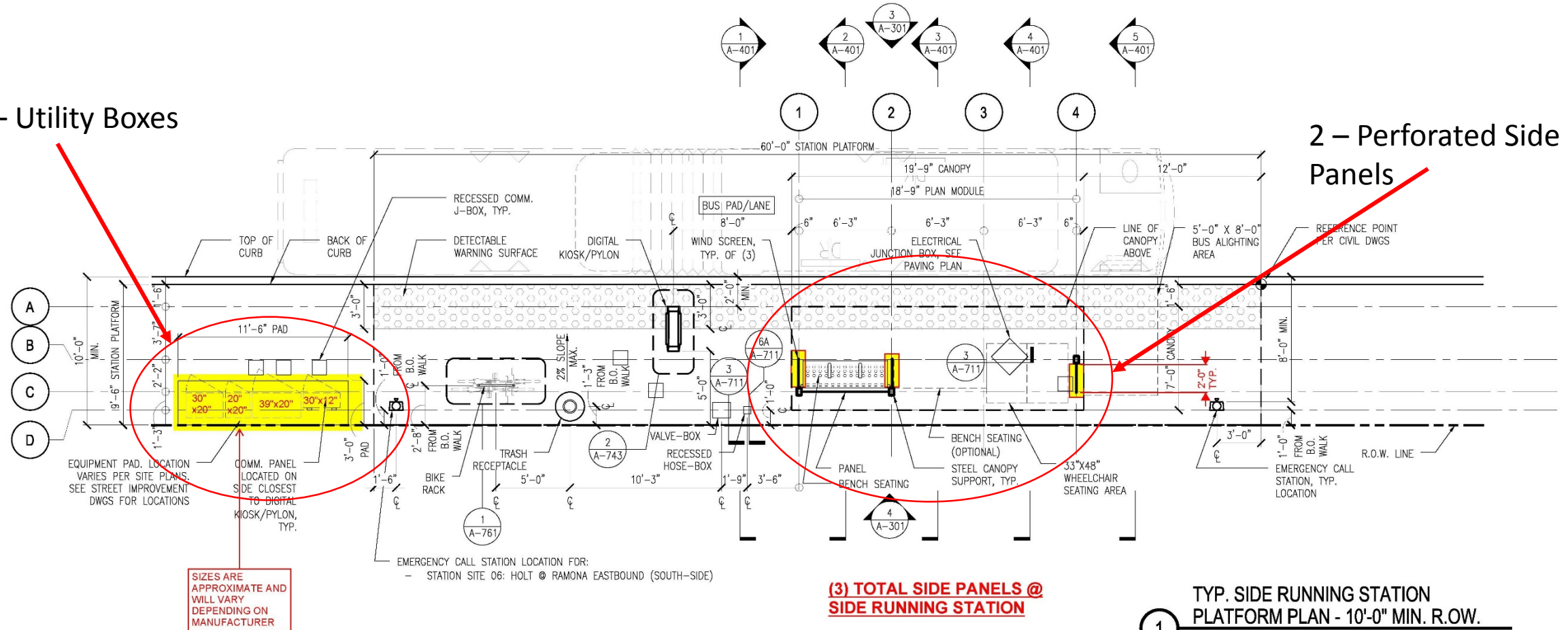
- Perforated Metal Panels integrated into station shelters
- Groupings of utility boxes along the alignment

- **Art Selection Committee/Process:**

- Each City Represented
 - ASC member to assist in Outreach and Review
- CaFE system for artists submissions
- Review of Preliminary and Final Design Concepts
- ASC makes recommendations to the WVC BRT project team and SBCTA and Omnitrans boards

Typical for Center Running Station

1 – Utility Boxes



Technical Specifications to be conveyed to finalists as they develop design concepts for review. ASC will select final three for commission. These include:

-
- 5**
- SCALE: 1/2"=1'-0"
- 9'-4" BOTTOM OF STRUCTURE
SIDE RUNNING STATION - ENLARGED END ELEVATION
- ~7'-8" TYP.
- 2'-0" TYP.
- C** **B** **A**
- POLYCARBONATE PANELS WITH BENT FACES
- STEEL TUBE CANOPY STRUCTURE, WELD AND GRIND ALL JOINTS SMOOTH, PAINT HPS
- SECURITY CAMERA, RE: COMMUNICATIONS
- ST. STEEL STAND-OFF PANEL ANCHOR STEEL ANGLE INTERMEDIATE STRUCTURE
- LED LINEAR LIGHTING, TYPICAL, RE: ELECTRICAL
- PA SPEAKER, RE: COMMUNICATIONS
- STEEL TUBE CANOPY STRUCTURE BEYOND, WELD AND GRIND ALL JOINTS SMOOTH, PAINT HPS
- LINE OF COLUMN FOUNDATION
- SCORED CONCRETE SLAB
- TRUNCATED DOME SAFETY PAVING
- EXISTING CONCRETE CURB TO REMAIN
- WEST VALLEY

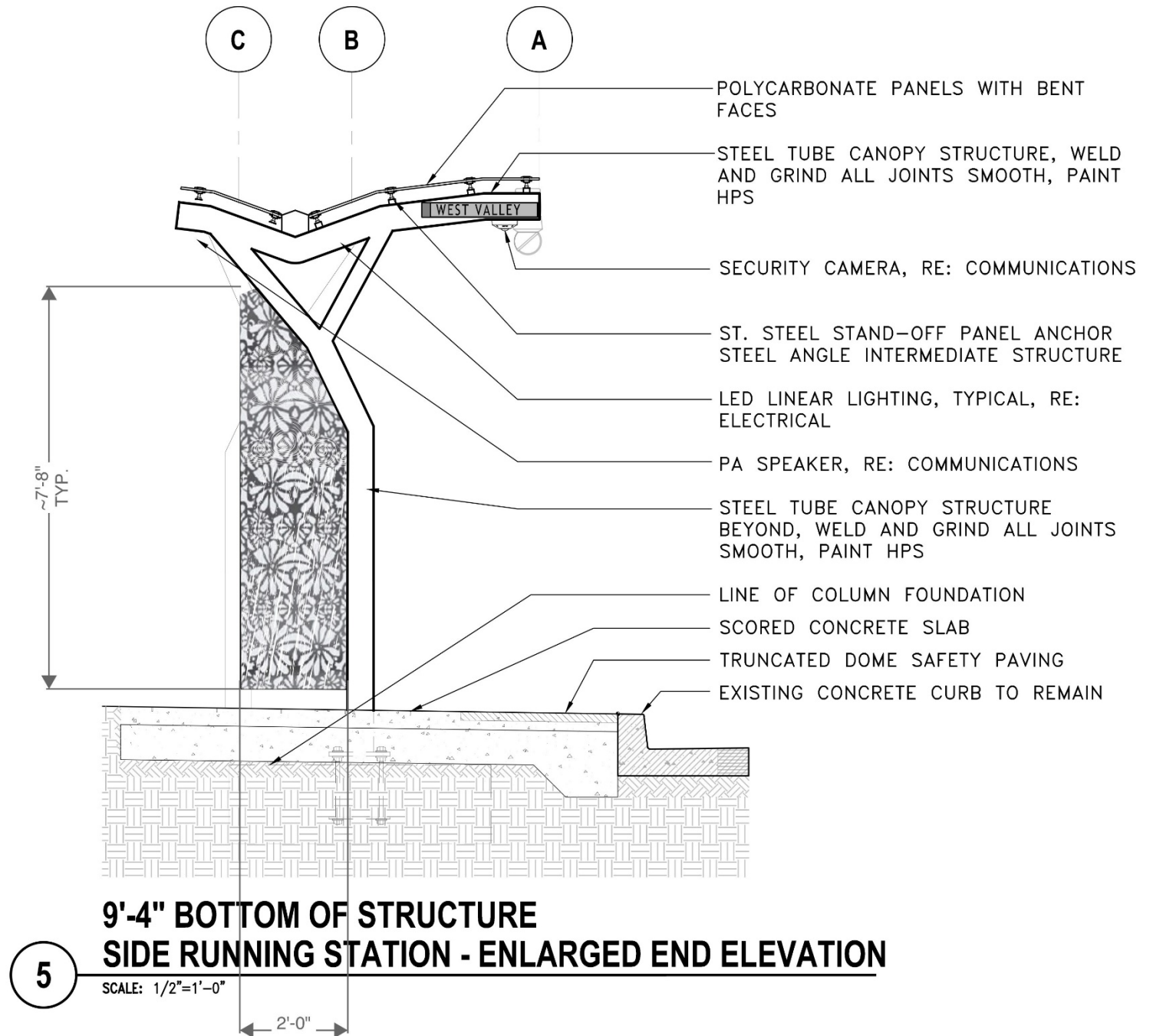


Samples of off the shelf Perforated Panels

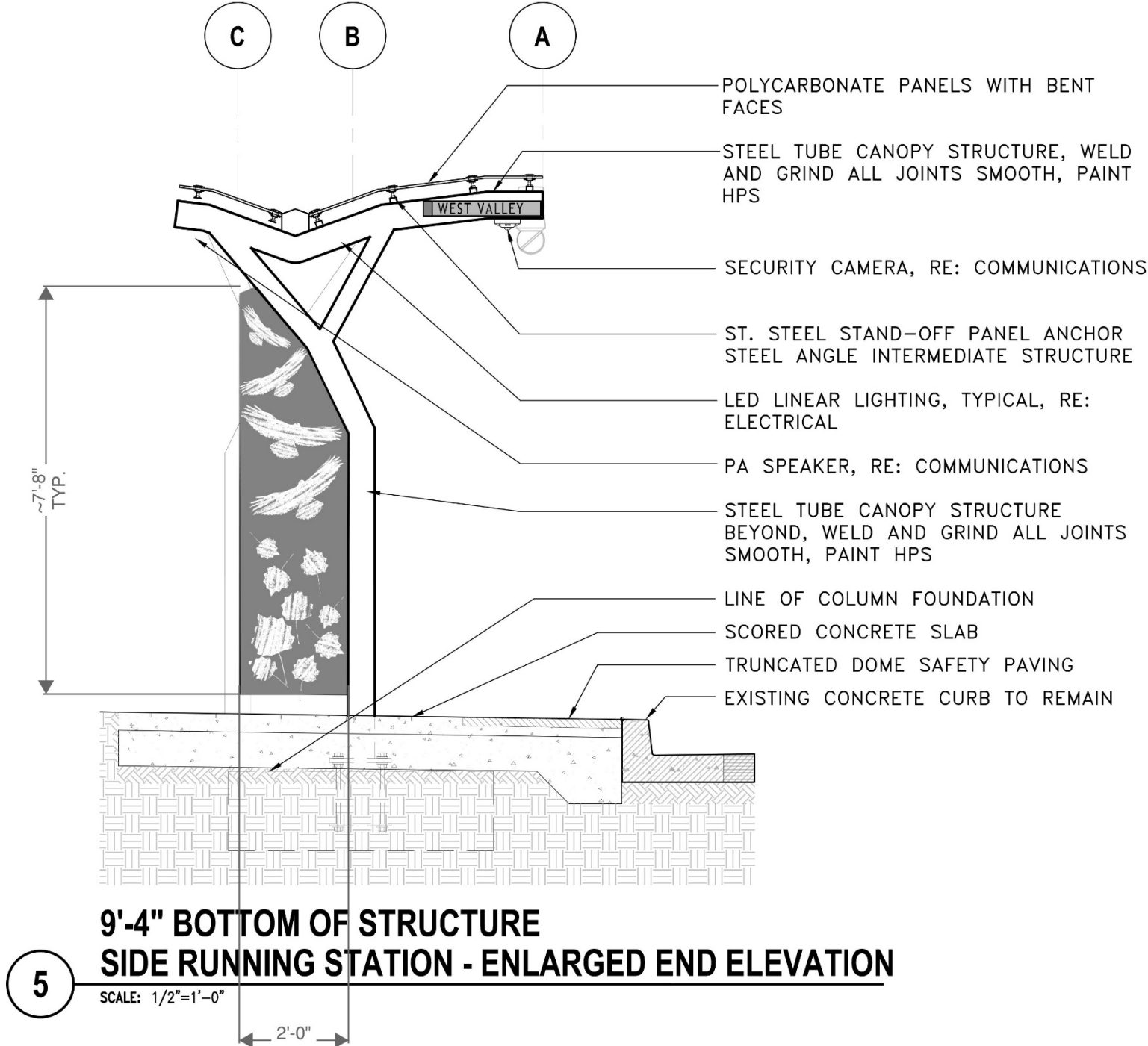




Source
Design for
Perforated
Meal Side
Panel

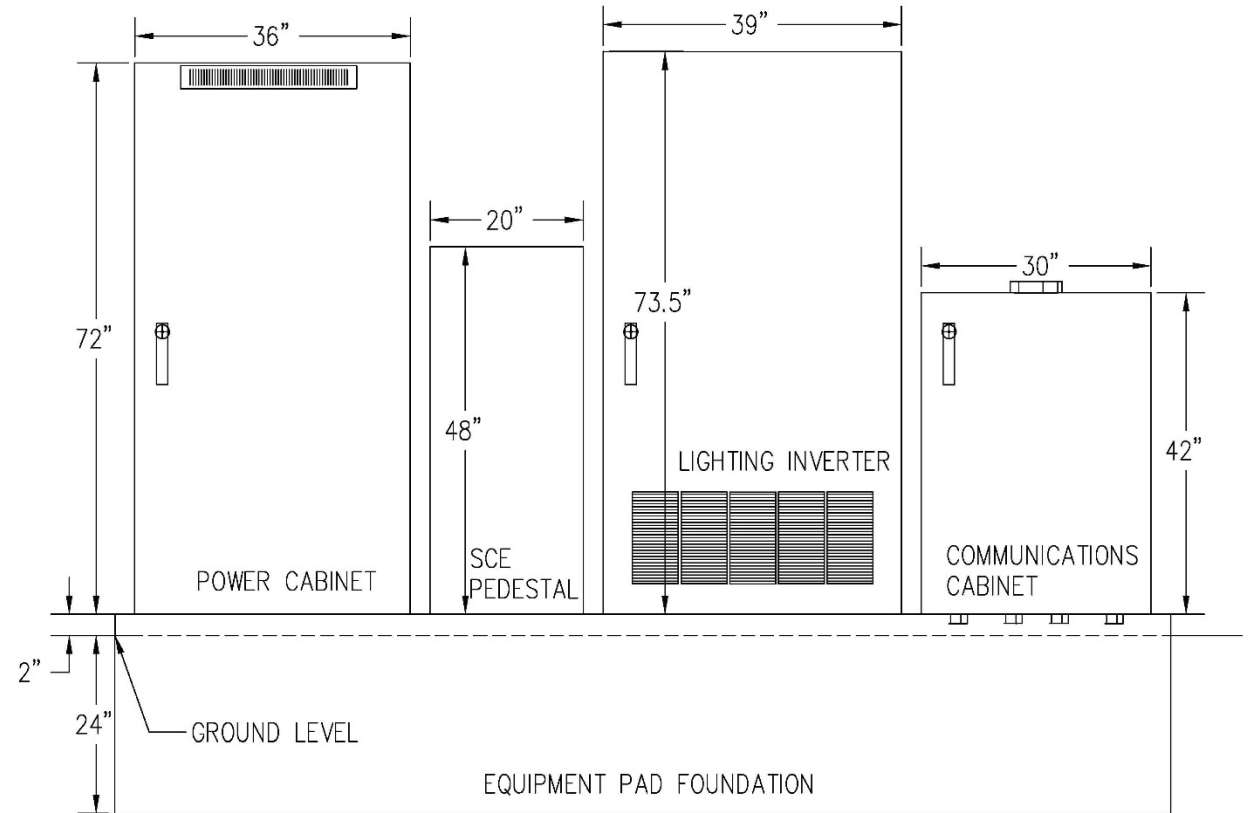


Sample of
Original
Artwork for
Perforated
Side Panel



Utility Box Artwork

Visible front, back and side panels will have artwork applied to these surfaces.



FRONT VIEW

Design based on Heritage a local History.



Design based on photographs submitted.



Design based on Original Artwork.

Next Steps:

Designate a member from the art commission to serve on the art selection committee to represent the City of Pomona

- 14 – 16 hours of time over a 6 month period

- Review of submission materials for rating

- Meet with the other pane members to shortlist artists for each opportunity

- Review of preliminary concepts

- Review of final design concepts

Assist in outreach to the arts community to spread the word about the RFQ's

Schedule:

- Perforated metal panel RFQ issued October 2021

- Utility box RFQ issued in early 2022