

Designation of the Pomona Civic Center as a Local Historic District



City Council Meeting – October 18, 2021

Background

- Application for Landmark submitted in 2017.
- Additional information submitted and Council authorized application review to move forward in February 2020.
- Staff recommended District instead of Landmark.



Architectural Styles

- 2 Main styles
- New Formalism and Mid-Century Modern
- Mid-Century Modern
- New Formalism

Mid-Century Modern

- Character-Defining Features:
 - Smooth plaster finish on exterior walls,
 - Columns support structure
 - Ground floor separated from other stories, may be recessed
 - Some use of natural materials possible
 - Flat roofs
 - Extensive use of glass
 - Metal frame windows
 - No window or door trim

New Formalism

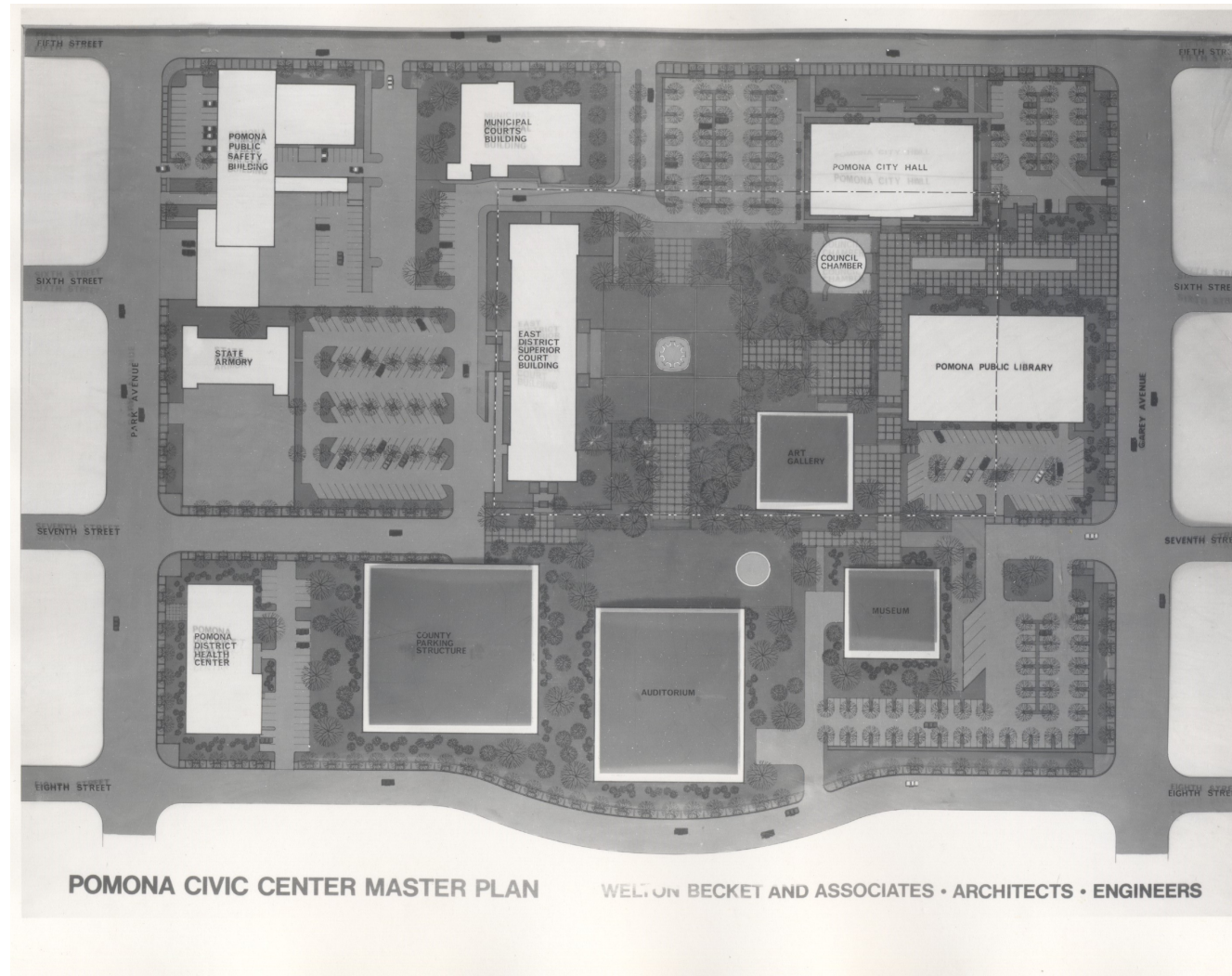
- Character-defining Features
 - Use of travertine, marble, granite, etc.
 - Separate from ground and nature, set on a podium
 - Monumental massing and form
 - Classical precedents, columns, arches, colonnades, and entablatures
 - Smooth wall surfaces
 - Delicate details
 - Formal landscape; use of pools, fountains, sculpture within a central plaza

History

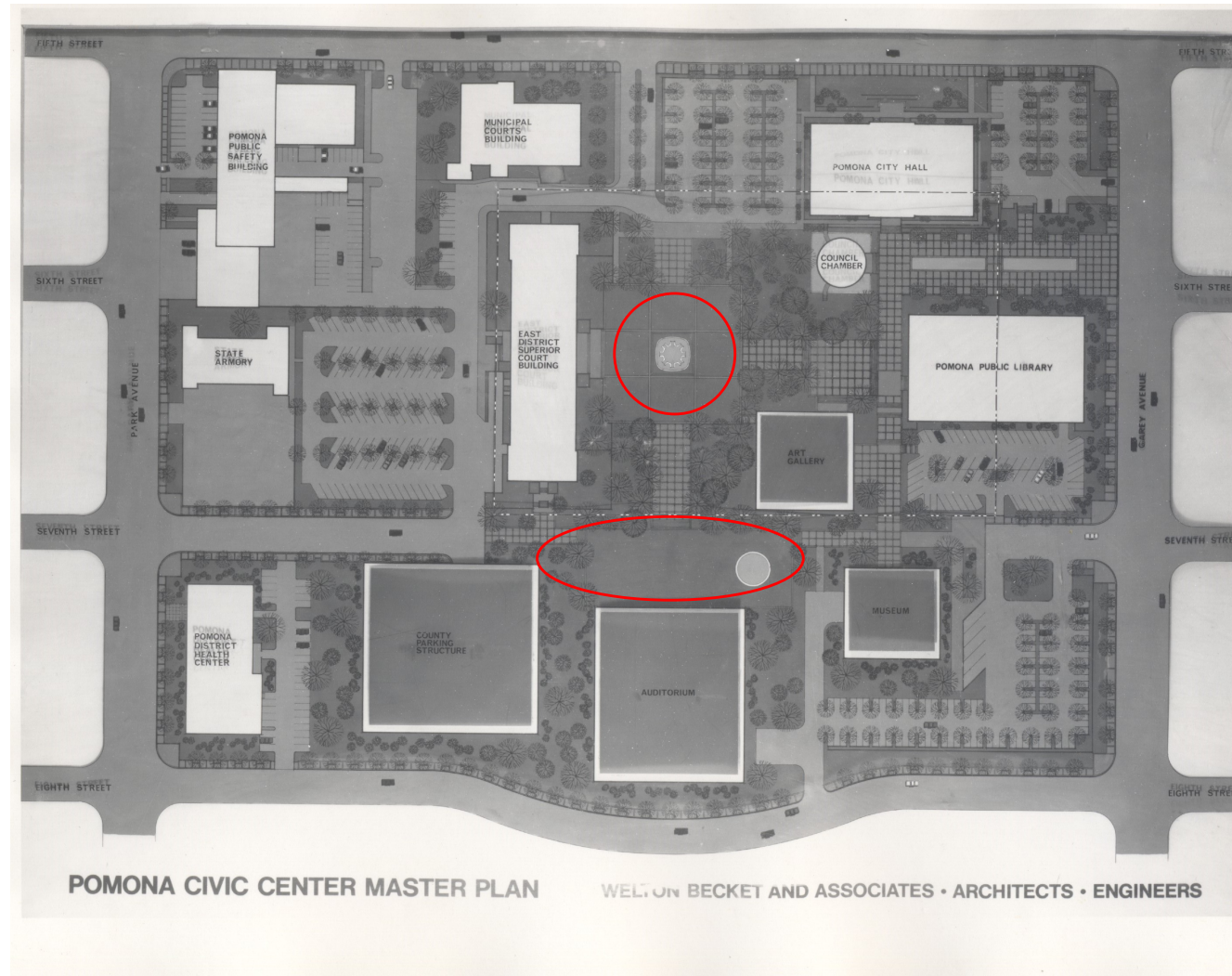
- Original City Hall was designed to support 10,000 residents.
- Started looking for new location in late 1950s.
- New location created through urban renewal project.
- City Hired Welton Becket and Associates to design the complex.
- Completed in 1969.



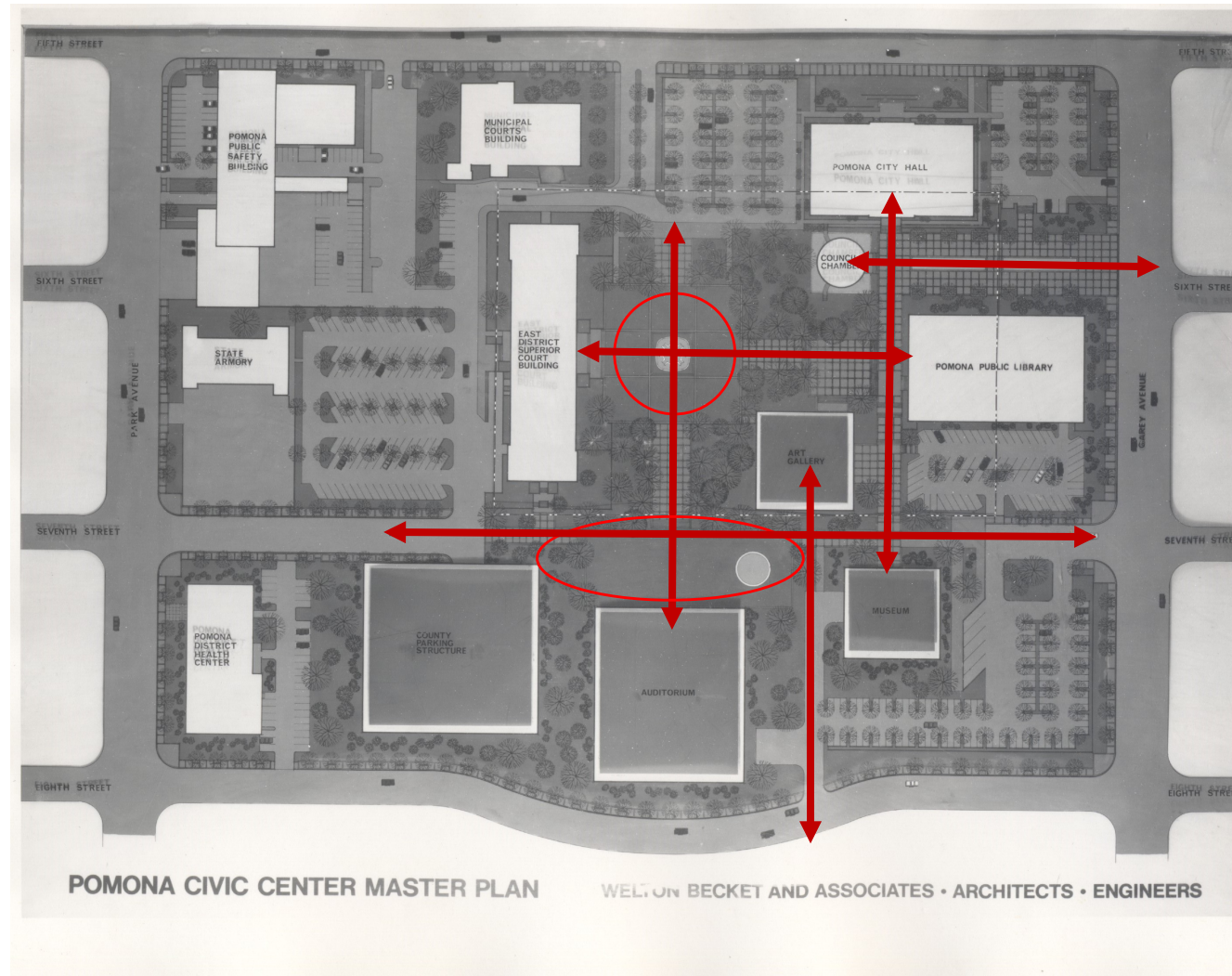
Civic Center Master Plan



Civic Center Master Plan



Civic Center Master Plan



Welton Becket

- One of Los Angeles' preeminent architects.
- Known for his civic and commercial architecture.
- Designed some of Southern California's most iconic buildings





Significance

- The Pomona Civic Center is significant because of its relationship to architect Welton Becket
- Largest collection of Becket's work in the United States.
- It meets local designation criteria 3, 5, and 10.
- Eligible for listing in the National Register of Historic Places under Criterion C: Design/Construction in the area of Architecture and possibly Community Planning and Development for its association with Welton Becket.

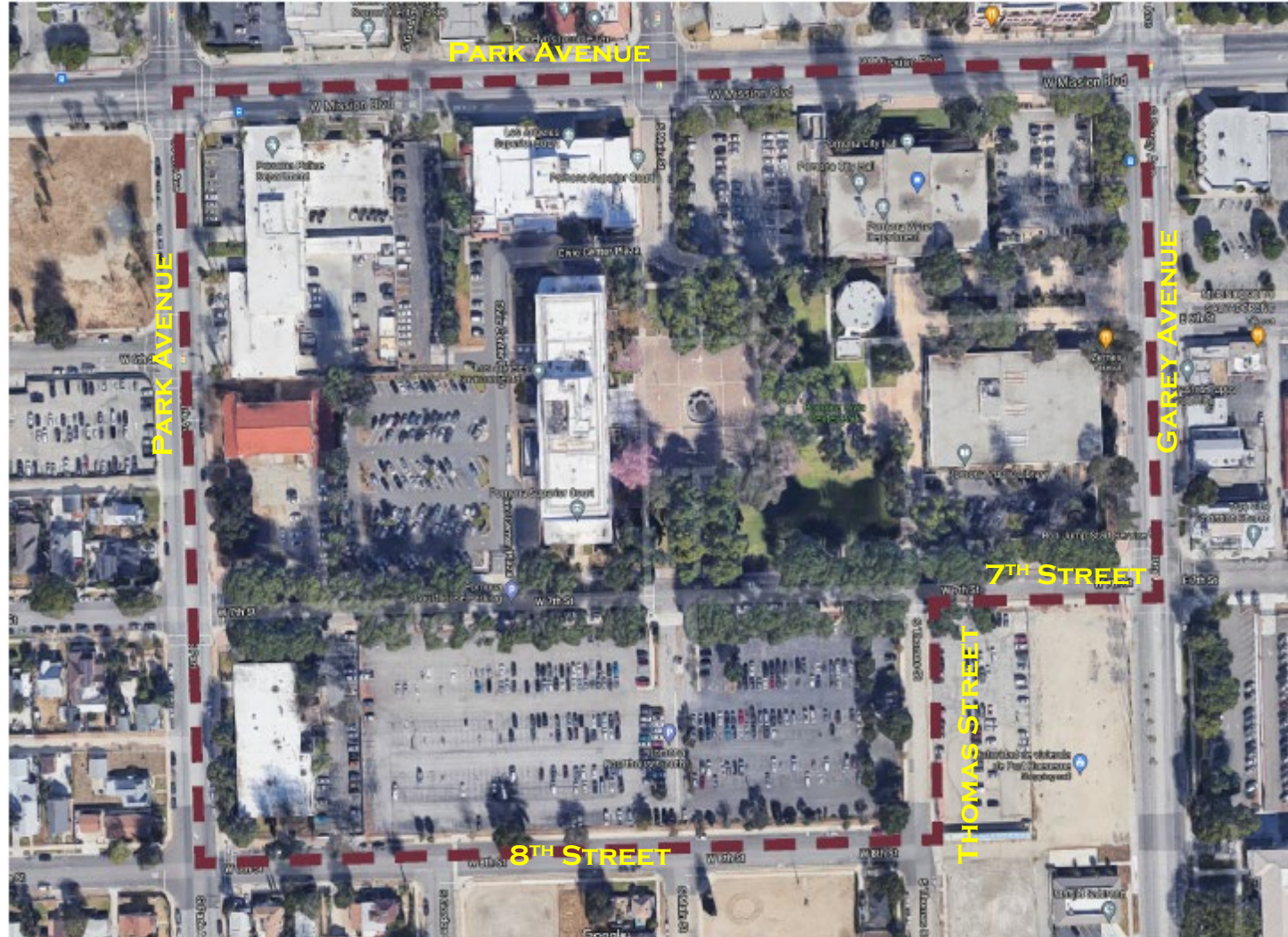


Significance

- Criterion 3: It embodies distinctive characteristics of a style, type, period, or method of construction, or is a valuable example of the use of indigenous materials or craftsmanship;
- Criterion 5: It is the work of a notable builder, designer, landscape designer or architect;
- Criterion 10: It is one of the few remaining examples in the City of Pomona, region, state, or nation possessing distinguishing characteristics of an architectural or historical type or specimen.



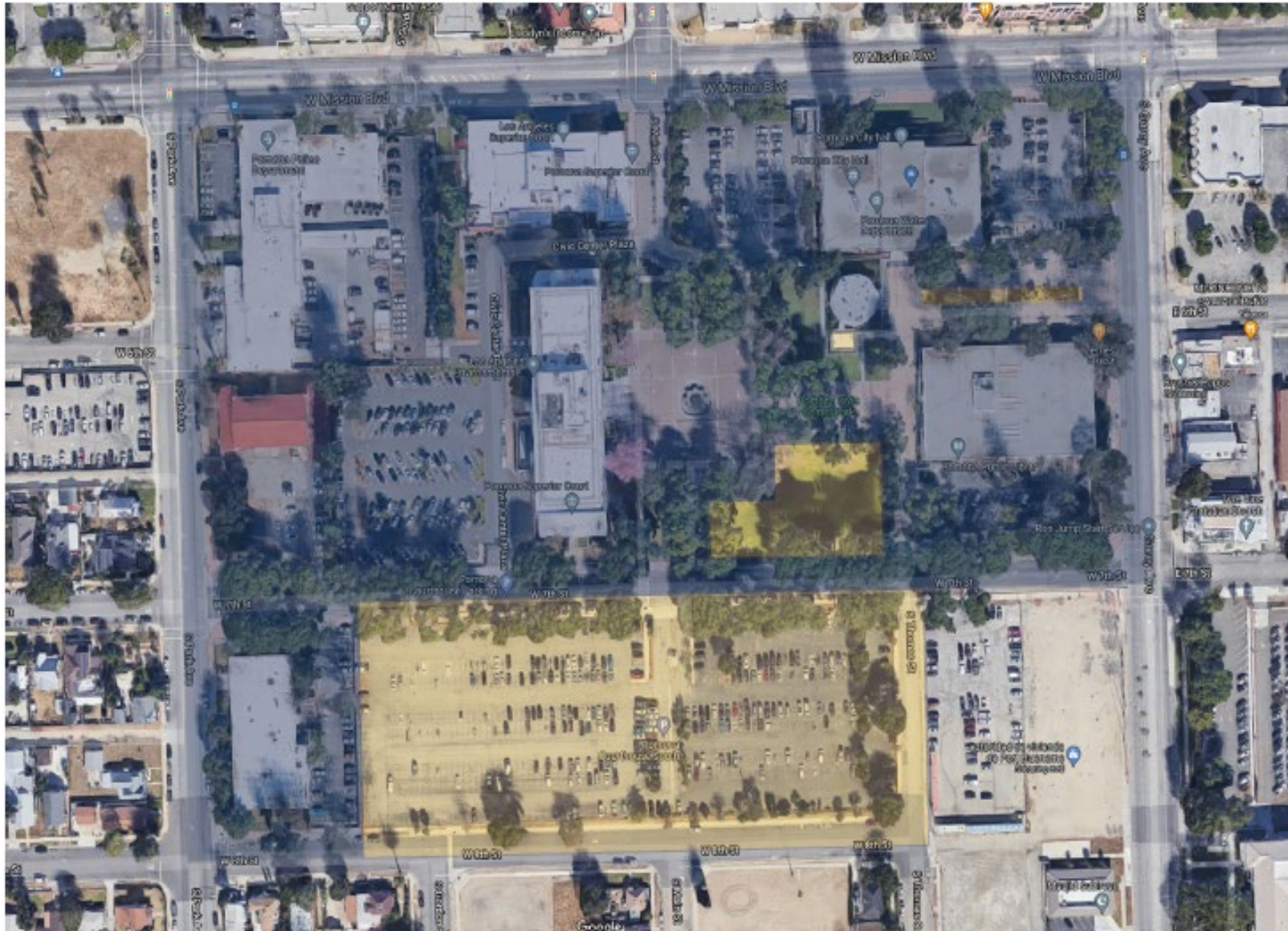
District Boundaries



Contributing Resources

- 10 Contributing Resources
- 8 Buildings
- 2 landscape features

Contributing Resources



Pomona City Hall



Pomona City Council Chambers



Pomona City Library



Superior Courts Building



Pomona Public Safety Building



Municipal Courts Building



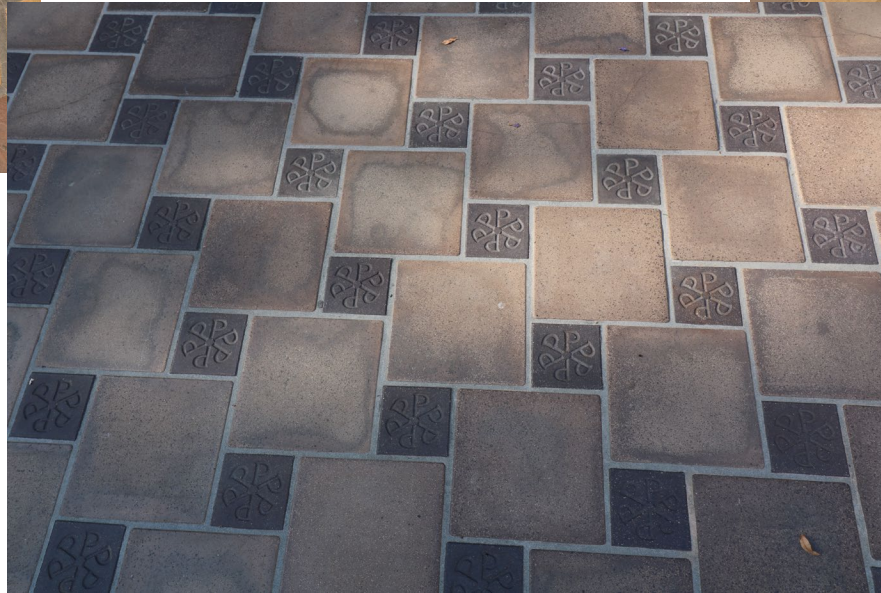
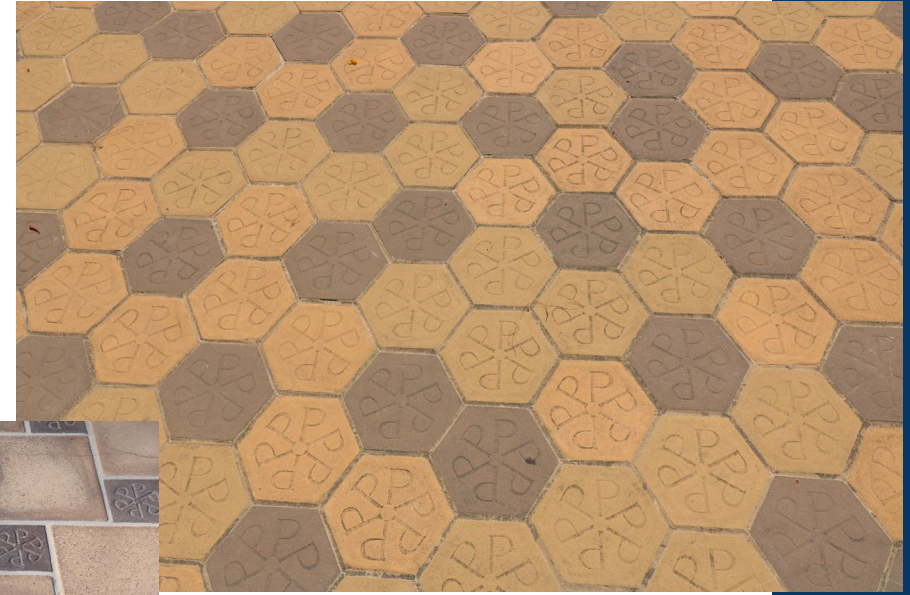
State Armory Building



Pomona District Health Center



Plazas



Planters/Seating Areas



Plaza Fountain



Non-Contributing Resources

- Parking Lots South of 7th Street
- Incomplete areas
- New Structures

South Lawn



Chambers Annex Building



Reflecting Pools



Recommendation

- Approve the designation of the Pomona Civic Center as a Local Historic District.

