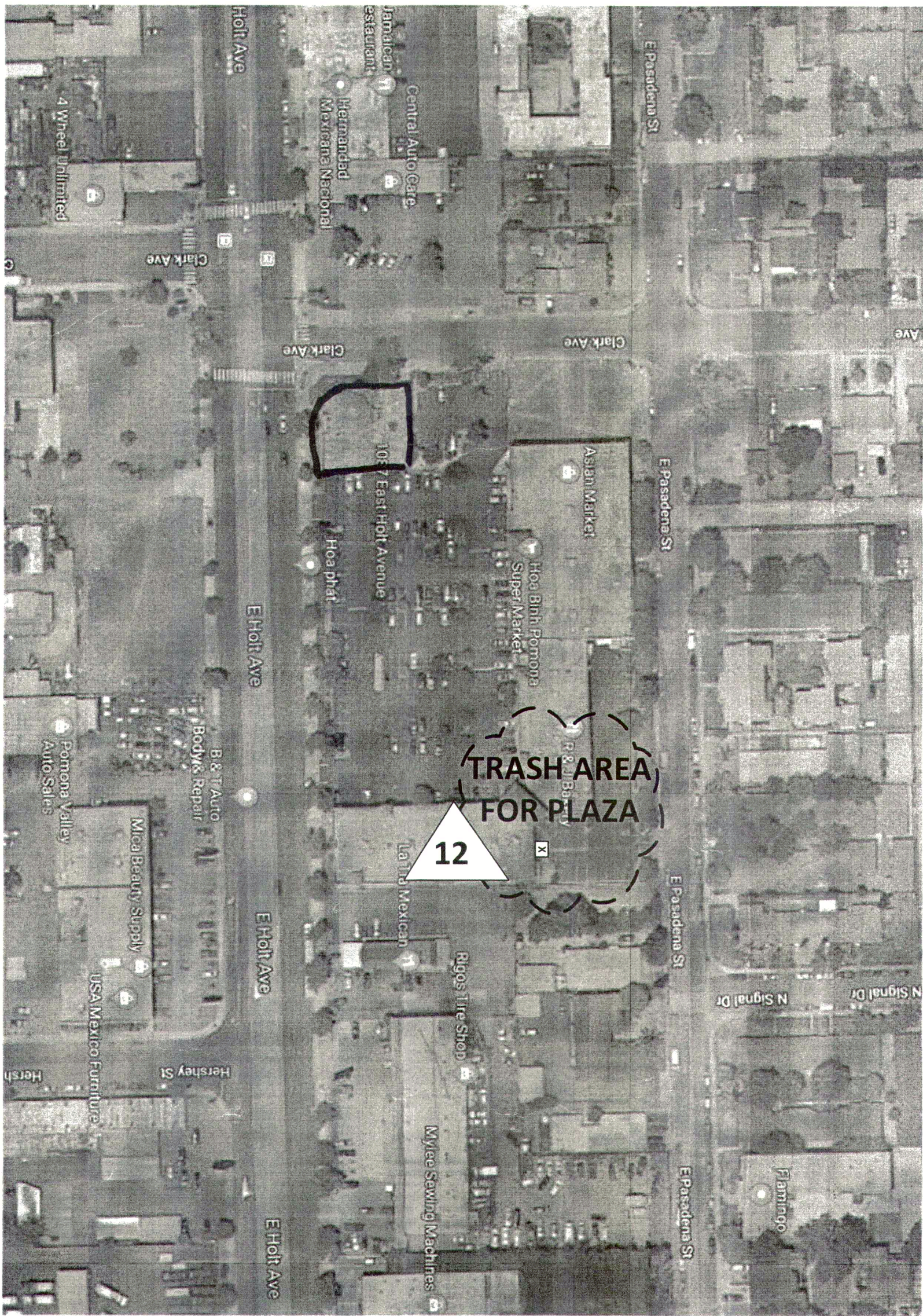
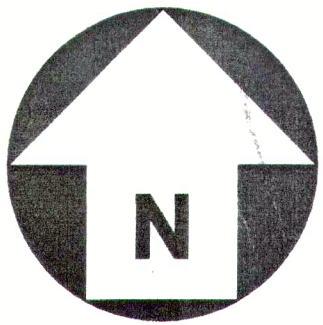


GENERAL NOTES:

1. APPLICABLE CODES:  
2019 CALIFORNIA BUILDING CODE (CBC),  
2019 CALIFORNIA PLUMBING CODE (CPC).
2. PLUMBING CONTRACTOR TO CONTACT DigAlert811, or USA UNDERGROUND SERVICES AGENCY (800)422-4133. AT LEAST 48 HOURS PRIOR TO DIGGING.
3. INSTALL SOIL AND WASTE DRAINAGE PIPING AT 2 PERCENT DOWNWARD IN DIRECTION OF FLOW, UNLESS OTHERWISE INDICATED.
4. DO NOT ENCLOSE, COVER, OR PUT PIPING INTO OPERATION UNTIL IT IS INSPECTED AND APPROVED BY AUTHORITIES HAVING JURISDICTION.
5. INSTALL PLUMBING FIXTURES, TRIM, FITTINGS AND OTHER COMPONENTS ACCORDING TO MANUFACTURER'S WRITTEN INSTRUCTIONS.

SCOPE OF WORK:

New owners to remove and update Equipment for New Restaurant. Existing Fixture to stay. Install NEW 750 Gallons Grease Interceptor to existing Kitchen area lines prior to public sewage.  
Remove one (1) toilet in the Woman's Bathroom to comply with American Disability Act (ADA) Requirements.



TENANT IMPROVEMENT

LEOKEY CONSTRUCTION, INC.

LIC: 889726 BILL CHOW (6262)833-2188

19745 COLIMA RD. STE 128

ROWLAND HEIGHTS, CA 91748

TENANT IMPROVEMENT

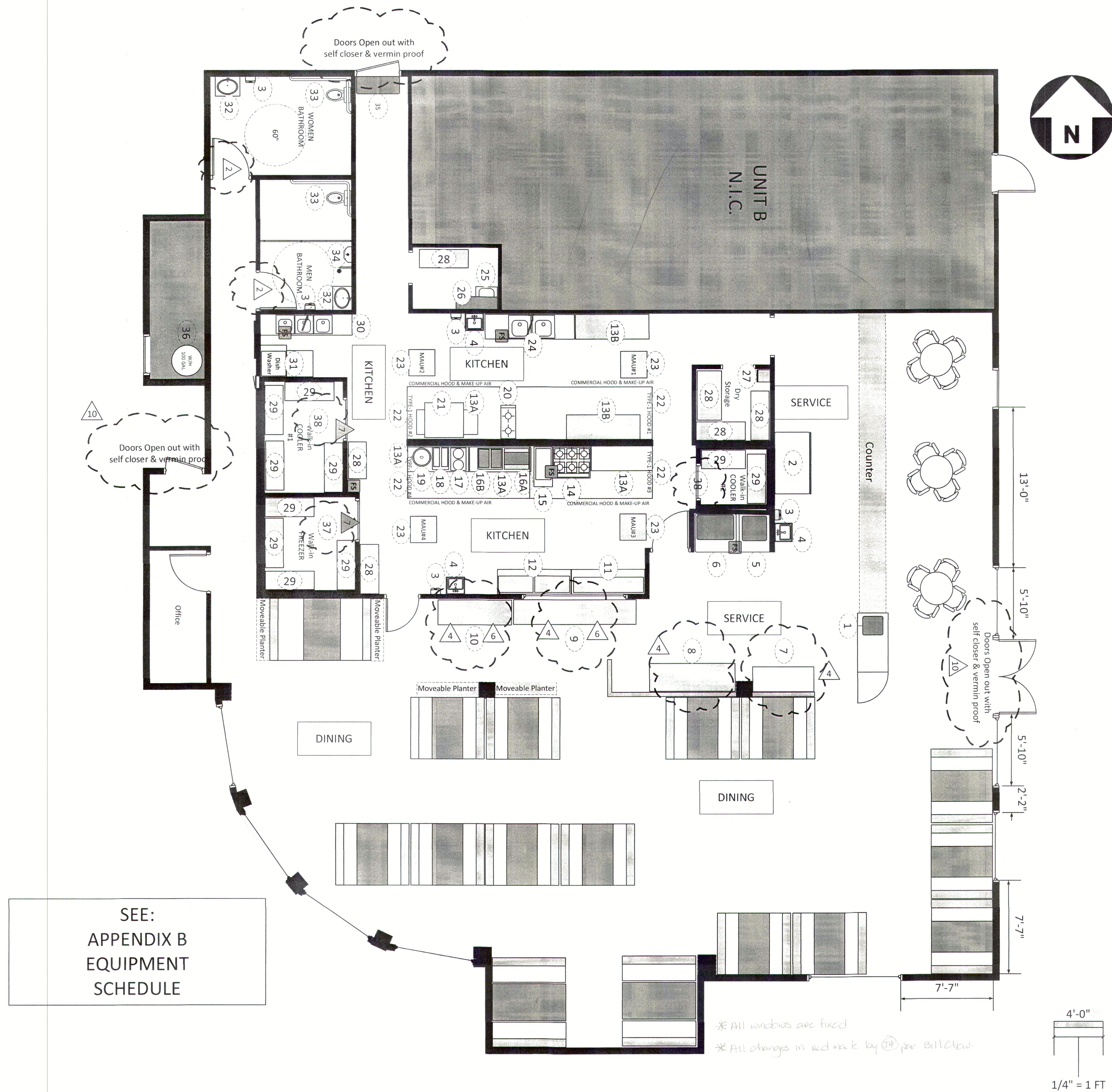
DAVID PEREZ (714)876-7307

1087 E. HOLT AVE UNIT A

POMONA, CA 91767

A1.0 -  
SITE  
PLAN





TENANT IMPROVEMENT  
 DAVID PEREZ (714)876-7307  
 1087 E. HOLT AVE UNIT A  
 POMONA, CA 91767

TENANT IMPROVEMENT  
 LEOKEY CONSTRUCTION, INC.  
 LIC: 889726 BILL CHOW (6262)833-2188  
 19745 COLIMA RD. STE 128  
 ROWLAND HEIGHTS, CA 91748

A2.0 -  
 FLOOR  
 PLAN

SP-0225182 - Restaurant

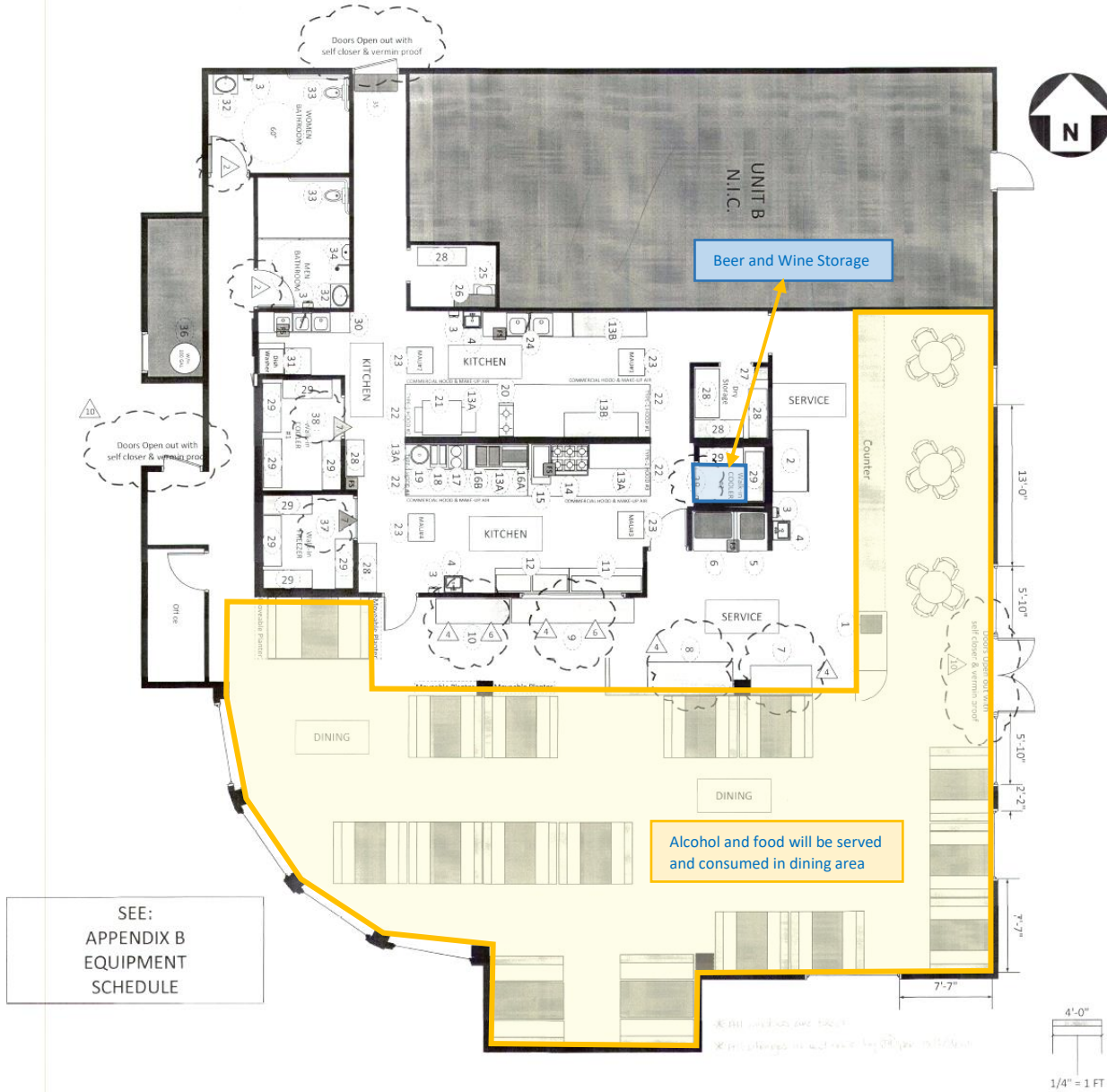
PROVIDED 7/14/2020

LOS ANGELES COUNTY DEPARTMENT OF PUBLIC HEALTH  
 PLAN CHECK PROGRAM  
 5050 COMMERCE DRIVE  
 BALDWIN PARK, CA 91708  
 626-430-5500

LOS ANGELES COUNTY DEPARTMENT OF PUBLIC HEALTH  
 PLAN CHECK PROGRAM  
 5050 COMMERCE DRIVE  
 BALDWIN PARK, CA 91708  
 626-430-5500

ANY CHANGES TO APPROVED PLAN  
 MUST BE NOTED TO YOUR PLAN  
 CHECKERS ATTENTION





TENANT IMPROVEMENT  
DAVID PEREZ (714)876-7307  
1087 E. HOLT AVE UNIT A  
POMONA, CA 91767

TENANT IMPROVEMENT  
LEOKEY CONSTRUCTION, INC.  
LIC: 889726 BILL CHOW (626)833-2188  
19745 COLIMA RD. STE 128  
ROWLAND HEIGHTS, CA 91748

A2.0 -  
FLOOR  
PLAN

APPROVED FOR SUBMITTAL TO THE CITY OF POMONA  
DATE: 08/15/2018  
BY: [Signature]  
LDS ANDREWS COUNTY  
DEPARTMENT OF PUBLIC HEALTH  
PLAN CHECK PROGRAM  
AND COURTESY OF  
BALDWIN PARK, CA 91706  
626-833-2188



ITEM		QTY	MANUFACTURER		PLUMBING				GAS	
#	DESCRIPTION		MODEL NUMBER	NSF	HW	CW	DIR	FS	(BTU)	COMMENT
1	CASH REGISTER	1	TEC MA1595							UL LISTED
2	SLIDE DOOR REFRIGERATOR	1	TRUE GDM-47	X						SELF CONTAINED
3	PAPER TOWEL DISPENSER	5	SAN JAMAR T950							WALL MOUNTED
4	HAND SINK	3	Eagle HAS10FTWS-LRS	X	X	X	X			W/12" SPLASHGUARDS
5A	ICE DRINK DISPENSER	1	ENDURO-200	X				X		BEVERAGE DISPENSER
5B	DROP-IN STAND	1	Manitowoc 16-1576-A	X				X		DRAIN TO FLOOR SINK
6	ICE MAKER	1	Hoshizaki KM-515MWH	X		X		X		DRAIN TO FLOOR SINK
7	WIRE SHELVING	1	EAGLE P74C-2460C	X						6" LEGS, 5 Tiers
4	8	STAINLESS STEEL TABLE	1	EAGLE T2484B	X					W/ 6" LEGS 24" X 84"
4/6	9	STAINLESS STEEL TABLE	1	EAGLE T24120B	X					W/ 6" LEGS 24" X 120"
4/6	10	STAINLESS STEEL TABLE	1	EAGLE T2472B	X					W/ 6" LEGS 24" X 72"
	11	SANDWICH PREP TABLE	1	TURBO AIR MST-72N	X					SELF CONTAINED
	12	FOOD PREP TABLE	1	TURBO AIR MST-72-30	X					SELF CONTAINED
5	13A	STAINLESS STEEL TABLE	3	2 SHELVES	X					24"X60" W/6" LEGS
4	13B	STAINLESS STEEL TABLE	2	2 SHELVES W/BACK SPLASH	X					24"X96" W/6" LEGS
	14	6 BURNERS COMMERCIAL RANGE	1	IMPERIAL IR-6	X				227,000	W/ 6" LEGS
	15	DEEP FRYER	1	FRYMASTER	X				80,000	W/ 6" LEGS
	16A	HEAVY DUTY GRIDDLES	1	AEMG-24					60,000	AmericanRange
	16B	HEAVY DUTY RADIANT BROILER	1	AECB-24	X				70,000	AmericanRange
	17	ELECTRIC FOOD WARMER	1	WINCO FWS500	X					110V UL-LISTED
5	18	SPLIT LID GRILL (PROLUXE SL1577)	1	DOUGHPRO SL1577	X					120V Panini Grill
	19	RICE COOKER	1	RINAI RER-55AS	X				35,000	RICE COOKER
	20	STOCK DUAL BURNERS	2	American Range SP18-2	X				180,000	Stock Pot Stoves
	21	CONVECTION OVEN	1	Imperial ICVD-1	X				80,000	38"w x 45"d, 120V
	22	TYPE-1 COMMERCIAL HOODS	4	SUPERIOR VSSD48-10	X					Elec Interlock w/MAU
	23	MAKE UP AIR	4	FRIGKING FS450A						Elec Interlock w/HOOD
	24	2-COMP PREP SINK	1	GSW SE18182D	X	X	X		X	DRAIN TO FLOOR SINK
	25	MOP SINK W/ HOSE BIB	1	GSW SEE18181P	X	X	X	X		Faucet w/Hose Bib
	26A	CHEMICAL SHELVES	1	STAINLESS STEEL						WALL MOUNTED
	26B	MOP & BROOM HANGER	1	HANG ABOVE FLOOR						WALL MOUNTED
	27	EMPLOYEES LOCKER	1	WIN-HOLT WL-66	X					6 EMPLOYEES LOCKERS
8	28	WIRE SHELVING	10	EAGLE P74C-1848C	X					6" LEGS, 5 Tiers
	29	GREEN EPOXY WIRE SHELVING	10	EAGLE P74VG-1848VG	X					6" LEGS, 5 Tiers
	30	3-COMP SINKS W/SPRAYER	1	GSW SE18183D	X	X	X		X	(2) 18" DRAIN BOARDS
	31	COMMERCIAL DISHWASHER	1	CMA-C2	X	X			X	DRAIN TO FLOOR SINK
	32	DROP-IN CERAMIC	2	BATHROOM SINK		X	X	X		
	33	TOILET	2	OVAL TOILET			X	X		MEN/WOMEN BTHRM
	34	URINAL	1	WALL MOUNT			X	X		MEN'S BATHROOM
	35	DOOR ACTIVATED AIR CURTAIN	1	MARS LPV-48-1U	X					DOOR ACTIVATED
	36	COMMERCIAL GAS WATER HEATER	1	AO-SMITH BTR250-118	X	X	X		250,000	UL LISTED
7/9	37	WALK-IN FREEZER	1	BOHN	X				X	UL LISTED, NSF
7/9	38	WALK-IN COOLER	2	BOHN	X				X	UL LISTED, NSF

1 USG CEILING TILE (KITCHEN)

KIT KITCHEN CEILING TILES

WASHABLE

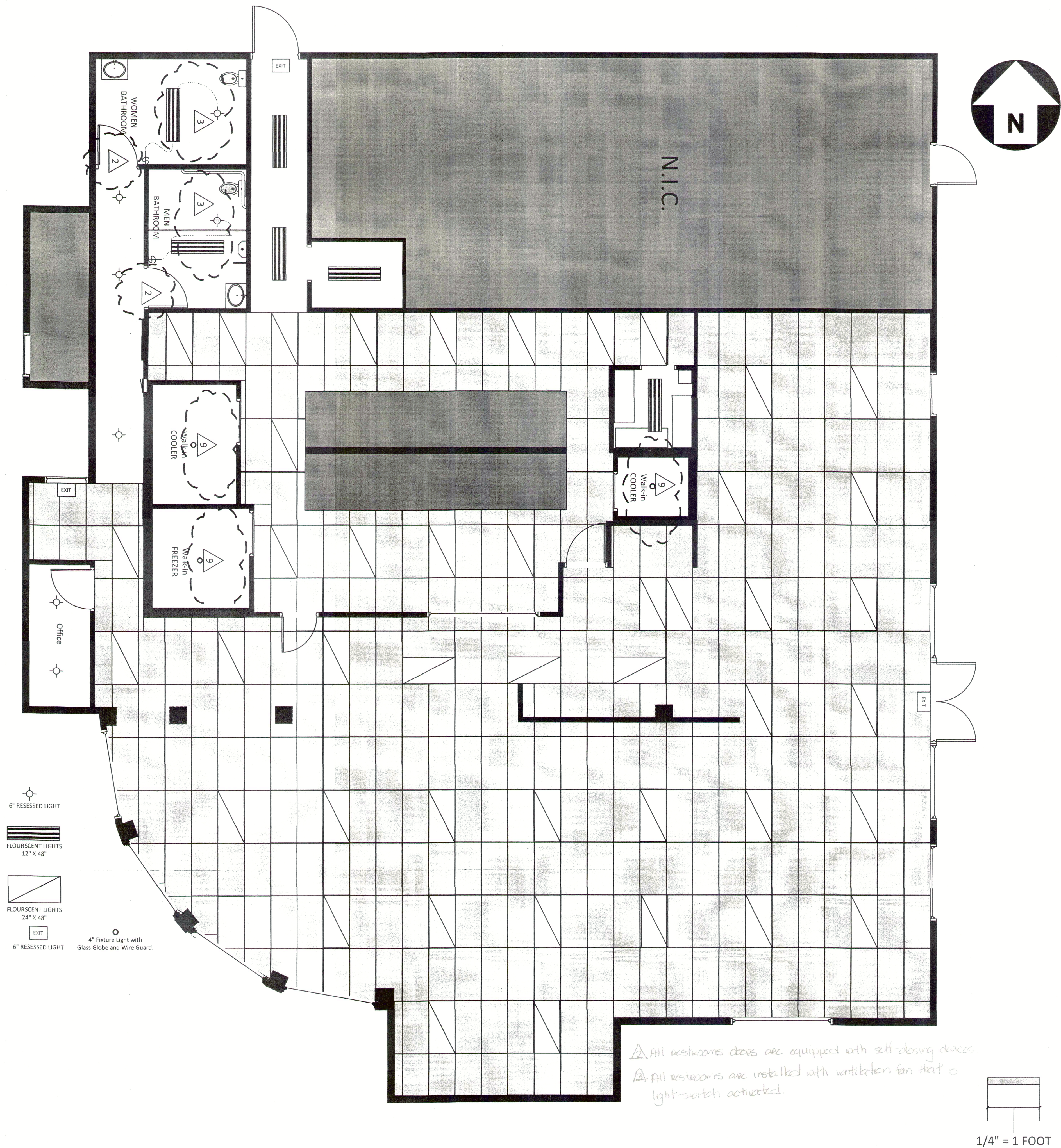


DANA GOURMET CAFÉ  
1087 E. HOLT AVE.  
POMONA, CA 91767

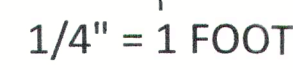
APPENDIX C  
FINISH SCHEDULE

ROOM NAME	FLOOR	COVE BASE 3/8" RADIUS	WALLS	CEILING
DINNING	TERRACOTTA TILES 12"X12"	4" BASEBOARD SEMI GLOSS PAINT WHITE	PAINT - LIGHT COLORED YELLOW ENG. WOOD PANEL 4' A.F.F.	DROP CEILING; VINYL FACED SMOOTH WHITE
SERVICE	QUARRY TILES 6"X6"	4" CERAMIC TILES WHITE COVE BASE	STAINLESS STEEL	DROP CEILING; VINYL FACED SMOOTH WHITE
KITCHEN	QUARRY TILES 6"X6"	4"X6" QUARRY TILES COVEBASE	STAINLESS STEEL	USG CEILING PANEL NONFISSURED; WHITE
WALK-IN COOLER	PREFABRICATED SMOOTH S/S FLOOR	6" S/S COVE BASE	SMOOTH S/S WALL	SMOOTH S/S CEILING
WALK-IN FREEZER	PREFABRICATED SMOOTH S/S FLOOR	6" S/S COVE BASE	SMOOTH S/S WALL	SMOOTH S/S CEILING
RESTROOM	12"X12" CERAMIC TILES	4" SMOOTH CERAMIC TILE 3/8" COVE BASED	12"X12" CERAMIC TILE LIGHT COLORED (70% LIGHT REFLECTIVE VALUE)	DROP CEILING





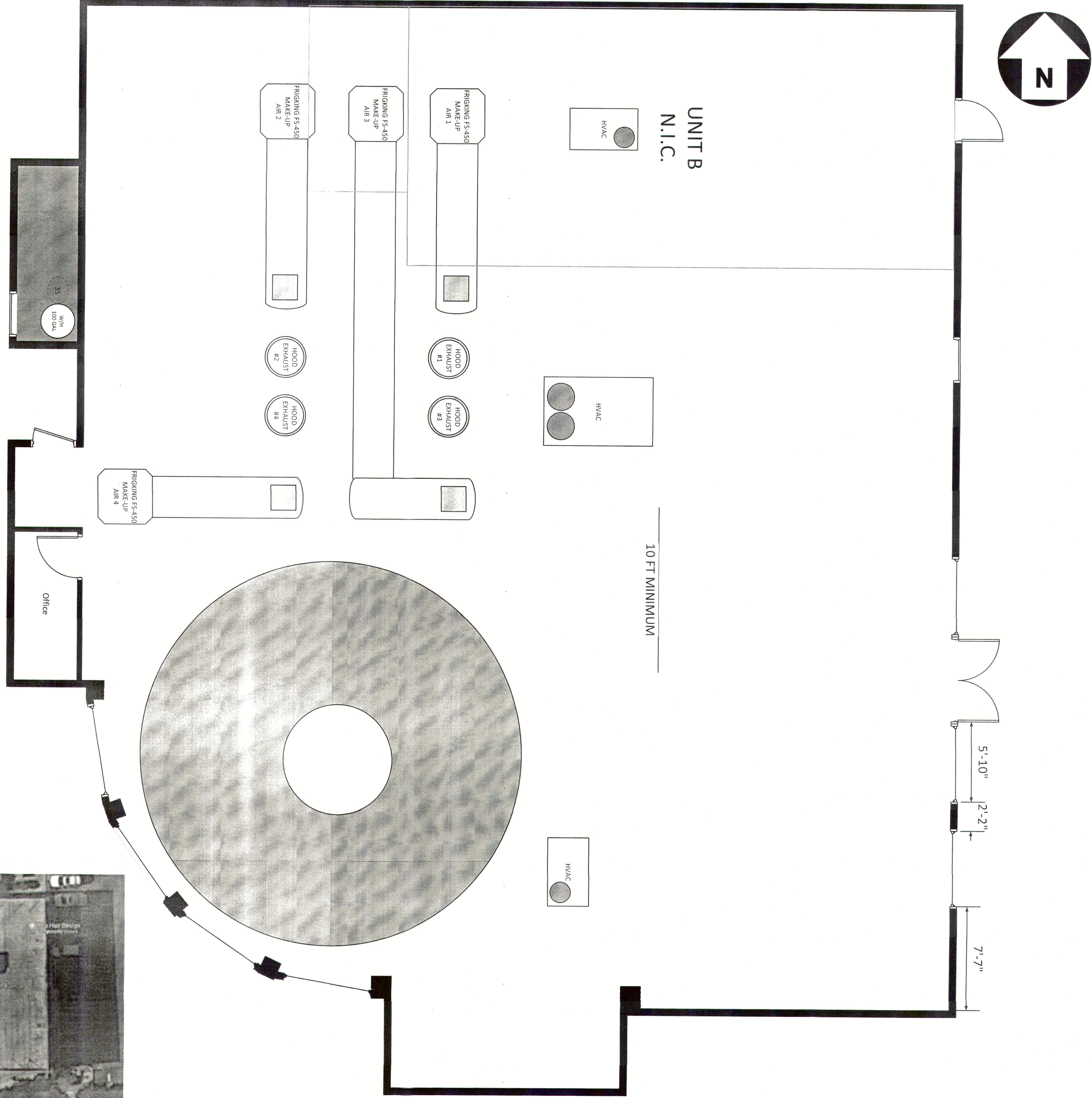
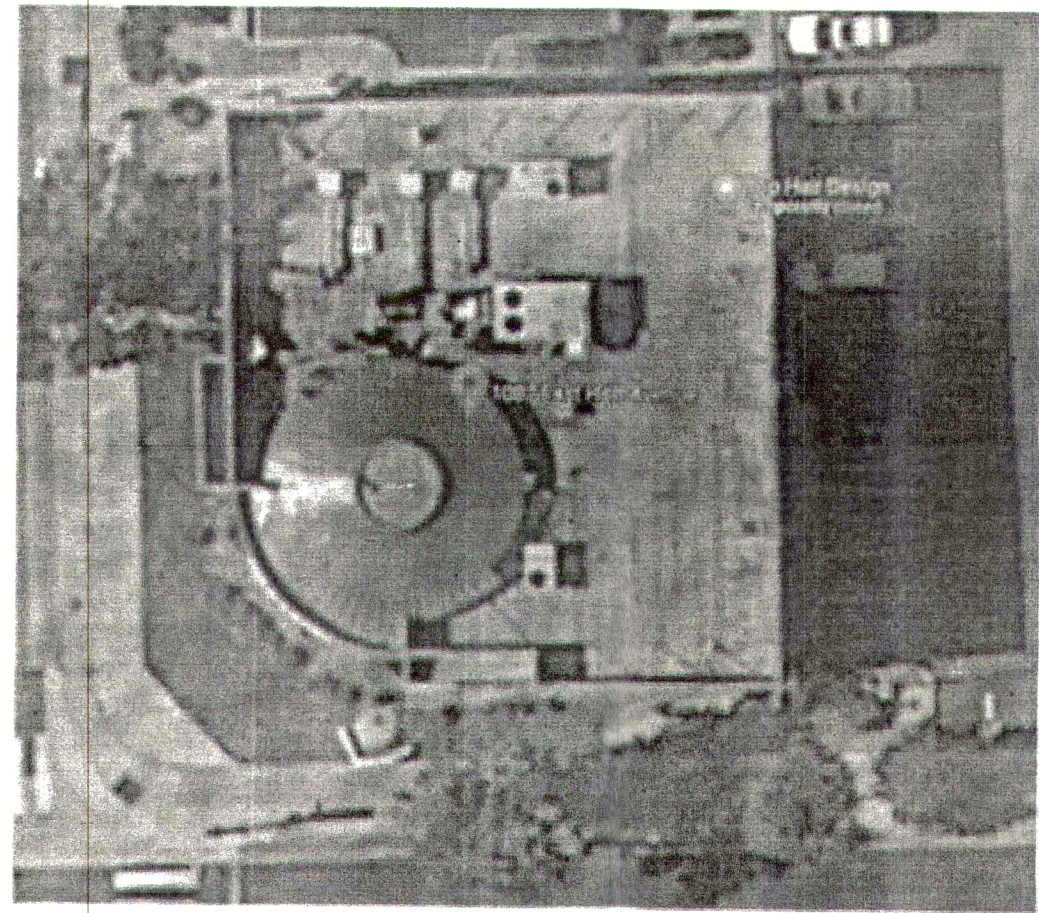




TENANT IMPROVEMENT  
DAVID PEREZ (714)876-7307  
1087 E. HOLT AVE UNIT A  
POMONA, CA 91767

P1 -  
PLUMBING





TENANT IMPROVEMENT  
DANA GOURMET CAFE  
1087 E. HOLT AVE UNIT A  
POMONA, CA 91767

ROOF  
PLAN

TENANT IMPROVEMENT  
DAVID PEREZ (714)876-7307  
1087 E. HOLT AVE UNIT A  
POMONA, CA 91767